



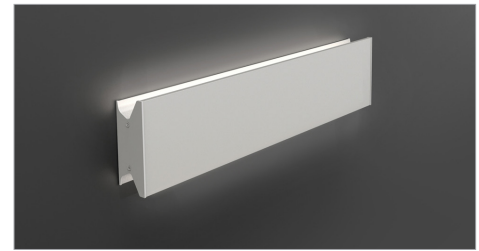
Project:	Type:
Notes:	

LINEAFLAT wall/ceiling

design Artemide North America

#CAT	LENGTH	EMISSION	CRI	CCT	DRIVER	FINISH
USC-RDLF						

QUANTITY



Length	M = mini 1 = 12in 2 = 24in 3 = 36in
Emission	D = mono (1 side illuminated) B = dual (2 side illuminated)
CRI	8 = 80 CRI+ 9 = 90 CRI+
CCT	30 = 3000k 35 = 3500k
Driver	06 = Phase Dimming 2-wire 120V* (also on/off 277V) 08 = 0-10V Dimming 120V-277V
Finish	AN = textured Anthracite powder coat W = textured White powder coat

*Compatible with most forward or reverse phase dimmers.

TECHNICAL DATA : (80CRI 3500K model rating)

	mini	1	2	3
Dual				
Input Powder	12.2 W	19.6 W	41.8 W	58.8 W
Lumen Output	516 lm	874 lm	1835 lm	2560 lm
Efficacy	42.4 lm/W	44.6 lm/W	43.8 lm/W	43.5 lm/W
Mono				
Input Powder	6.1 W	9.8 W	20.9 W	29.4 W
Lumen Output	258 lm	437 lm	917 lm	1280 lm
Efficacy	42.4 lm/W	44.6 lm/W	43.8 lm/W	43.5 lm/W

FEATURES:

Construction : Body in extruded aluminum with textured powder coat finish. End caps in aluminum same color as the body. Extrusion covers junction box dimension. 'Pig-tail' option on backplate available on 1, 2 and 3 feet only.

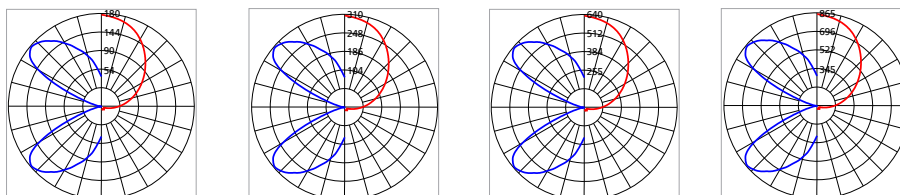
Note : For other finishes, please contact your local Artemide sales representative.

Weight

- mini - 2lbs (0.9kg)
- 1 - 3lbs (1.3kg)
- 2 - 6lbs (2.7kg)
- 3 - 8lbs (3.6kg)

Labels : us - suitable for damp locations ADA
Class : IP20

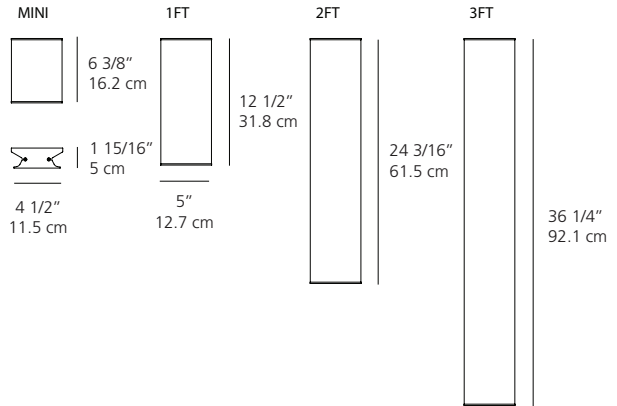
PHOTOMETRIC DATA:



Max Candela linea mini 130° vertical = 178 180° horizontal = 178	Max Candela linea 1ft 132.5° vertical = 306 180° horizontal = 306	Max Candela linea 2ft 135° vertical = 638 180° horizontal = 638	Max Candela linea 3ft 132.5° vertical = 865 180° horizontal = 865
--	---	---	---

Date : 03/11/17
Rev.04

We reserve the right to change specifications of our products (designs, materials and finishes).
For the latest product information, please contact : USA : 631-694-9292, Canada : 514-323-6537 or at www.artemide.net
2017 © Artemide | All rights reserved



Project Name	
Floorplan Ref. Type	
Quantity	
Notes	
Date	
Signature & Stamp	