

ALGORITMO LED SUSPENSION STANDALONE

MODULE

Design Carlotta de Bevilacqua, Paola di Arianello

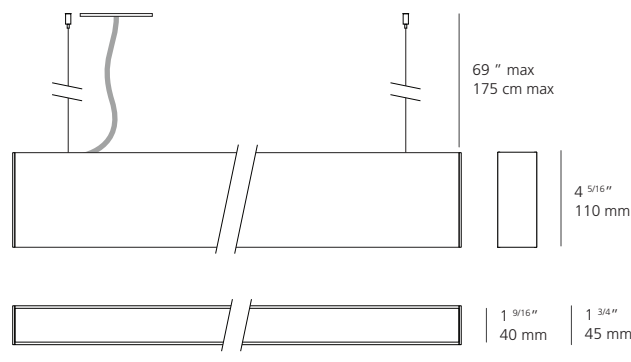
CODE

#CAT	MOUNTING	LENGTH	EMISSION	CRI	CCT	OPTICS	DRIVER	COLOR	QUANTITY
USC-MAL	KS	—	—	8	—	—	08	—	



Mounting	KS = Suspension Standalone
Length	4 = 4 Feet 8 = 8 Feet
Emission	D = Direct B = Direct + Indirect*
CRI	8 = 80 CRI min
CCT	30 = 3000K 35 = 3500K
Optics	C = Controlled Emission D = Diffused P = Prismatic
Driver	08 = On/Off + 0-10V dim (120/277V)
Color	B = Black S = Silver W = White

*Optics not selectable for Indirect portion; comes in clear frosted



4FT	8FT
46 3/4"	93 3/8"
1188 mm	2372 mm

TECHNICAL DATA: (80 CRI 3000K model ratings)

Construction: Structural body in extruded aluminum with color-matched end caps, finished in powder coat paint. Internal gear plate with LED driver and array modules mounted on an independent heatsink for better heat dissipation. Clip-in polycarbonate optics for a controlled beam.

Mounting: Mounts to ceiling via included steel suspension cables (hardware not included). Clear electrical cord, white junction box canopy provided.

Notes: For all other finishes, LED CCT, lengths and custom requests, please contact your local Artemide sales representative.

Label: - suitable for dry locations

ALGORITMO STANDALONE 80CRI 3000K												
	4FT DIRECT EMISSION			4FT DIRECT+INDIRECT EMISSION			8FT DIRECT EMISSION			8FT DIRECT+INDIRECT EMISSION		
Input Power:	34W			62W			68W			122W		
Input Current:	120VAC	277VAC		120VAC	277VAC		120VAC	277VAC		120VAC	277VAC	
	0.28A	0.12A		0.52A	0.22A		0.57A	0.25A		1.02A	0.44A	
Nominal Lumen:	4480lm			7840lm			8960lm			17,360lm		
Delivered Lumen:	Controlled	Diffused	Prismatic	Controlled	Diffused	Prismatic	Controlled	Diffused	Prismatic	Controlled	Diffused	Prismatic
	1568.6lm	1960.7lm	2527.1lm	4044.2lm	4436.3lm	5002.7lm	3137.2lm	3921.4lm	5054.2lm	8088.4lm	8872.6lm	10,005.5lm
Efficacy (lm/W):	46.1lm/W	57.7lm/W	74.3lm/W	65.2lm/W	71.6lm/W	80.7lm/W	46.1lm/W	57.7lm/W	74.3lm/W	66.3lm/W	72.7lm/W	82.0lm/W
Efficiency (%):	35.0%	43.8%	56.4%	51.6%	56.6%	63.8%	35.0%	43.8%	56.4%	46.6%	51.1%	57.6%

See following page for optics specifications and description.

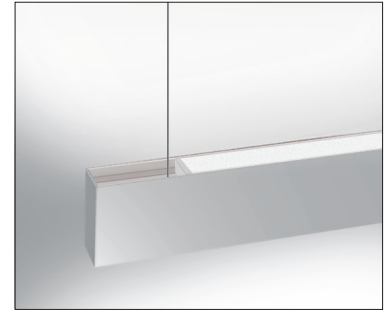
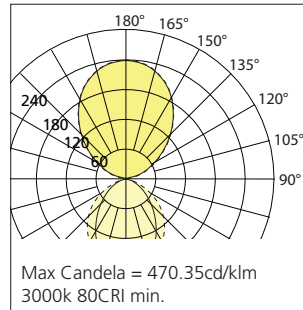
ALGORITMO LED SUSPENSION STANDALONE

Design Carlotta de Bevilacqua, Paola di Arianello

LINEAR OPTICS

INDIRECT OPTICS (DIRECT + INDIRECT MODELS ONLY)

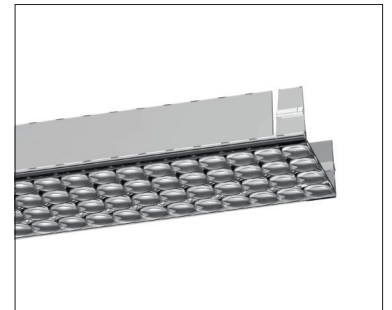
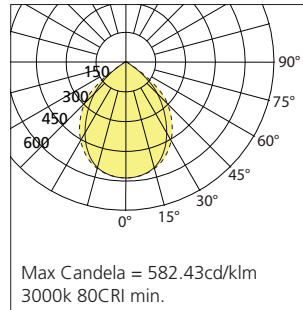
Indirect light engine provides illumination above the fixture on Direct+Indirect models ("B" emission), on same circuit. Extruded polycarbonate diffuser with a clear frosted finish for maximum light output. 80CRI+ LED chips, 3-step MacAdam ellipse.



DIRECT OPTICS (SELECTABLE)

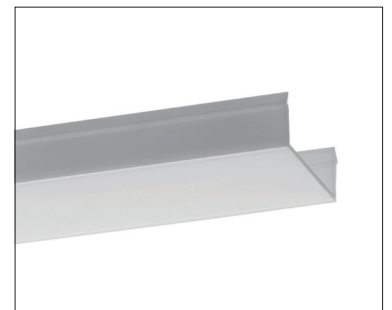
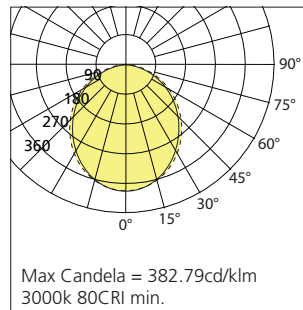
CONTROLLED EMISSION OPTICS

Injection-molded polycarbonate snap-in diffuser, with precise optical lens array for glare and emission control. Provides a narrower beam.



DIFFUSED OPTICS

Extruded polycarbonate snap-in diffuser, opal white color. Prevents LED pixelation with its soft uniform glow.



PRISMOPTIC LENS OPTICS

Extruded polycarbonate snap-in diffuser, with light-guiding grid. Controls glare by altering the angle of incidence of the ray, therefore minimizing output loss.

