

ALGORITMO LED SURFACE STANDALONE

Design Carlotta de Bevilacqua, Paola di Arianello

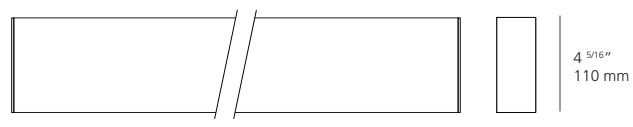
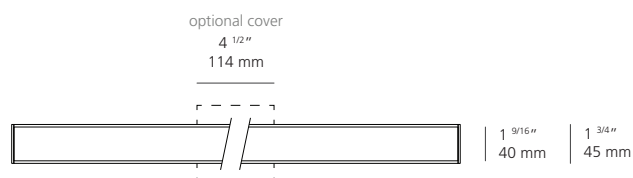
MODULE

CODE

#CAT	MOUNTING	LENGTH	CRI	CCT	OPTICS	DRIVER	COLOR	QUANTITY
USC-MAL	KC	—	8	—	—	08	—	



Mounting	KC = Surface Standalone
Length	4 = 4 Feet 8 = 8 Feet
CRI	8 = 80 CRI min
CCT	30 = 3000K 35 = 3500K
Optics	C = Controlled Emission D = Diffused P = Prismatic
Driver	08 = On/Off + 0-10V dim (120/277V)
Color	B = Black S = Silver W = White



4FT | 8FT
46 3/4" | 93 3/8"
1188 mm | 2372 mm

TECHNICAL DATA: (80 CRI 3000K model ratings)

Construction: Structural body in extruded aluminum with color-matched end caps, finished in powder coat paint. Internal gear plate with LED driver and array modules mounted on an independent heatsink for better heat dissipation. Clip-in polycarbonate optics for a controlled beam (shown on next page).

Mounting: Mounts to wall or ceiling (hardware not included). Color-matched junction box cover provided, but removable in case of armored cable connection (BX pigtail)

Notes: For all other finishes, LED CCT, lengths and custom requests, please contact your local Artemide sales representative.

Label:  - suitable for dry locations

ALGORITMO STANDALONE 80CRI 3000K						
4FT DIRECT EMISSION			8FT DIRECT EMISSION			
Input Power:	34W			68W		
Input Current:	120VAC	277VAC	120VAC	277VAC	120VAC	277VAC
	0.28A	0.12A	0.57A	0.25A	0.57A	0.25A
Nominal Lumen:	4480lm			8960lm		
Delivered Lumen:	Controlled	Diffused	Prismatic	Controlled	Diffused	Prismatic
	1568.6lm	1960.7lm	2527.1lm	3137.2lm	3921.4lm	5054.2lm
Efficacy (lm/W):	46.1lm/W	57.7lm/W	74.3lm/W	46.1lm/W	57.7lm/W	74.3lm/W
Efficiency (%):	35.0%	43.8%	56.4%	35.0%	43.8%	56.4%

See following page for optics specifications and description.

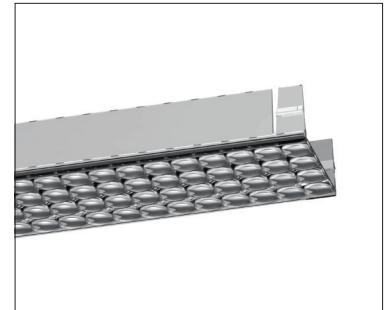
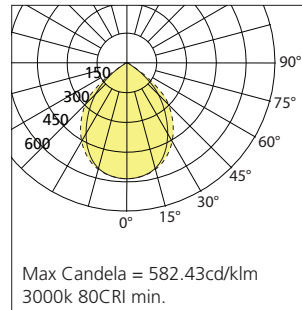
ALGORITMO LED SURFACE STANDALONE

Design Carlotta de Bevilacqua, Paola di Arianello

LINEAR OPTICS

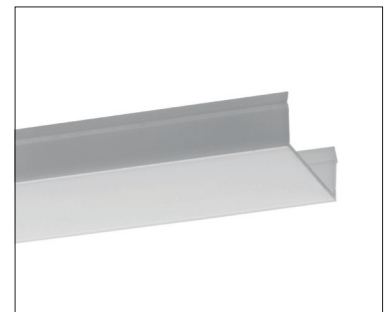
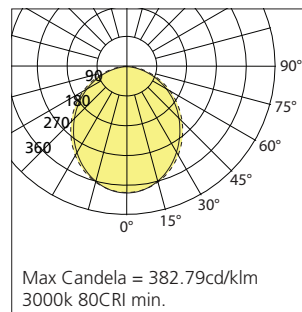
CONTROLLED EMISSION OPTICS

Injection-molded polycarbonate snap-in diffuser, with precise optical lens array for glare and emission control. Provides a narrower beam.



DIFFUSED OPTICS

Extruded polycarbonate snap-in diffuser, opal white color. Prevents LED pixelation with its soft uniform glow.



PRISMOPTIC LENS OPTICS

Extruded polycarbonate snap-in diffuser, with light-guiding grid. Controls glare by altering the angle of incidence of the ray, therefore minimizing output loss.

