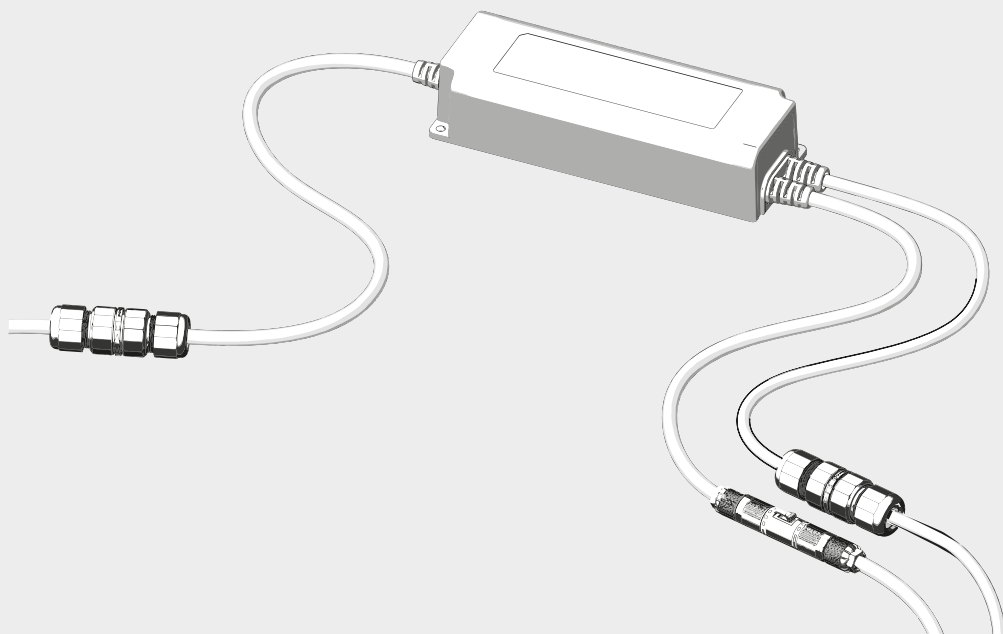
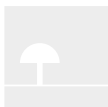


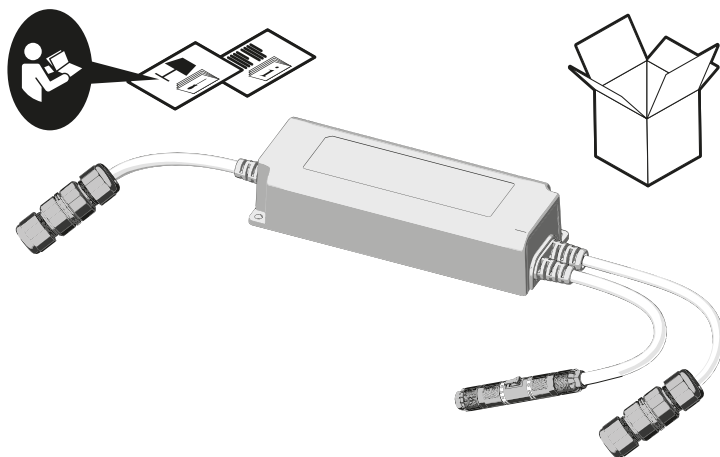
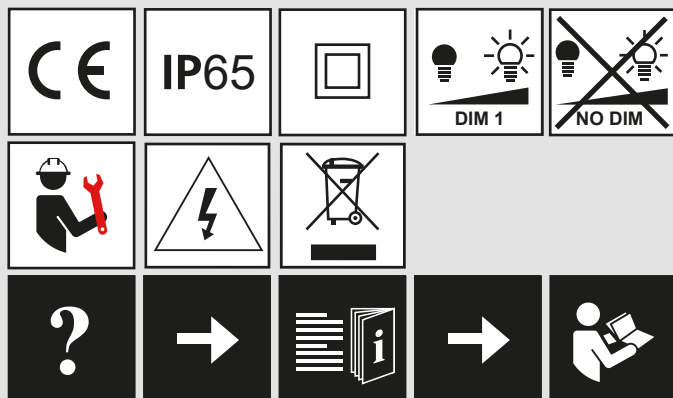
Artemide®

DRIVER 90W CV 110-240VAC 24VDC 0-10V IP65

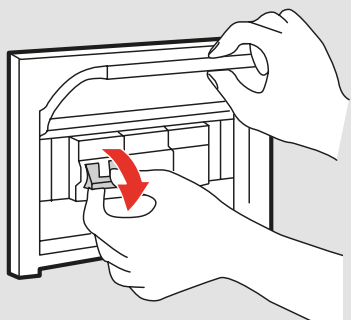




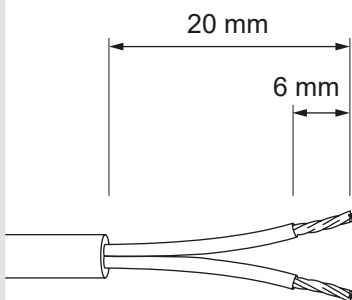
i



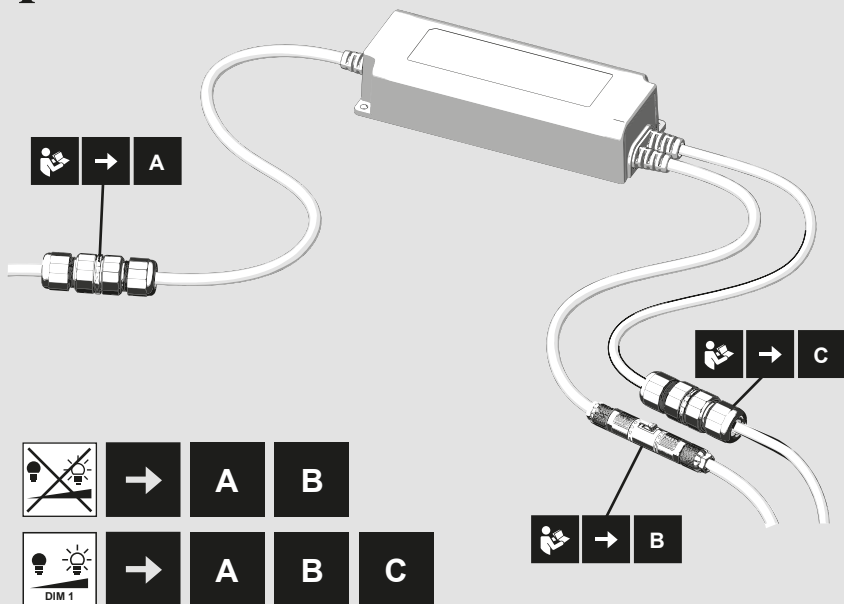
CODE	ON/OFF	0/10V	DALI	APP	PUSH	IPXX	V _{in}	V _{out}	P _{nom}	P _{max}
DV1075	✓	✓	X	X	X	IP65	110-240VAC	24VDC	90W	75W



i



i



1

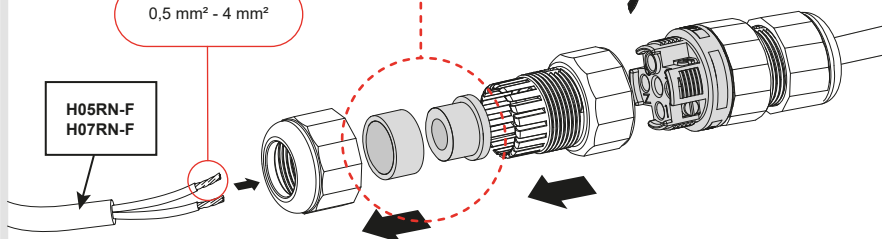
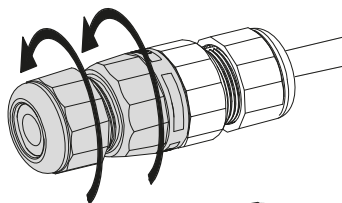


H05RN-F
H07RN-F

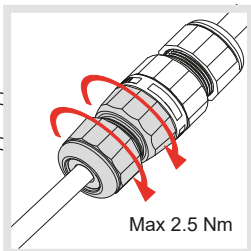
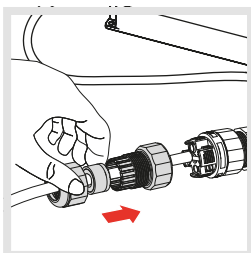
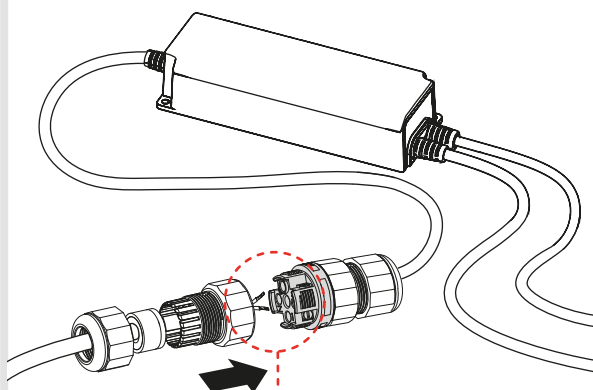
0,5 mm² - 4 mm²

Ø 7.0 - 9.0 mm

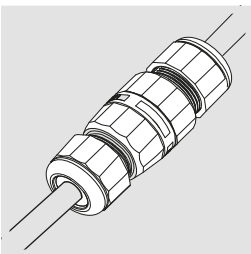
Ø 9.0 - 12.0 mm



2



Max 2.5 Nm



L

N



L

2

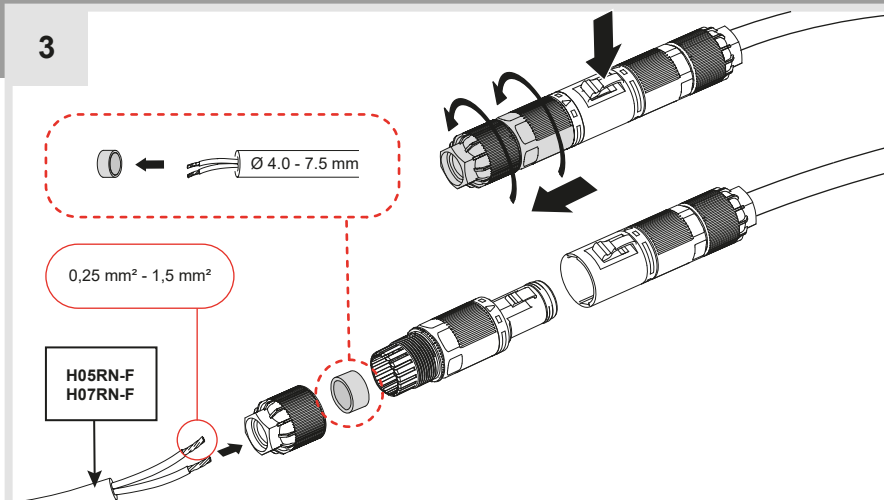
N

3

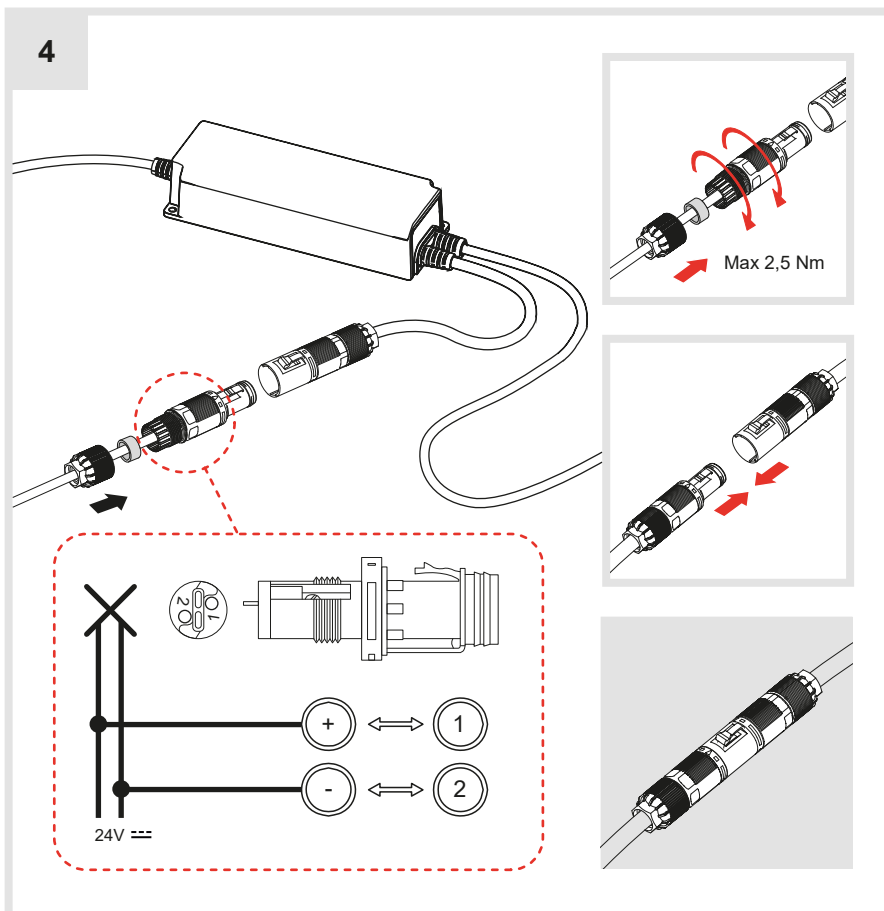
110-240V



3

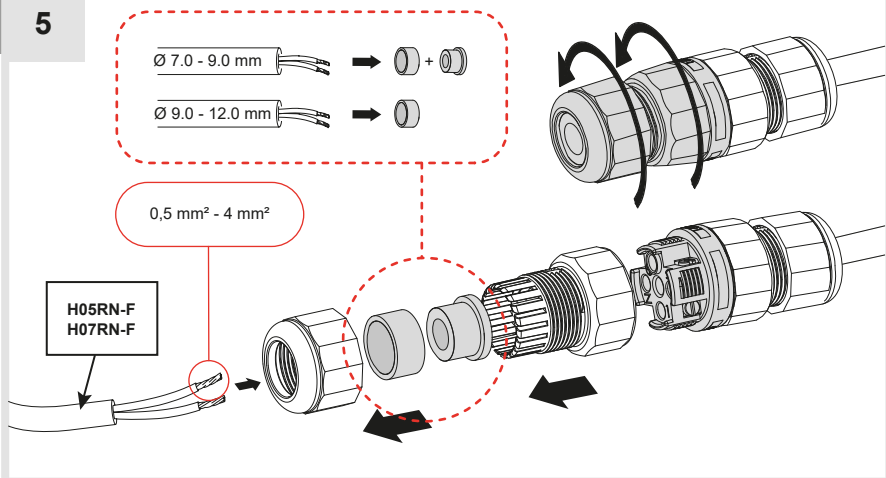


4

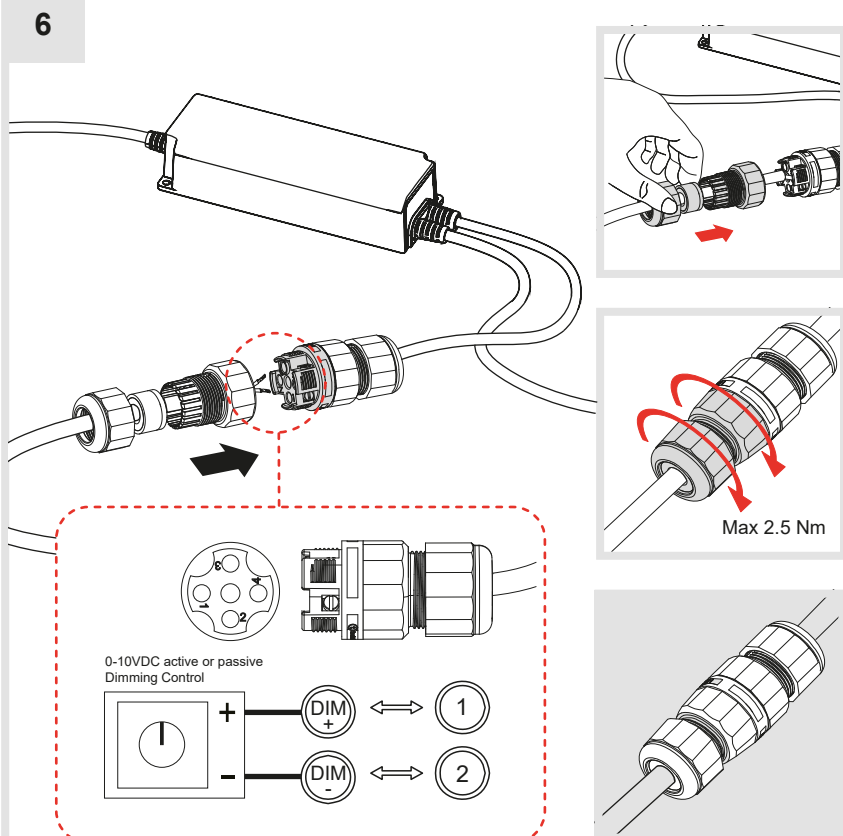


C

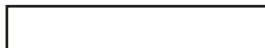
5



6



Artemide®



Artemide

via Bergamo, 18
20010 Pregnana M.se (MI)
ITALIA

tel. +39 02 935 181
fax +39 02 935 90 254
fax +39 02 935 90 496

www.artemide.com

VAT IT00846890150

Artemide Inc.

250 Karin Lane
Hicksville, NY 11801

Tel. 631 694 9292
Toll Free 1-877-Art-9111
Fax 631 694 9275

www.artemide.net

Artemide Ltée/Ltd.

11105 rue Renaude Lapointe
Montréal, Québec H1J 2T4

Tel. 514 323 6537
Toll Free 888 777 2783
Fax 514 323 8864

www.artemide.net

cod. Y513001349A