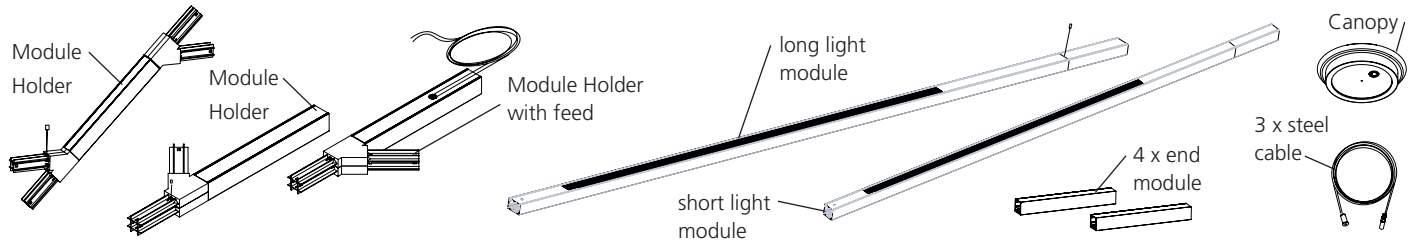




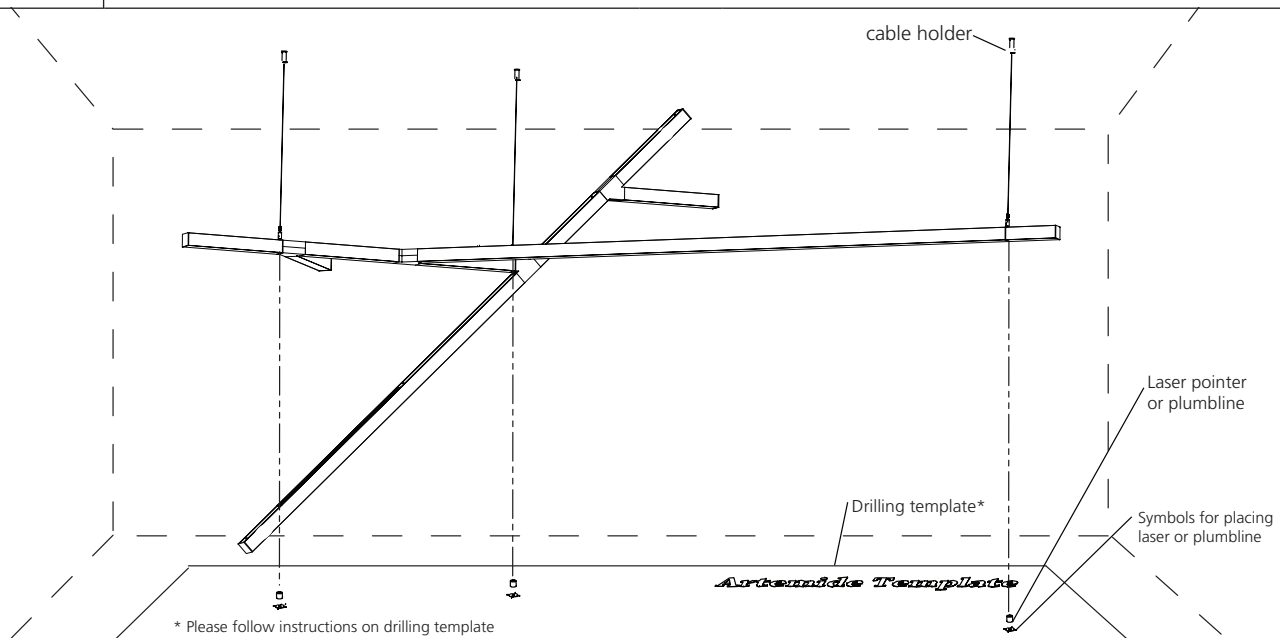
Attention: Read and understand these instructions before installing fixture. This fixture is intended for installation in accordance with National Electric Code and local regulation: To assure full compliance with local codes and regulations, check with your local electrical inspector before installation. This equipment is guaranteed only when used as indicated in these instructions; Therefore they should be kept for future reference. To prevent electrical shock, turn off power supply before carrying out any connection or maintenance operations.

Make sure you have all the elements of the fixture. Your box should contain the following parts;



STEP 1

Using the drilling template (Included with fixture), mark the fixing points on the ceiling with a laser pointer or plumbline.
Note: Drilling template only valid with standard light module lenght configuration.

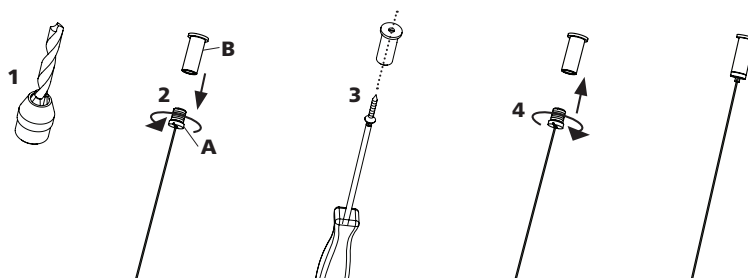


STEP 2

Install all steel suspension cables

1. Drill the ceiling.
2. Unscrew part A from B

3. Fix part B to the ceiling (Ø max screw: 5mm/0.2")
4. Fix part A to B

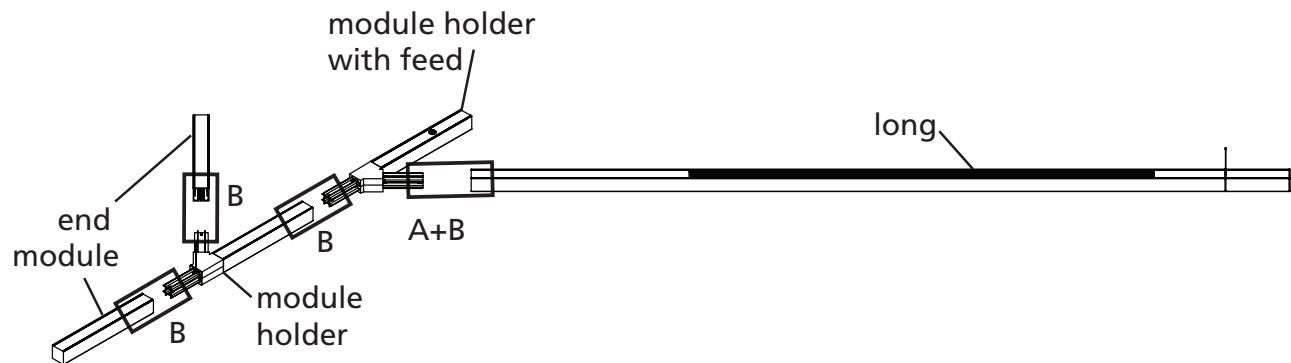




STEP 3

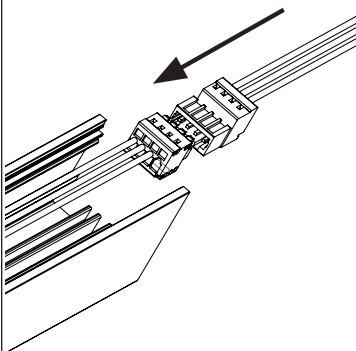
Assembly of the horizontal structure, electrical connection + module holder

Note: For different light orientation see STEP 9 (optional)



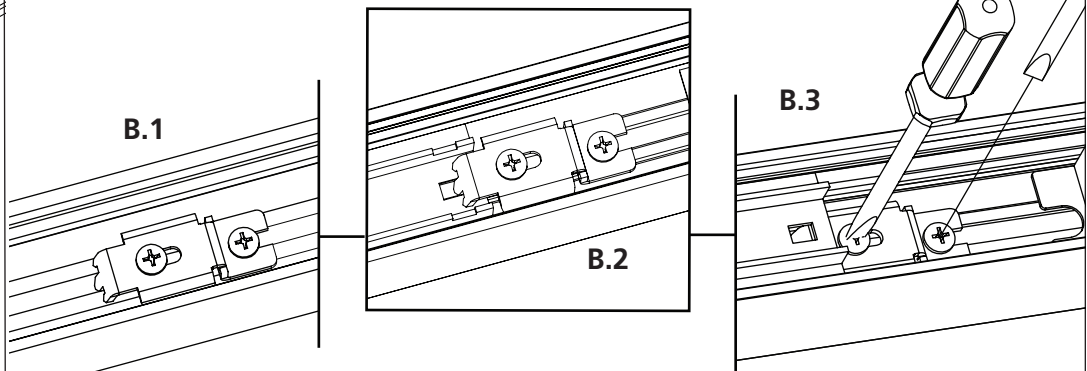
A ELECTRICAL CONNECTION

CLICK!



B MODULE HOLDER

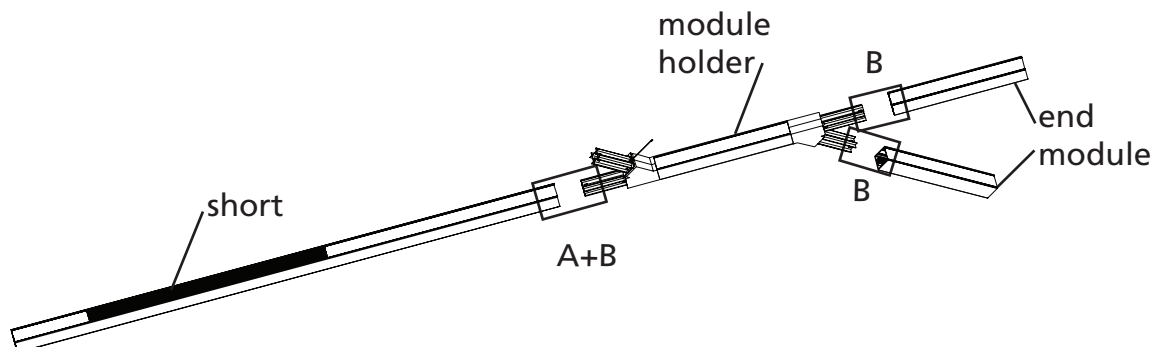
1. Remove cover and Loosen screws of bracket.
2. Insert joiner in arm by locking the tooth in the joiner hole.
3. Screw tightly the bracket and clip back the cover.



STEP 4

Assembly of the diagonal structure, electrical connection + module holder. (see STEP A and STEP B)

Note: For different light orientation see STEP 9 (optional)





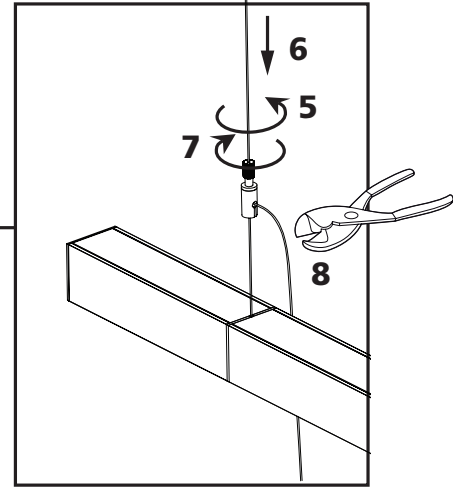
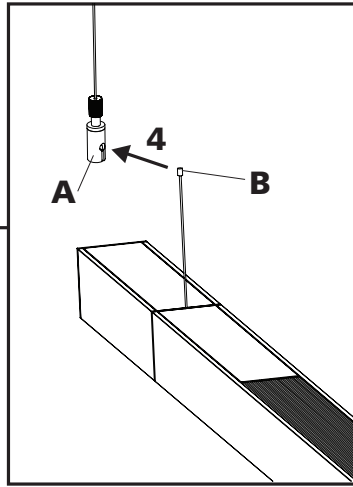
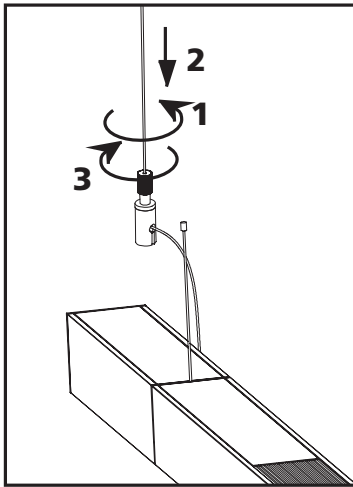
STEP 5

Hanging of the structure + Height adjustment

1. Loosen top cylinder of part A
2. Adjust to approximate required height
3. Tighten top cylinder
4. Insert part B into part A

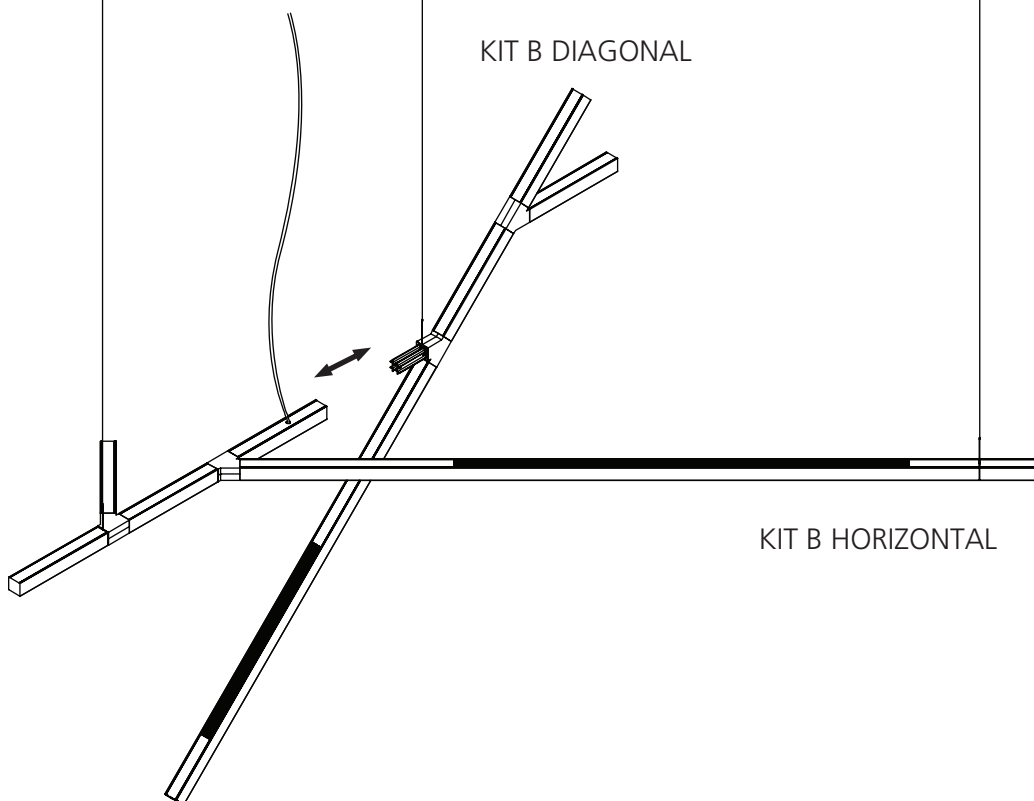
5. Loosen top cylinder of part A

6. Adjust to required height
7. Tighten top cylinder
8. Cut extra steel cable



STEP 6

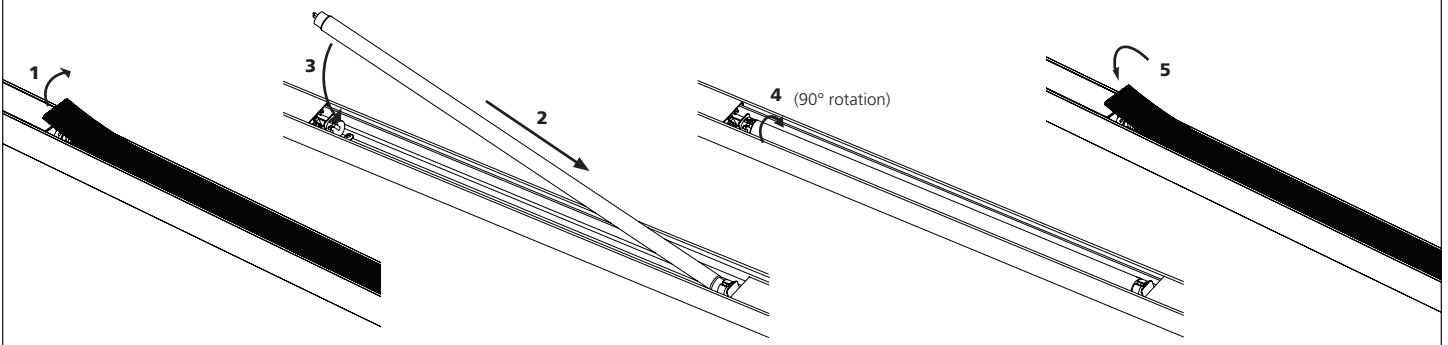
Hanging of diagonal structure + connection





STEP 7

Installation of the lamp for fluorescent luminaire



STEP 8

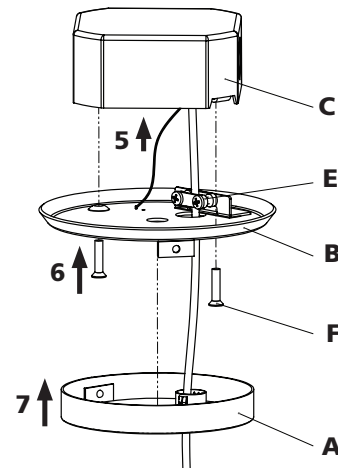
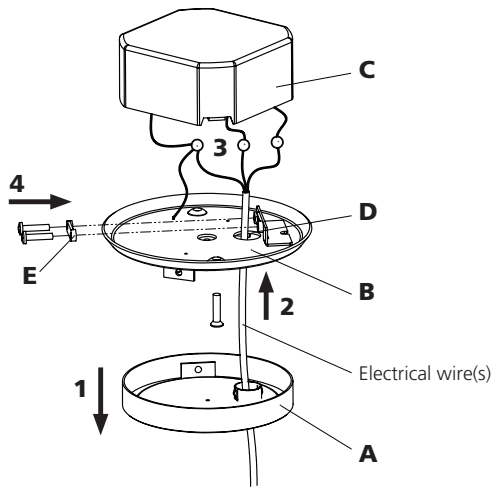
Fix the electrical wires and canopy

1. Remove part A
2. Pass Electrical wire(s) through part A and B and cut electrical wire(s) to required length
3. Make the appropriate electrical connections
4. Screw part E after connecting wires

5. Push the wires inside part C

6. Screw part B to part C

7. Clip part A to part B



Codes Ending by (CI)	Codes Ending by (ES,H3)	Codes Ending by (TV)																										
ON/OFF Standard	Dimmable - 3 Wires	0-10V Dimmable																										
<table><tr><td>FIXTURE WIRES</td><td>CEILING WIRES</td></tr><tr><td>BLACK</td><td>BLACK</td></tr><tr><td>WHITE</td><td>WHITE</td></tr><tr><td>GREEN</td><td>GREEN</td></tr><tr><td></td><td></td></tr></table>	FIXTURE WIRES	CEILING WIRES	BLACK	BLACK	WHITE	WHITE	GREEN	GREEN			<table><tr><td>FIXTURE WIRES</td><td>CEILING WIRES</td></tr><tr><td>BLACK</td><td>BLACK</td></tr><tr><td>WHITE</td><td>WHITE</td></tr><tr><td>GREEN</td><td>GREEN</td></tr><tr><td>PURPLE</td><td>DIM HOT</td></tr></table>	FIXTURE WIRES	CEILING WIRES	BLACK	BLACK	WHITE	WHITE	GREEN	GREEN	PURPLE	DIM HOT	<table><tr><td>FIXTURE WIRES</td><td>CEILING WIRES</td></tr><tr><td>PURPLE</td><td>0-10VDC +</td></tr><tr><td>GREY</td><td>DC-</td></tr></table>	FIXTURE WIRES	CEILING WIRES	PURPLE	0-10VDC +	GREY	DC-
FIXTURE WIRES	CEILING WIRES																											
BLACK	BLACK																											
WHITE	WHITE																											
GREEN	GREEN																											
FIXTURE WIRES	CEILING WIRES																											
BLACK	BLACK																											
WHITE	WHITE																											
GREEN	GREEN																											
PURPLE	DIM HOT																											
FIXTURE WIRES	CEILING WIRES																											
PURPLE	0-10VDC +																											
GREY	DC-																											

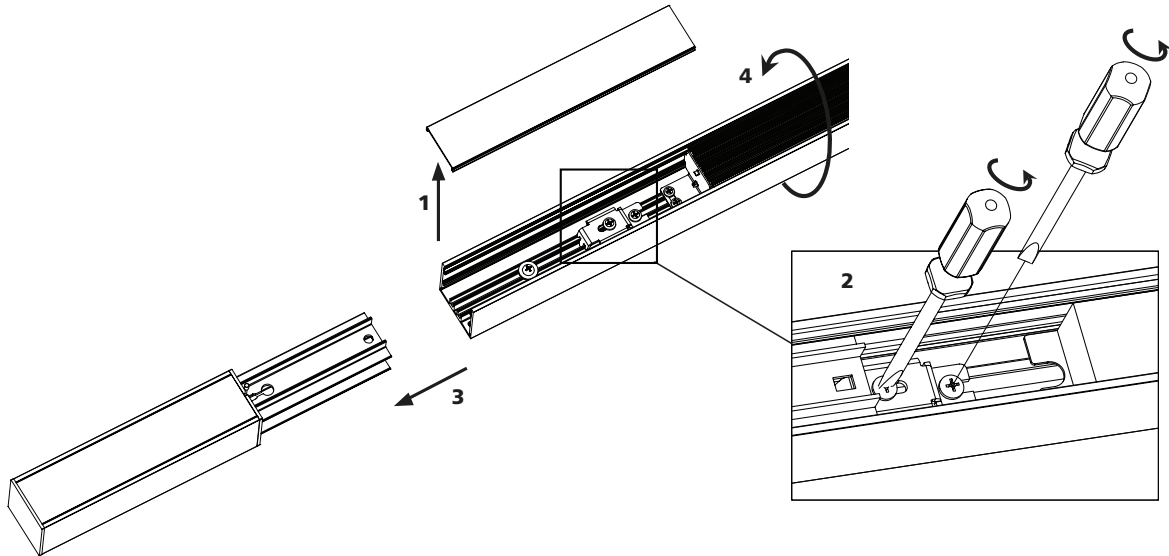
Details



STEP 9

For different light orientation (optional)
1. Remove cover to expose bracket.
2. Loosen screws.

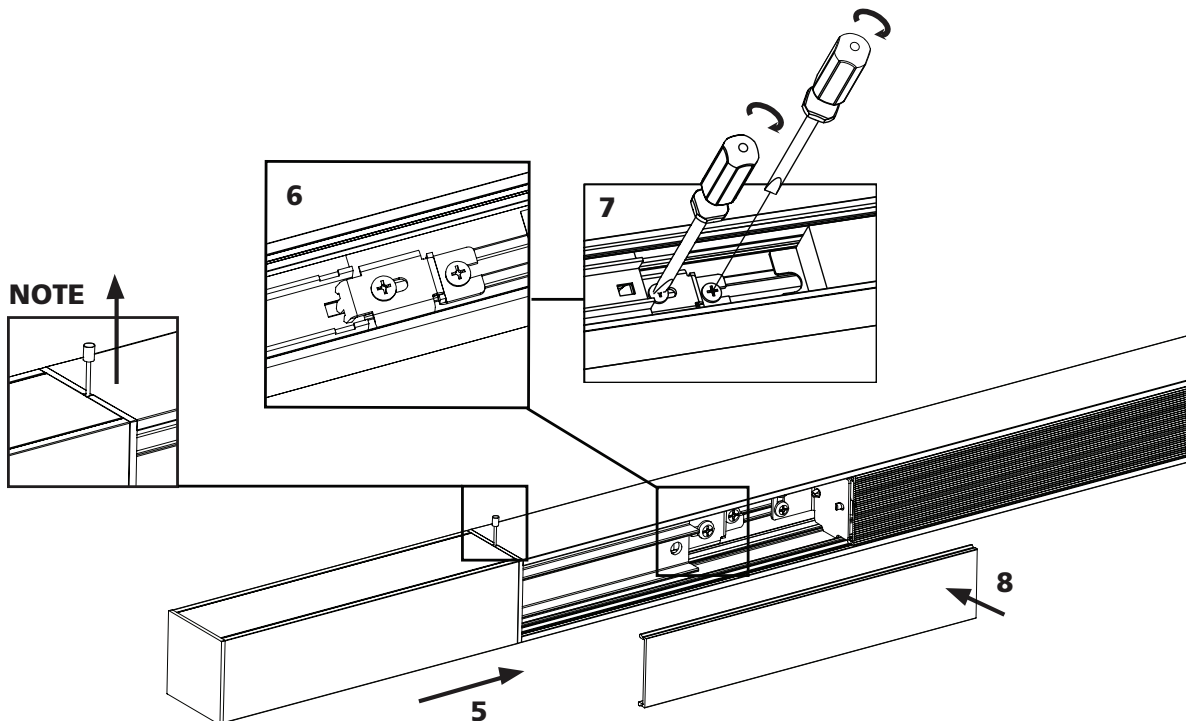
3. Remove end cap.
4. Flip light module.



5. Insert end cap back in light module
6. Lock the bracket tooth in the end cap hole.

7. Screw tightly the bracket.
8. Clip back the cover.

Note : Be sure at the end, that the cable holder is pointing at the ceiling.



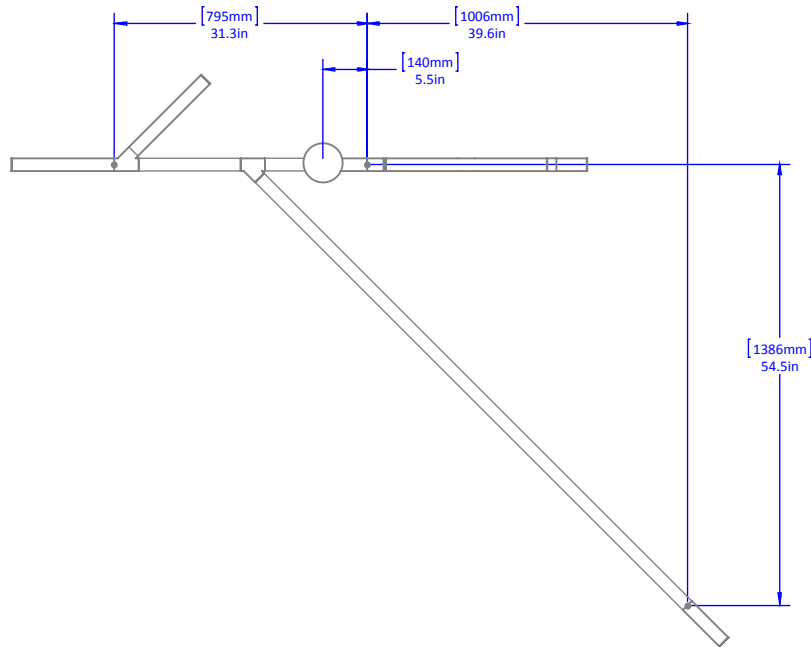


CEILING FIXING POINT

CODE: M1192_8_00_C1

CODE: M1192_8_00_TV

[mm]
[in]



CODE: M1192_8_00_ES

CODE: M1192_8_00_H3

[mm]
[in]

