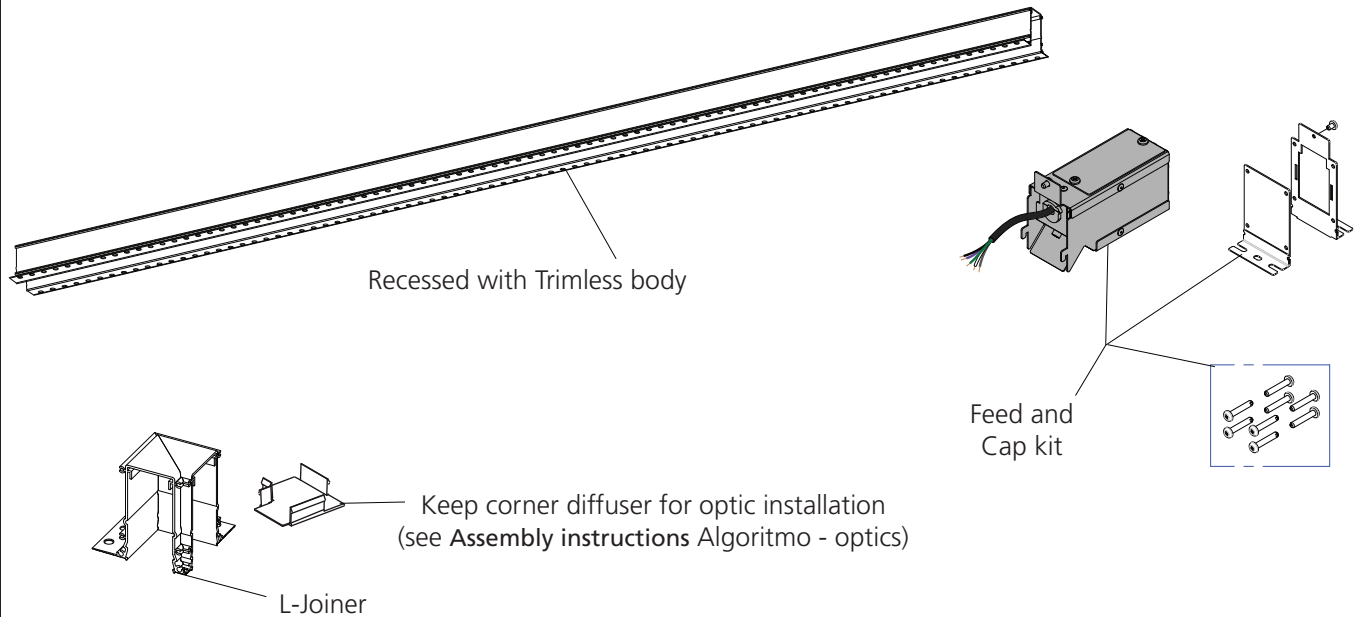




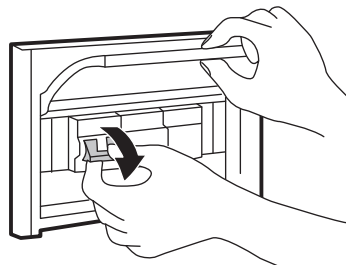
Attention: Read and understand these instructions before installing fixture. This fixture is intended for installation in accordance with National Electric Code and local regulation: To assure full compliance with local codes and regulations, check with your local electrical inspector before installation. This equipment is guaranteed only when used as indicated in these instructions; therefore they should be kept for future reference. To prevent electrical shock, turn off power supply before carrying out any connection or maintenance operations.

The following instructions allow you to install a recessed system configuration with a corner; your installation process may vary.



NOTE 1

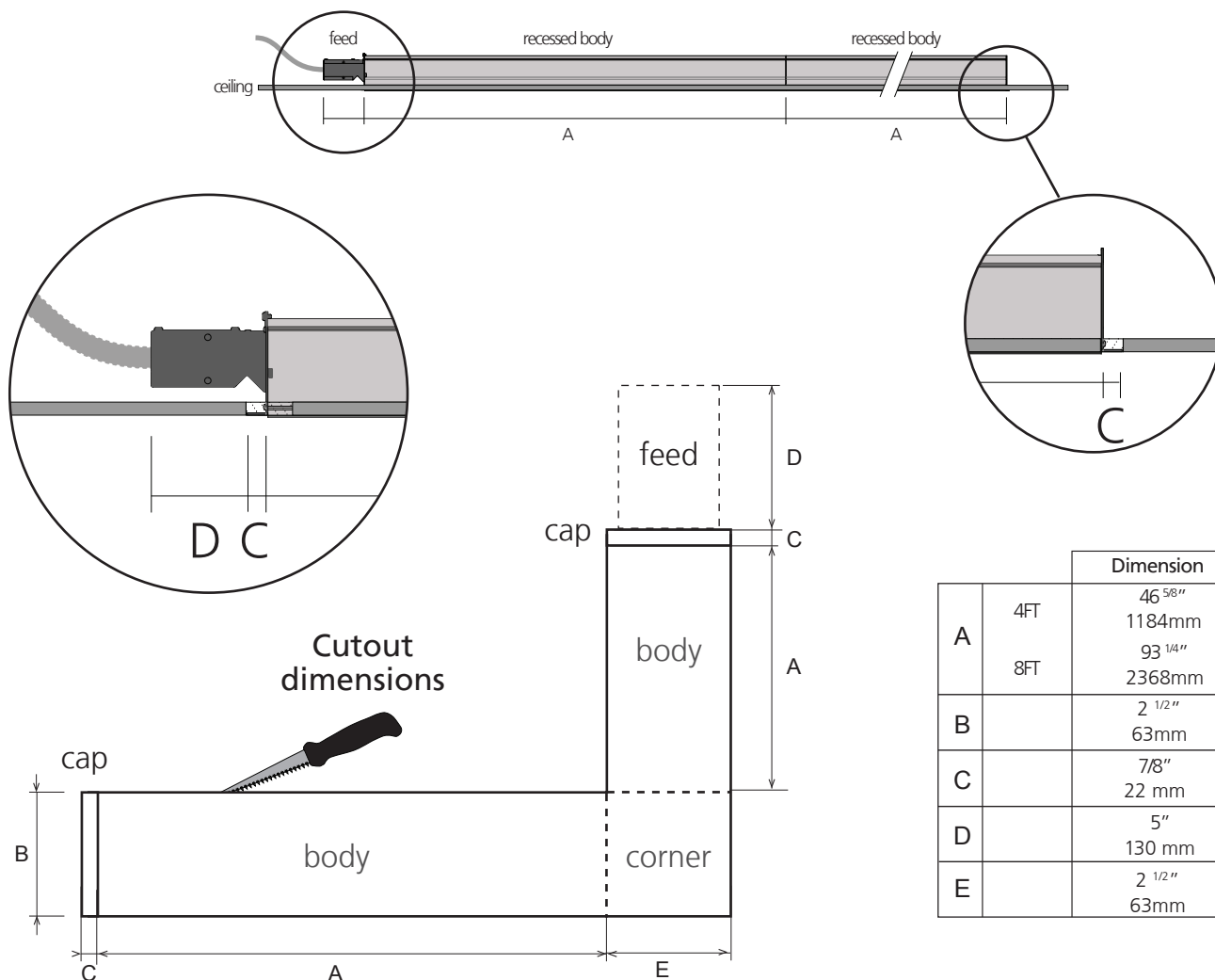
The electrical wiring contained in Feed kit is not capped; it is mandatory to disconnect the circuit to avoid electrical shock before making connections.





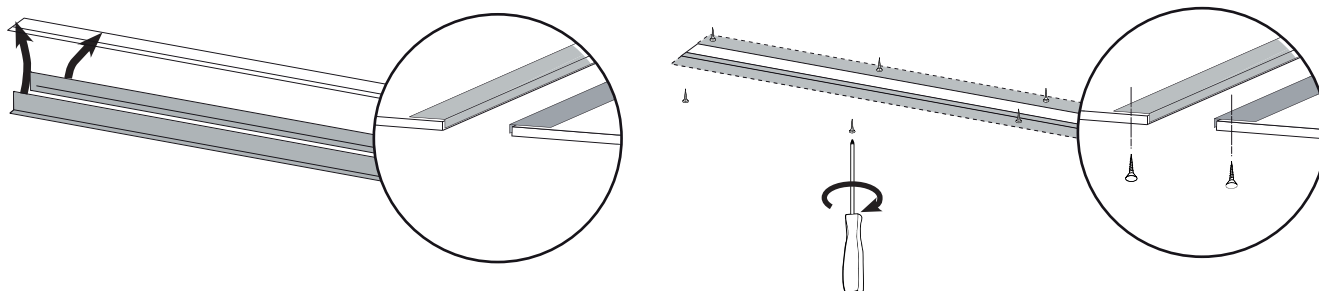
STEP 1

Measure and mark the layout of your specific configuration using the measurements below and cut. The beginning of a system run needs to contain the electrical feed housing for connections, which will be hidden once inserted.



STEP 2

Install perforated L-bracket inside ceiling aperture with drywall screws on both sides (screws not provided)

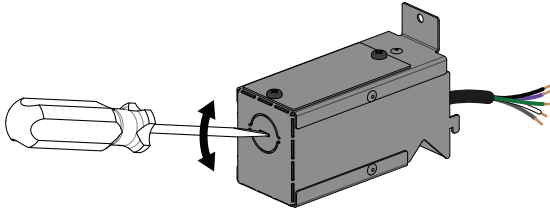




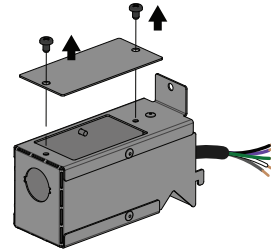
STEP 2

- 2.1 Pry out knock-out opening on connection housing
2.2 Remove screws holding top plate to gain access to internal wiring.

2.1



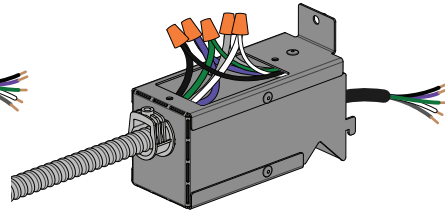
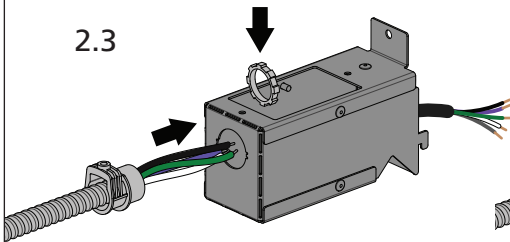
2.2



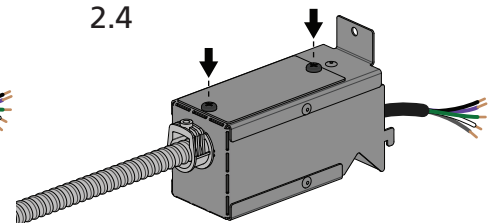
STEP 2 (cont.)

- 2.3 Insert armored cable (BX) and make connections to housing internal wiring.
2.4 Screw top plate back onto housing.

2.3



2.4



ALL MODELS:

CEILING WIRES		HOUSING WIRES
GREEN	G	GREEN/YELLOW
BLACK	L	BLACK
WHITE	N	WHITE

0-10V DIMMABLE VERSION:

CEILING WIRES		HOUSING WIRES
0-10V (+)	+	VIOLET (+)
0-10V (-)	-	GREY (-)

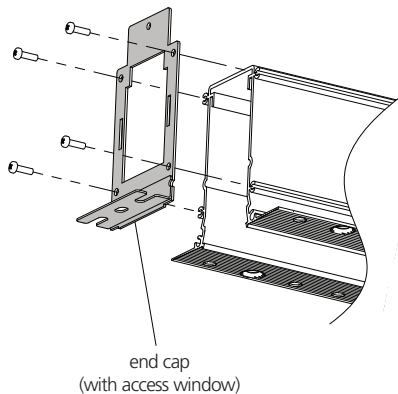
DALI DIMMABLE VERSION:

CEILING WIRES		HOUSING WIRES
DALI	DA	VIOLET
DALI	DA	GREY

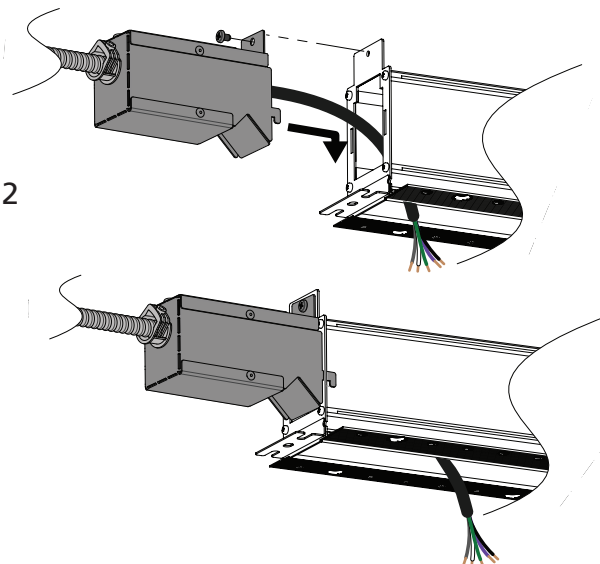
STEP 3

- 3.1 Screw end cap with access window to the first luminaire body.
3.2 Slide feed housing into place and secure with the screw on top.

3.1



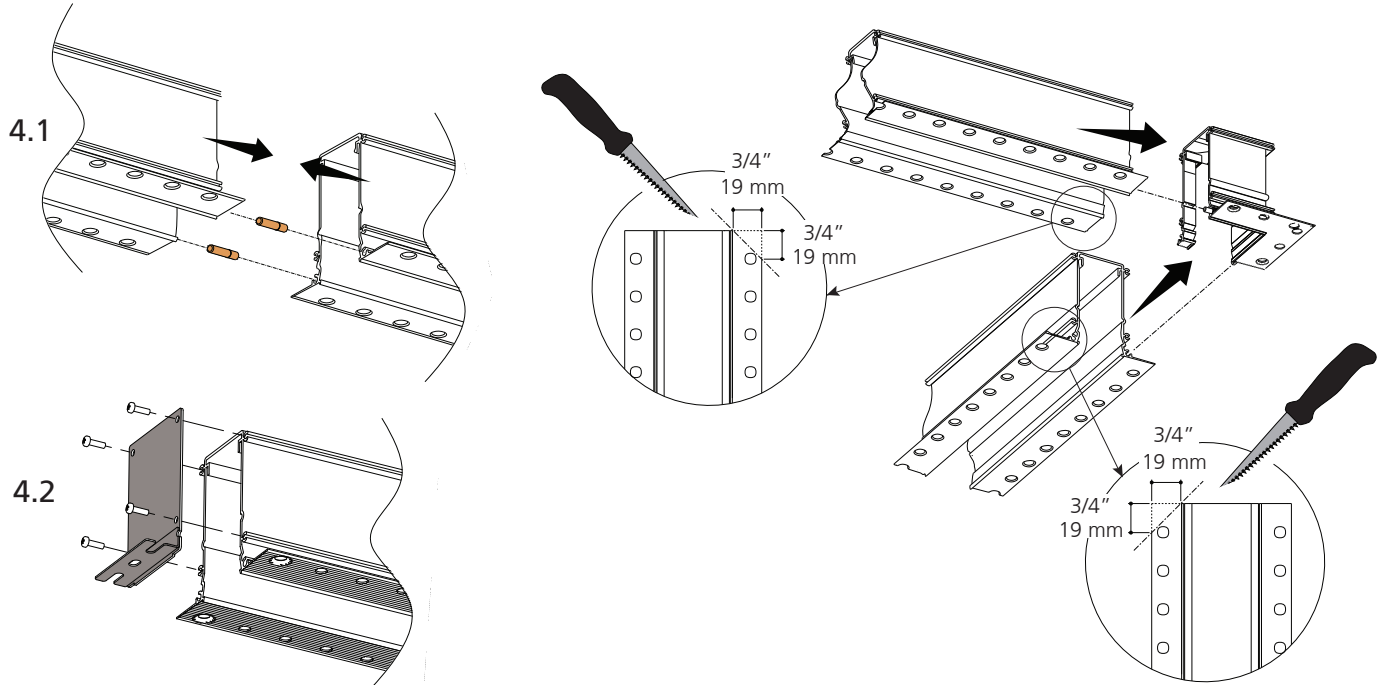
3.2





STEP 4

- 4.1 Insert guide pins in between the recessed modules and corner joiners if applicable to join all units.
(for corner jonction, cut each frame extrusion flange in angle to avoid conflict)
4.2 Screw in the other end cap to close off the end of the last unit in line.



STEP 5

- 5.1 Insert frame into the opening, starting with the connection housing.
5.2 Secure the frame in place with drywall screws on both sides at no more than 6 1/2" distance, using only the counter-sunk holes. (screws not included)
5.3 Cover flange with plaster/ joint compound, sand, paint and let dry before gear plate and optics installation.
NOTE : For installation see Gear Plate Installation document Y503-11986 and Optics Installation document Y503-12078.

