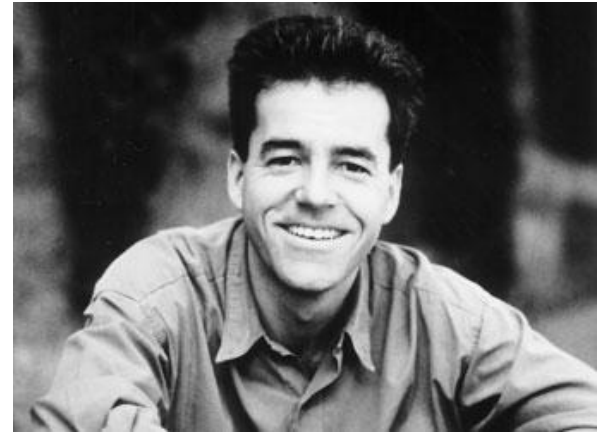


Reeds
Klaus Begasse



KLAUS BEGASSE

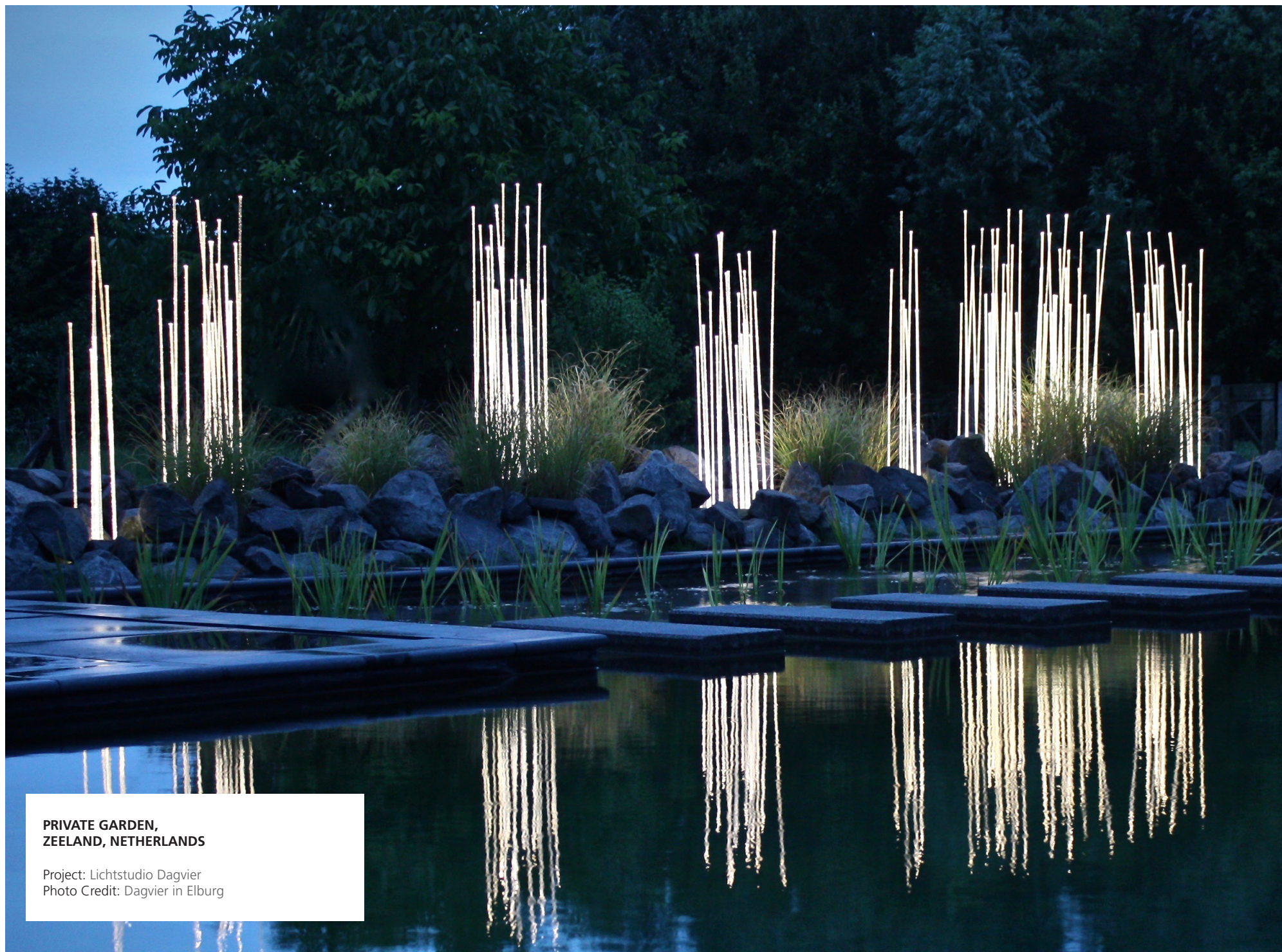
German-born designer Klaus Begasse runs a multi-disciplinary practice in Stuttgart. His organic-inspired Reeds are a modular, flexible outdoor product for Artemide.





WHIMSICAL

Originally designed by Klaus Begasse in the '60s, Reed's whimsical design inspires a modern-day fantasy. A wondrous interpretation of a unique fairy tale forest, its light architecture creates a spectacle of soft and bright light with its decorative ambience appeal whether it is made part of an interior or outdoor environment.



**PRIVATE GARDEN,
ZEELAND, NETHERLANDS**

Project: Lichtstudio Dagvier
Photo Credit: Dagvier in Elburg

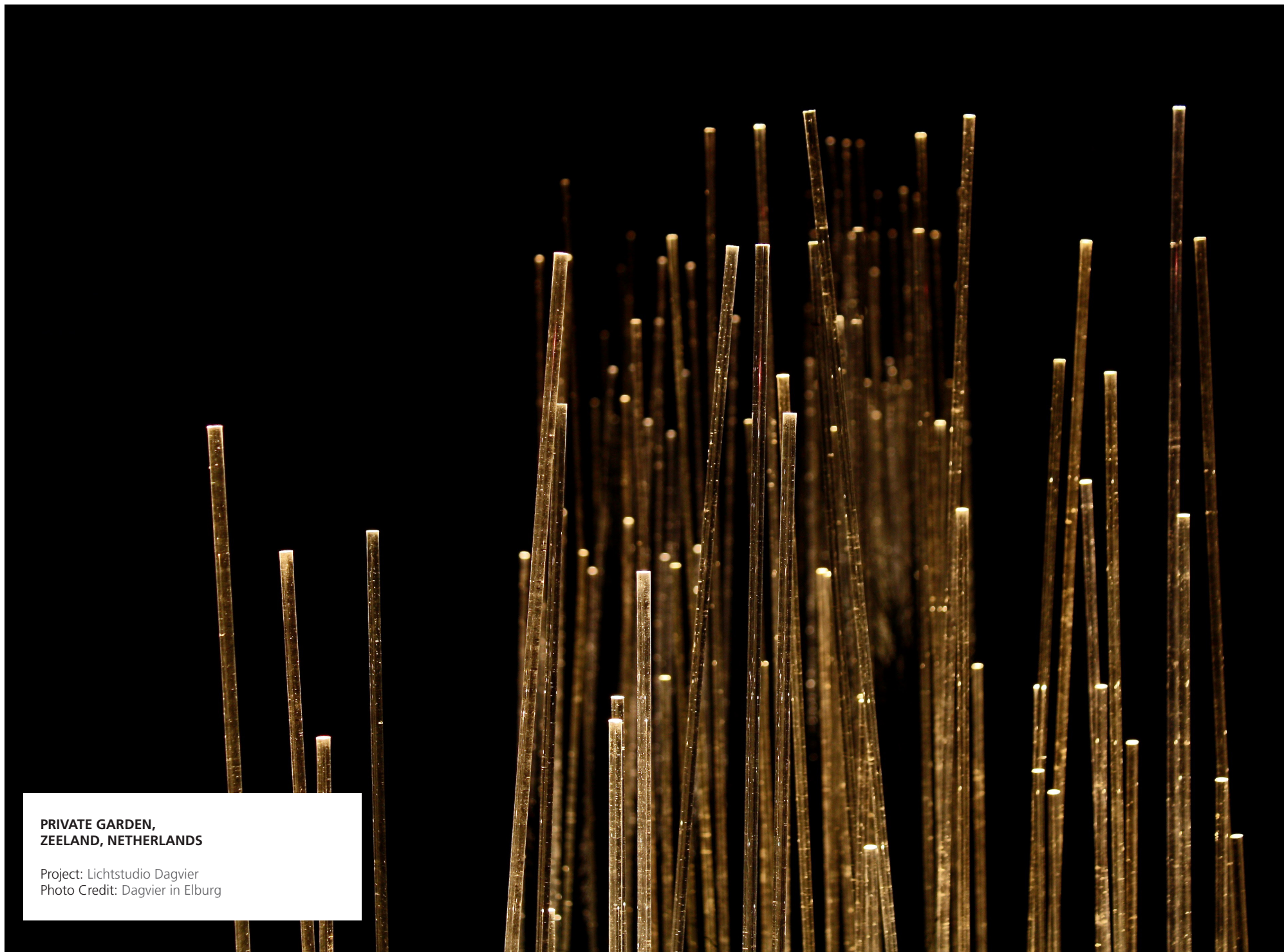
MODULAR

To enhance modern outdoor spaces, whether residential or hospitality exteriors, Reeds has the ability to be arranged in various patterns imagined by architects, designers, and customers to create unique exteriors.

AEROPORT PLATOV BUSINESS LOUNGE, ROSTOV ON DON, RUSSIA

Project: VOX Architects
Photo Credit: Mamuka Khelashvili





**PRIVATE GARDEN,
ZEELAND, NETHERLANDS**

Project: Lichtstudio Dagvier
Photo Credit: Dagvier in Elburg

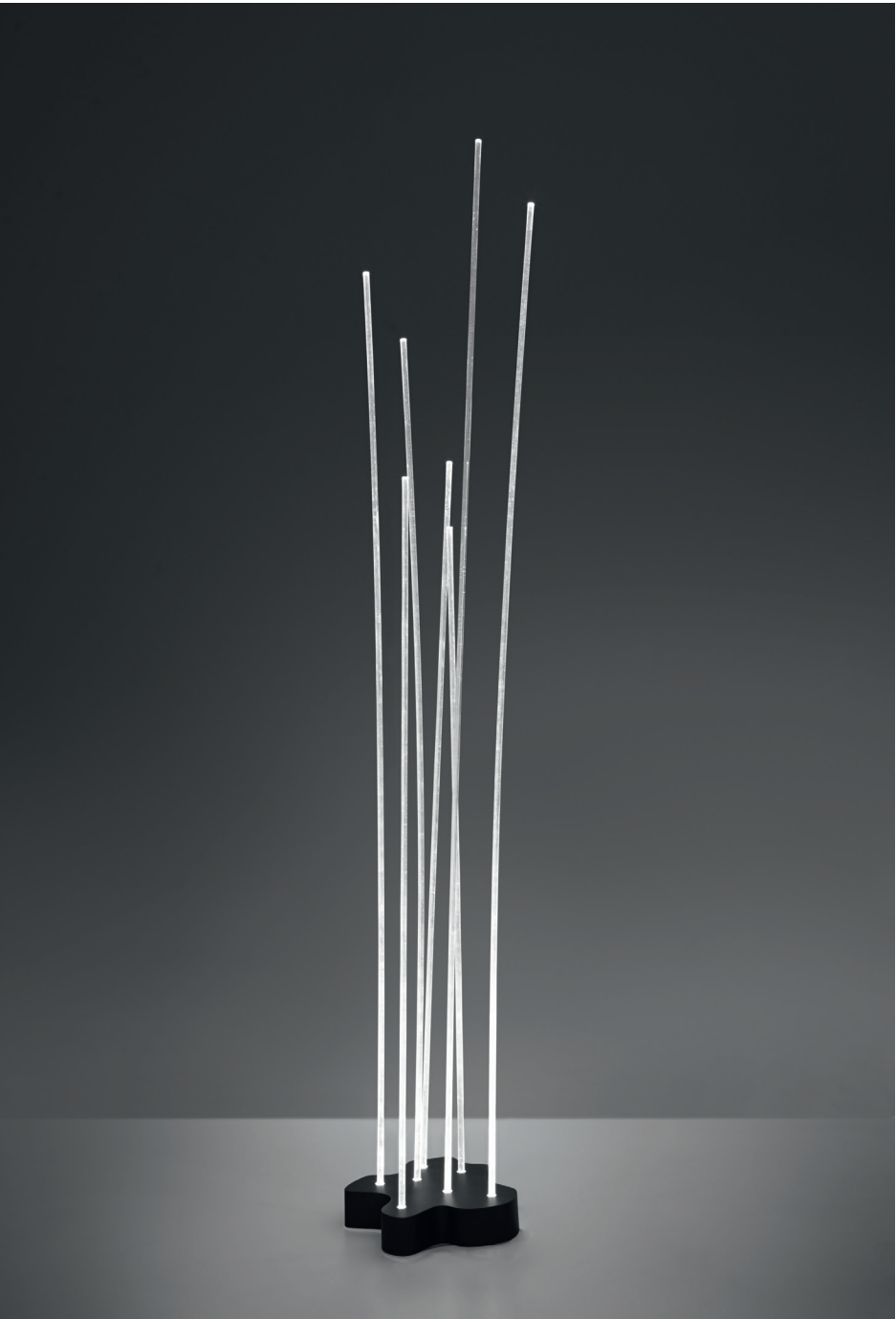


TECHNOLOGY

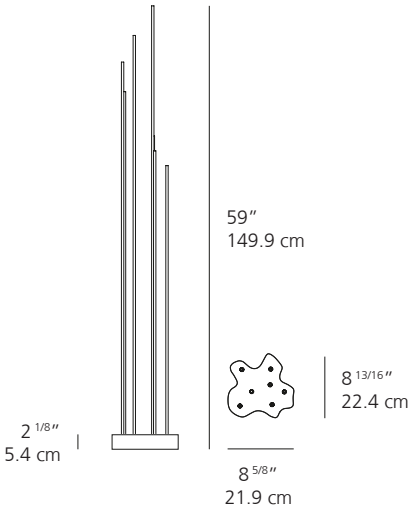
Reeds' intriguing design is empowered by its 7 PMMA rods which feature high-performance LEDs that ensure environmental friendly lighting and durability.



Reeds

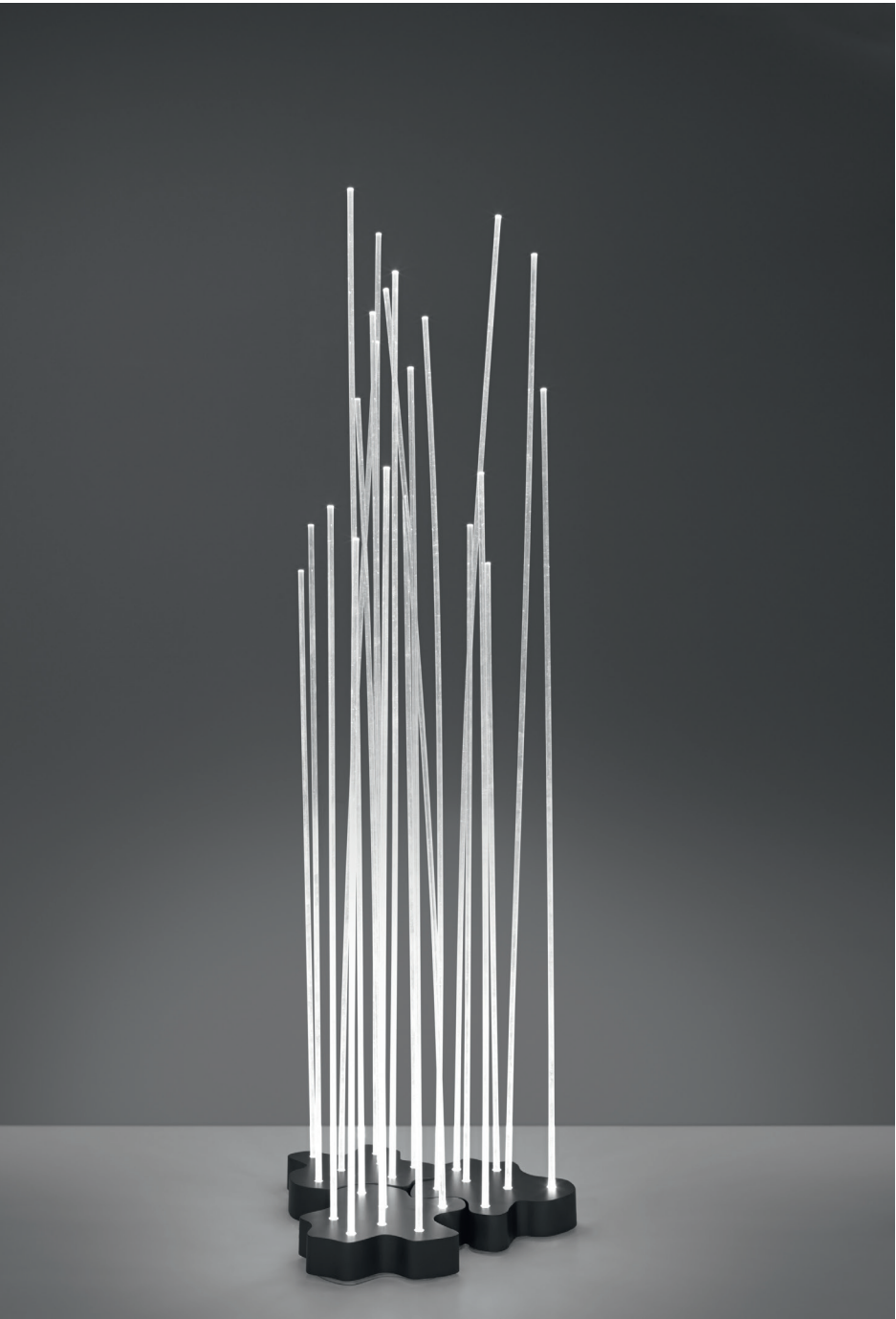


Technical Data

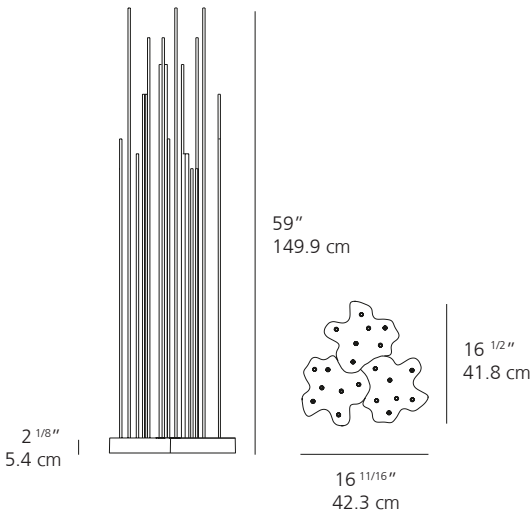


MATERIALS	Technopolymer aesthetic cover. Base made up of a polycarbonate casing installed between 2 AISI316 stainless steel plates by AISI316 stainless steel screws. Gasket made by silicone.
EMISSION	Diffused
LIGHT SOURCE	LED 9W 3000K >80 CRI
DIMMING FEATURE	Standard non dimmable
FINISH	○ Transparent
CERTIFICATIONS	c.UL.us listed, available in IP67 or IP68 rating

Reeds Triple



Technical Data



MATERIALS	Technopolymer aesthetic cover. Base made up of a polycarbonate casing installed between 2 AISI316 stainless steel plates by AISI316 stainless steel screws. Gasket made by silicone.
EMISSION	Diffused
LIGHT SOURCE	LED 27W 3000K >80 CRI
DIMMING FEATURE	Standard non dimmable
FINISH	○ Transparent
CERTIFICATIONS	c.UL.us listed, rated IP67

UNITED STATES HEADQUARTERS

Artemide Inc.

250 Karin Lane

Hicksville, NY 11801

T. 631-694-9292

Toll Free 1-877-Art-9111

email: infousa@artemide.net

CANADIAN HEAD OFFICE

Artemide Canada Ltd.

11105, rue Renaude Lapointe

Montréal, QC H1J 2T4

T. 514-323-6537

Toll Free 1-888-777-2783

email: infocanada@artemide.net

Artemide®

For retail sales contact information, please visit

www.artemide.net/store-locator

For contract sales contact information, please visit

www.artemide.net/sales-representative