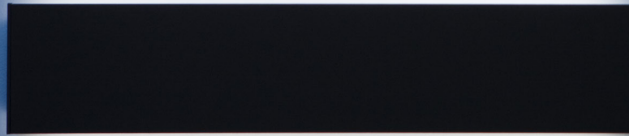
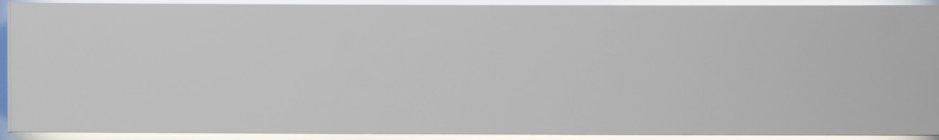


LINEAFLAT & LINEACURVE

—
BY
NA DESIGN





SIMPLICITY

Lineaflat features a smooth surface, while Lineacurve has a softly shaped outward curve. The fixtures' sleek, contemporary design add elegant lines to any application, residential or commercial.



VARIETY

The Linea family is available in both flat and curved models, in 4 different lengths. The fixture can be applied to the wall or ceiling, either vertically or horizontally. Available in white or anthracite grey.

FUNCTIONALITY

Lineaflat and Lineacurve are dimmable, use a high performance LED and are suitable for ADA applications. The fixture is designed to cover a standard junction box and provides direct, indirect or direct/indirect lighting.



LINEA FLAT wall | ceiling

LINEA FLAT MINI wall / ceiling



EMISSION
mono (1 side illuminated)
dual (2 side illuminated)

CRI
>90

LIGHT SOURCE
LED
direct
6.1W
direct/indirect
12.2W
3000K or 3500K

FINISH
 anthracite grey
 white

CERTIFICATIONS
c.UL.us listed, ADA

DIMMING FEATURE
phase dimming 2-wire
120V (also on/off 277V)
0-10V dimming
120V-277V

DIMENSIONS

6 1/8" | 15.8 cm
1 15/16" | 4.9 cm

TECHNICAL DATA	80CRI 3500K			
	mini	12	24	36
Dual:				
Input Powder:	12.2W	19.6W	41.8W	58.8W
Lumen Output:	516 lm	874 lm	1835 lm	tt
Efficacy:	42.4lm/W	44.6lm/W	43.8lm/W	43.5lm/W

mono:				
Input Powder:	6.1W	9.8W	20.9W	29.4W
Lumen Output:	258 lm	437 lm	917 lm	1280 lm
Efficacy:	42.4lm/W	44.6lm/W	43.8lm/W	43.5lm/W

LINEA FLAT 12 wall / ceiling



EMISSION
mono (1 side illuminated)
dual (2 side illuminated)

LIGHT SOURCE
LED
direct 9.8W
direct/indirect 19.6 lm/W
3000K or 3500K

DIMMING FEATURE
phase dimming 2-wire 120V (also on/off 277V)
0-10V dimming 120V-277V

CRI
>90

DIMENSIONS

12 3/16" | 31 cm
1 15/16" | 4.9 cm

FINISH
 anthracite grey
 white

CERTIFICATIONS
c.UL.us listed, ADA

TECHNICAL DATA
Refer to table for technical data

LINEA FLAT 24 wall / ceiling



EMISSION
mono (1 side illuminated)
dual (2 side illuminated)

LIGHT SOURCE
LED
direct 20.9W
direct/indirect 41.8 lm/W
3000K or 3500K

DIMMING FEATURE
phase dimming 2-wire 120V (also on/off 277V)
0-10V dimming 120V-277V

CRI
>90

DIMENSIONS

24 1/8" | 61.3 cm
1 15/16" | 4.9 cm

FINISH
 anthracite grey
 white

CERTIFICATIONS
c.UL.us listed, ADA

TECHNICAL DATA
Refer to table for technical data

LINEA FLAT 36 wall / ceiling



EMISSION
mono (1 side illuminated)
dual (2 side illuminated)

LIGHT SOURCE
LED
direct 29.4W
direct/indirect 58.8 lm/W
3000K or 3500K

DIMMING FEATURE
phase dimming 2-wire 120V (also on/off 277V)
0-10V dimming 120V-277V

CRI
>90

DIMENSIONS

1 15/16" | 4.9 cm
36" | 91.9 cm

FINISH
 anthracite grey
 white

CERTIFICATIONS
c.UL.us listed, ADA

TECHNICAL DATA
Refer to table for technical data

LINEA CURVE wall | ceiling

LINEA CURVE MINI wall / ceiling



EMISSION
mono (1 side illuminated)
dual (2 side illuminated)

CRI
>90

LIGHT SOURCE
LED
direct
6.1W
direct/indirect
12.2W
3000K or 3500K



FINISH
 anthracite grey
 white

CERTIFICATIONS
c.UL.us listed, ADA

DIMMING FEATURE
phase dimming 2-wire
120V (also on/off 277V)
0-10V dimming
120V-277V

DIMENSIONS

2 3/16" 5.5 cm | 6 1/4" 15.8 cm

4 1/2" 11.4 cm |  

TECHNICAL DATA	80CRI 3500K			
	mini	12	24	36
Dual:				
Input Powder:	12.2W	19.6W	41.8W	58.8W
Lumen Output:	516 lm	874 lm	1835 lm	tt
Efficacy:	42.4lm/W	44.6lm/W	43.8lm/W	43.5lm/W

mono:				
Input Powder:	6.1W	9.8W	20.9W	29.4W
Lumen Output:	258 lm	437 lm	917 lm	1280 lm
Efficacy:	42.4lm/W	44.6lm/W	43.8lm/W	43.5lm/W

LINEA CURVE 12 wall / ceiling



EMISSION
mono (1 side illuminated)
dual (2 side illuminated)



LIGHT SOURCE
LED
direct 9.8W
direct/indirect 19.6 lm/W
3000K or 3500K

DIMMING FEATURE
phase dimming 2-wire 120V (also on/off 277V)
0-10V dimming 120V-277V

CRI
>90

DIMENSIONS

2 3/16" 5.5 cm | 12 3/16" 31 cm

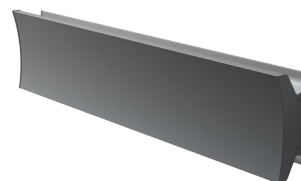
4 1/2" 11.4 cm |  

FINISH
 anthracite grey
 white

CERTIFICATIONS
c.UL.us listed, ADA

TECHNICAL DATA
Refer to table for technical data

LINEA CURVE 24 wall / ceiling



EMISSION
mono (1 side illuminated)
dual (2 side illuminated)



LIGHT SOURCE
LED
direct 20.9W
direct/indirect 41.8 lm/W
3000K or 3500K

DIMMING FEATURE
phase dimming 2-wire 120V (also on/off 277V)
0-10V dimming 120V-277V

CRI
>90

DIMENSIONS

2 3/16" 5.5 cm | 24 1/8" 61.3 cm

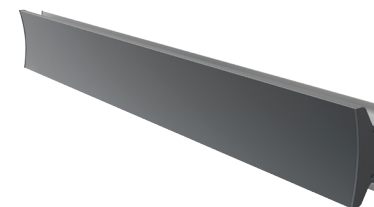
4 1/2" 11.4 cm |  

FINISH
 anthracite grey
 white

CERTIFICATIONS
c.UL.us listed, ADA

TECHNICAL DATA
Refer to table for technical data

LINEA CURVE 36 wall / ceiling



EMISSION
mono (1 side illuminated)
dual (2 side illuminated)

LIGHT SOURCE
LED
direct 29.4W
direct/indirect 58.8 lm/W
3000K or 3500K

DIMMING FEATURE
phase dimming 2-wire 120V (also on/off 277V)
0-10V dimming 120V-277V

CRI
>90

DIMENSIONS

2 3/16" 5.5 cm | 36" 91.9 cm

4 1/2" 11.4 cm |  

FINISH
 anthracite grey
 white

CERTIFICATIONS
c.UL.us listed, ADA

TECHNICAL DATA
Refer to table for technical data

*For **retail sales** contact information, please visit*
www.artemide.net/store-locator



*For **contract sales** contact information, please visit*
www.artemide.net/contract-sales