

Code:	Project:	Type:
	Notes:	

ALPHABET OF LIGHT

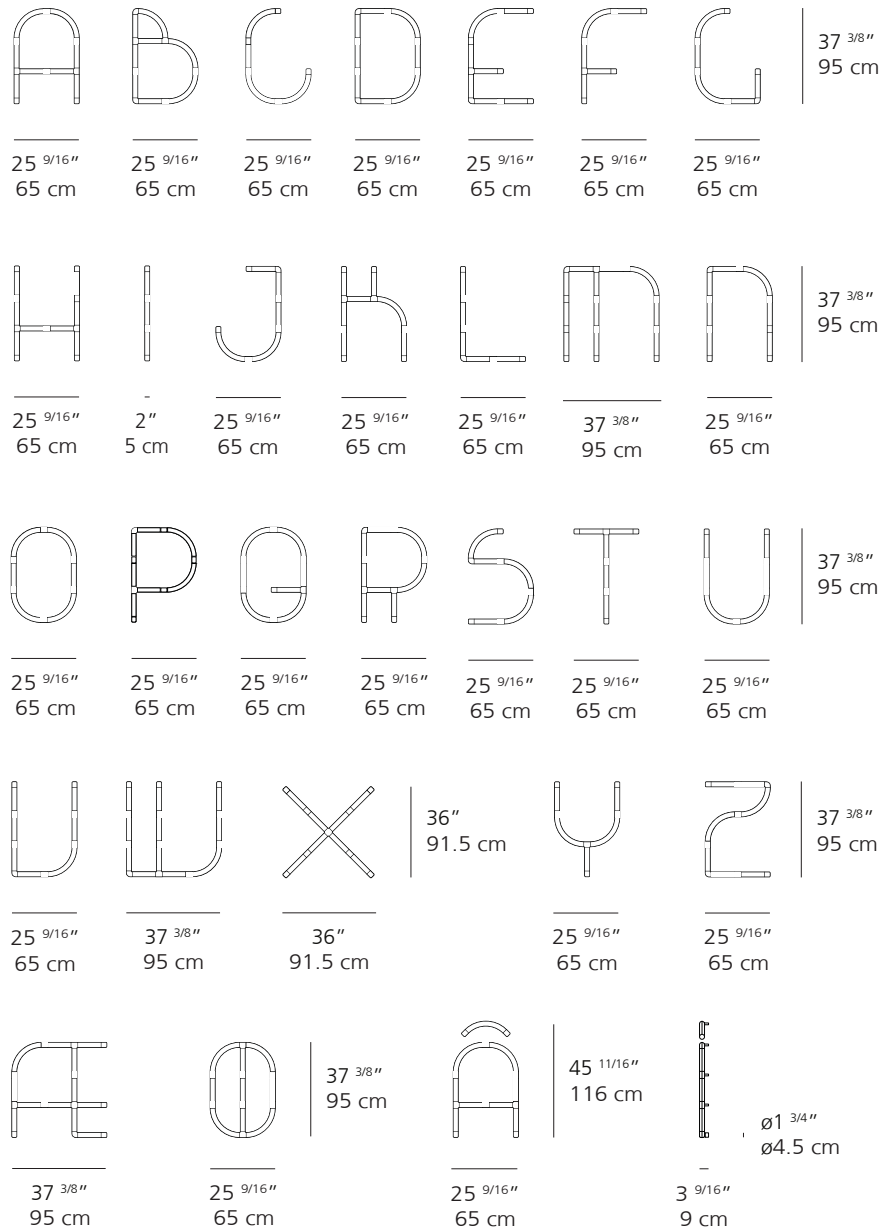
Big - Bjarke Ingels Group



UPPERCASE:



Letter	Code	Power consumption	Lumen Delivered	Efficacy (lm/W)	Qty
A	□ 1201A00A	30W	2011lm	67.0	
B	□ 1201B00A	31W	2156lm	69.5	
C	□ 1201C00A	20W	1296lm	64.8	
D	□ 1201D00A	29W	2011lm	69.3	
E	□ 1201E00A	26W	1651lm	63.5	
F	□ 1201F00A	19W	1221lm	64.3	
G	□ 1201G00A	21W	1366lm	65.0	
H	□ 1201H00A	27W	1721lm	63.7	
I	□ 1201I00A	11W	646lm	58.7	
J	□ 1201J00A	21W	1366lm	65.0	
K	□ 1201K00A	26W	1651lm	63.5	
L	□ 1201L00A	17W	1076lm	63.3	
M	□ 1201M00A	38W	2512lm	66.1	
N	□ 1201N00A	25W	1651lm	66.0	
O	□ 1201O00A	27W	1871lm	69.3	
P	□ 1201P00A	27W	1796lm	66.5	
Q	□ 1201Q00A	31W	2086lm	67.3	
R	□ 1201R00A	30W	2011lm	67.0	
S	□ 1201S00A	23W	1511lm	65.7	
T	□ 1201T00A	17W	1076lm	63.3	
U	□ 1201U00A	24W	1581lm	65.9	
V	□ 1201V00A	25W	1651lm	66.0	
W	□ 1201W00A	38W	2512lm	66.1	
X	□ 1201X00A	27W	1721lm	63.7	
Y	□ 1201Y00A	21W	1366lm	65.0	
Z	□ 1201Z00A	27W	1796lm	66.5	
Æ	□ 1201Æ00A	42W	2727lm	64.9	
Ø	□ 1201Ø00A	36W	2517lm	69.9	
Â	□ 1201Â00A	25W	1656lm	66.2	

Data for standard 3000K 80CRI on 24VDC. Efficiency: 69%



FEATURES:

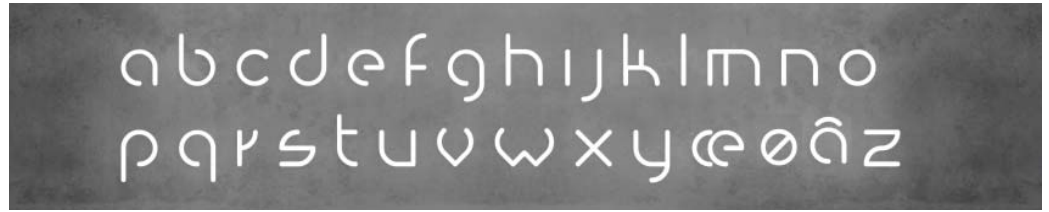
Construction : Illuminated tubes in opaque injection molded PMMA. Brushed aluminum support mounts. 360° light emission. Positioning template included.
Distance from wall 3 9/16" (9 cm). illuminated tube of ø 2" (5 cm)

Label:  US - suitable for dry locations. **ADA**
Class: IP20 

Code:	Project:	Type:
	Notes:	

ALPHABET OF LIGHT

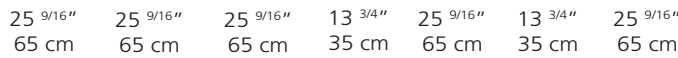
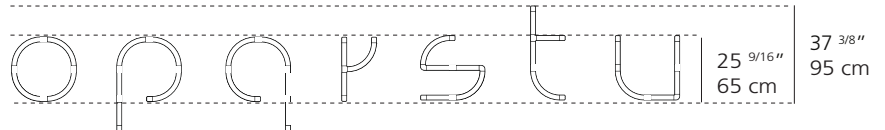
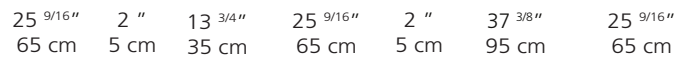
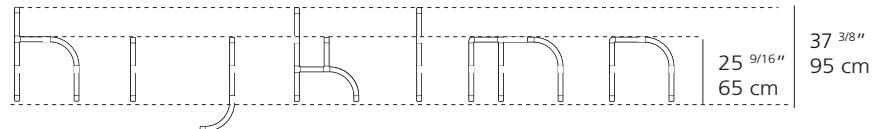
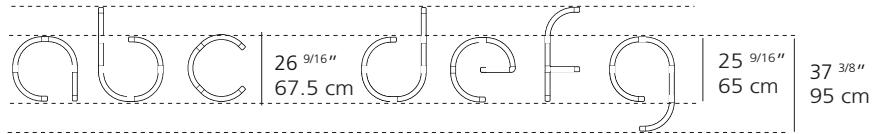
Big - Bjarke Ingels Group



LOWERCASE:

Letter	Code	Power consumption	Lumen Delivered	Efficacy (lm/W)	Qty
a	<input type="checkbox"/> 1202A00A	20W	1296lm	64.8	
b	<input type="checkbox"/> 1202B00A	23W	1511lm	65.7	
c	<input type="checkbox"/> 1202C00A	17W	1081lm	63.6	
d	<input type="checkbox"/> 1202D00A	23W	1511lm	65.7	
e	<input type="checkbox"/> 1202E00A	20W	1296lm	64.8	
f	<input type="checkbox"/> 1202F00A	16W	1006lm	62.9	
g	<input type="checkbox"/> 1202G00A	25W	1656lm	66.2	
h	<input type="checkbox"/> 1202H00A	23W	1436lm	62.4	
i	<input type="checkbox"/> 1202I00A	8W	430lm	53.7	
j	<input type="checkbox"/> 1202J00A	13W	791lm	60.8	
k	<input type="checkbox"/> 1202K00A	23W	1436lm	62.4	
l	<input type="checkbox"/> 1202L00A	11W	646lm	58.7	
m	<input type="checkbox"/> 1202M00A	29W	1866lm	64.3	
n	<input type="checkbox"/> 1202N00A	19W	1221lm	64.3	
o	<input type="checkbox"/> 1202O00A	21W	1441lm	68.6	
p	<input type="checkbox"/> 1202P00A	23W	1511lm	65.7	
q	<input type="checkbox"/> 1202Q00A	23W	1511lm	65.7	
r	<input type="checkbox"/> 1202R00A	14W	791lm	56.5	
s	<input type="checkbox"/> 1202S00A	21W	1366lm	65.0	
t	<input type="checkbox"/> 1202T00A	17W	1006lm	59.2	
u	<input type="checkbox"/> 1202U00A	19W	1221lm	64.3	
v	<input type="checkbox"/> 1202V00A	18W	1151lm	63.9	
w	<input type="checkbox"/> 1202W00A	24W	1581lm	65.9	
x	<input type="checkbox"/> 1202X00A	15W	861lm	57.4	
y	<input type="checkbox"/> 1202Y00A	25W	1581lm	63.2	
z	<input type="checkbox"/> 1202Z00A	24W	1581lm	65.9	
æ	<input type="checkbox"/> 1202AE00A	32W	2016lm	63.0	
ø	<input type="checkbox"/> 1202S00A	27W	1871lm	69.3	
â	<input type="checkbox"/> 1202E00A	25W	1656lm	66.2	

Data for standard 3000K 80CRI on 24VDC. Efficiency: 69%



FEATURES:

Construction : Illuminated tubes in opaque injection molded PMMA. Brushed aluminum support mounts. 360° light emission. Positioning template included. Distance from wall 3 9/16" (9 cm), illuminated tube of ø 2" (5 cm)

Label: - suitable for dry locations

Class: IP20

Code:	Project:	Type:
	Notes:	

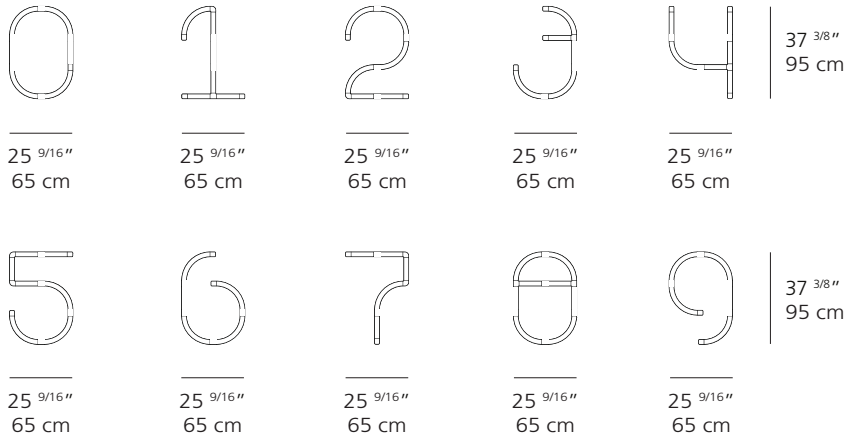
ALPHABET OF LIGHT

Big - Bjarke Ingels Group



NUMBER:

Number	Code	Power consumption	Lumen Delivered	Efficacy (lm/W)	Qty
0	<input type="checkbox"/> 1200000A	27W	1871lm	69.3	
1	<input type="checkbox"/> 1200100A	23W	1436lm	62.4	
2	<input type="checkbox"/> 1200200A	28W	1871lm	66.8	
3	<input type="checkbox"/> 1200300A	24W	1511lm	62.9	
4	<input type="checkbox"/> 1200400A	23W	1436lm	62.4	
5	<input type="checkbox"/> 1200500A	29W	1941lm	66.9	
6	<input type="checkbox"/> 1200600A	25W	1656lm	66.2	
7	<input type="checkbox"/> 1200700A	19W	1221lm	64.3	
8	<input type="checkbox"/> 1200800A	33W	2301lm	69.7	
9	<input type="checkbox"/> 1200900A	25W	1656lm	66.2	



Data for standard 3000K 80CRI on 24VDC. Efficiency: 69%

FEATURES:

Construction : Illuminated tubes in opaque injection molded PMMA. Brushed aluminum support mounts. 360° light emission. Positioning template included. Distance from wall 3 9/16" (9 cm), illuminated tube of ø 2" (5 cm)

Label: - suitable for dry locations

Class: IP20

REMOTE DRIVER:

Driver	Code	Output Power	Dimension	Driver Technology	Qty
<input type="checkbox"/>	AD0200001	20 W	CASE A	ON/OFF 120V OR 277V	
<input type="checkbox"/>	AD0200002	40 W			
<input type="checkbox"/>	AD0200003	60 W			
<input type="checkbox"/>	AD0200004	96 W	CASE B	0-10V DIM (120-277V)	
<input type="checkbox"/>	AD0200005	96W	CASE C		
<input type="checkbox"/>	AD0200006	96W (2x)			

Max wire length between driver and letter is 15ft (4.5m) using 18AWG

