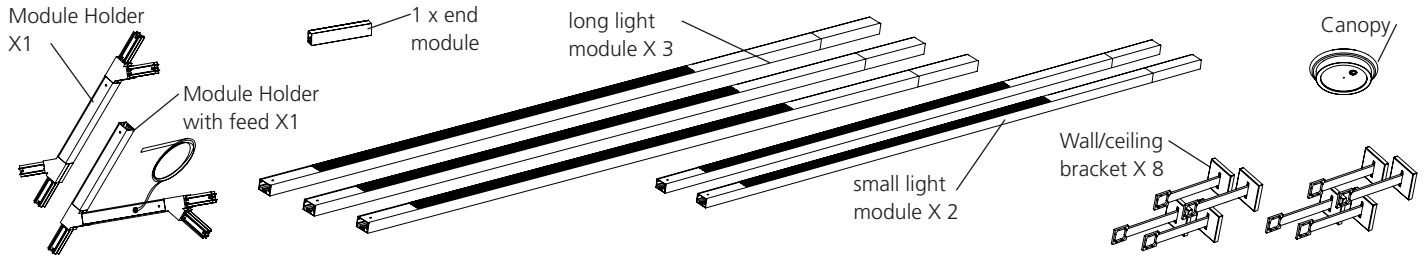




**Attention:** Read and understand these instructions before installing fixture. This fixture is intended for installation in accordance with National Electric Code and local regulation: To assure full compliance with local codes and regulations, check with your local electrical inspector before installation. This equipment is guaranteed only when used as indicated in these instructions; Therefore they should be kept for future reference. To prevent electrical shock, turn off power supply before carrying out any connection or maintenance operations.

Make sure you have all the elements of the fixture. Your box should contain the following parts;

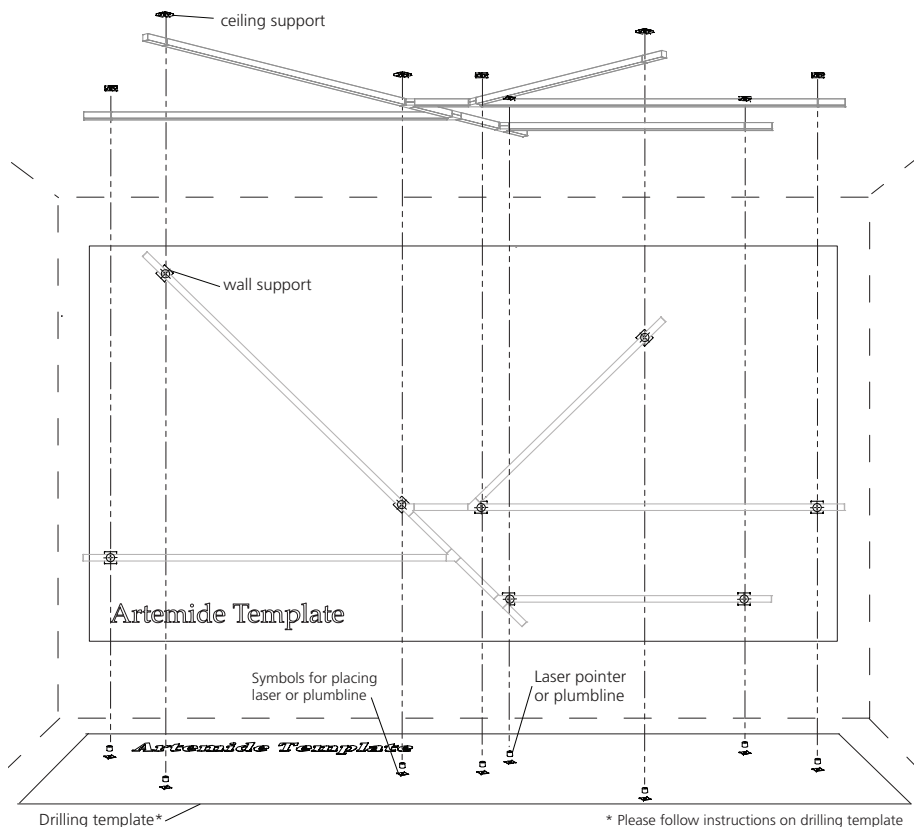


## STEP 1

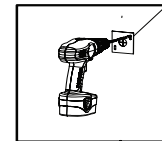
Using the drilling template (Included with fixture), mark the fixing points on the ceiling with a laser pointer or plumbline.  
**Note:** Drilling template only valid with standard light module lenght configuration.

## STEP 2

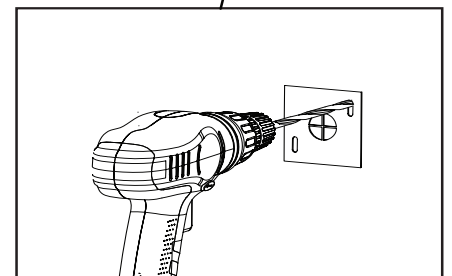
Drill the two appropriate holes per wall bracket as shown in the drilling template.



Symbols for placing support

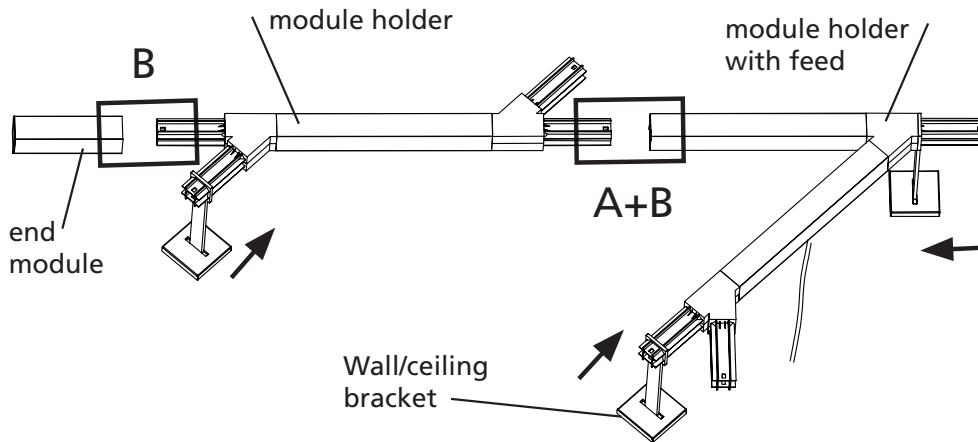


Drilling stencil\*



**STEP 3**

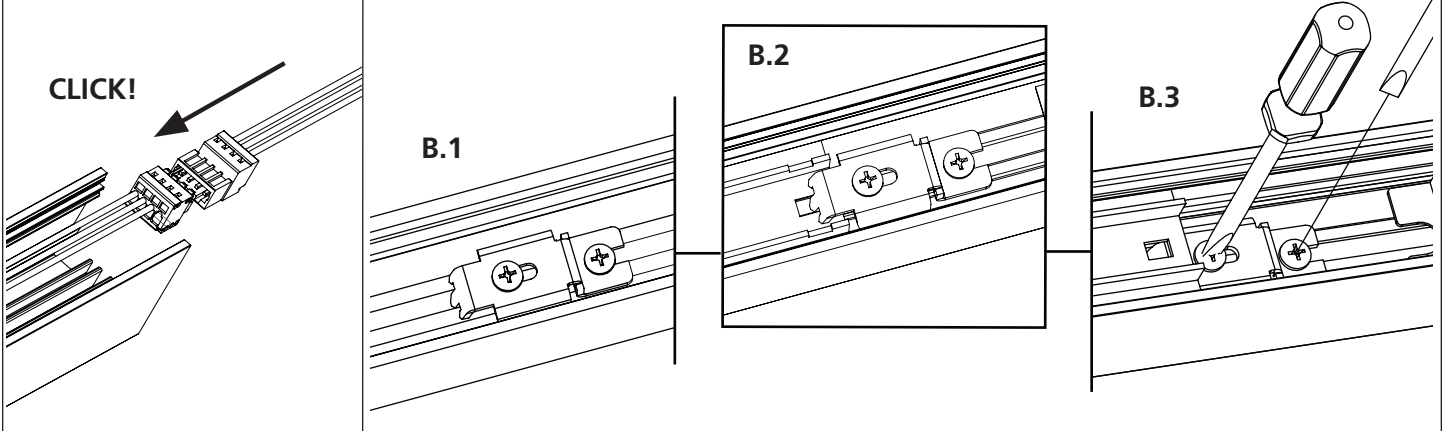
Assembly of the central module structure, electrical connection + module holder + support bracket



**A ELECTRICAL CONNECTION**

**B MODULE HOLDER**

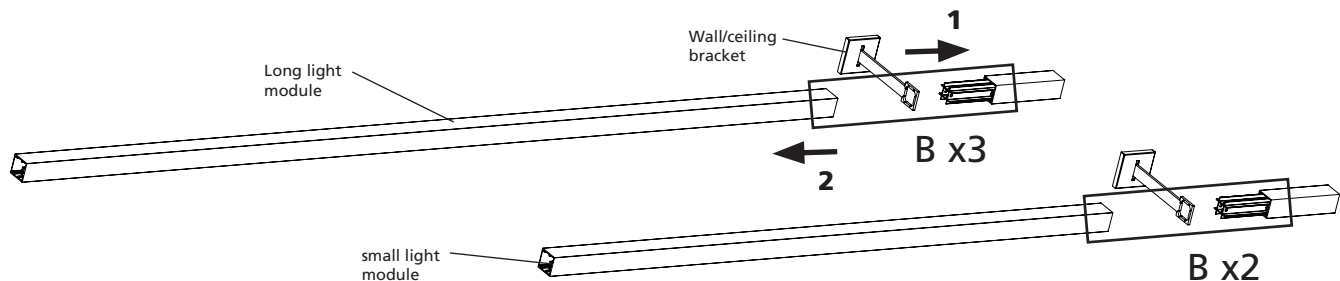
1. Remove cover and Loosen screws of bracket.
2. Insert joiner in arm by locking the tooth in the joiner hole.
3. Screw tightly the bracket and clip back the cover.



**STEP 4**

Assembly of all the long module, wall/ceiling bracket + module long module (STEP B)

Note: For different light orientation see STEP 9 (optional)

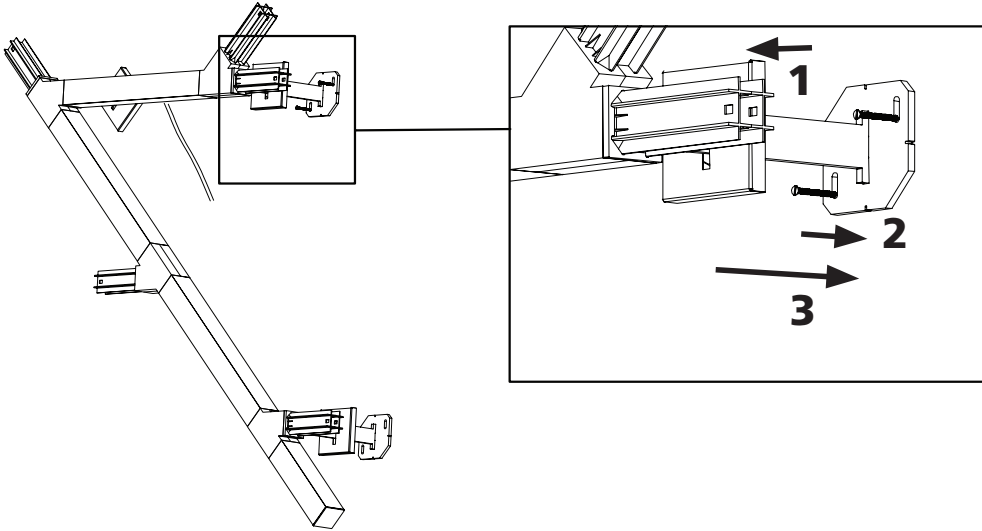




**STEP 5**

Fix the Parts assembled to the wall/ceiling through the support brackets

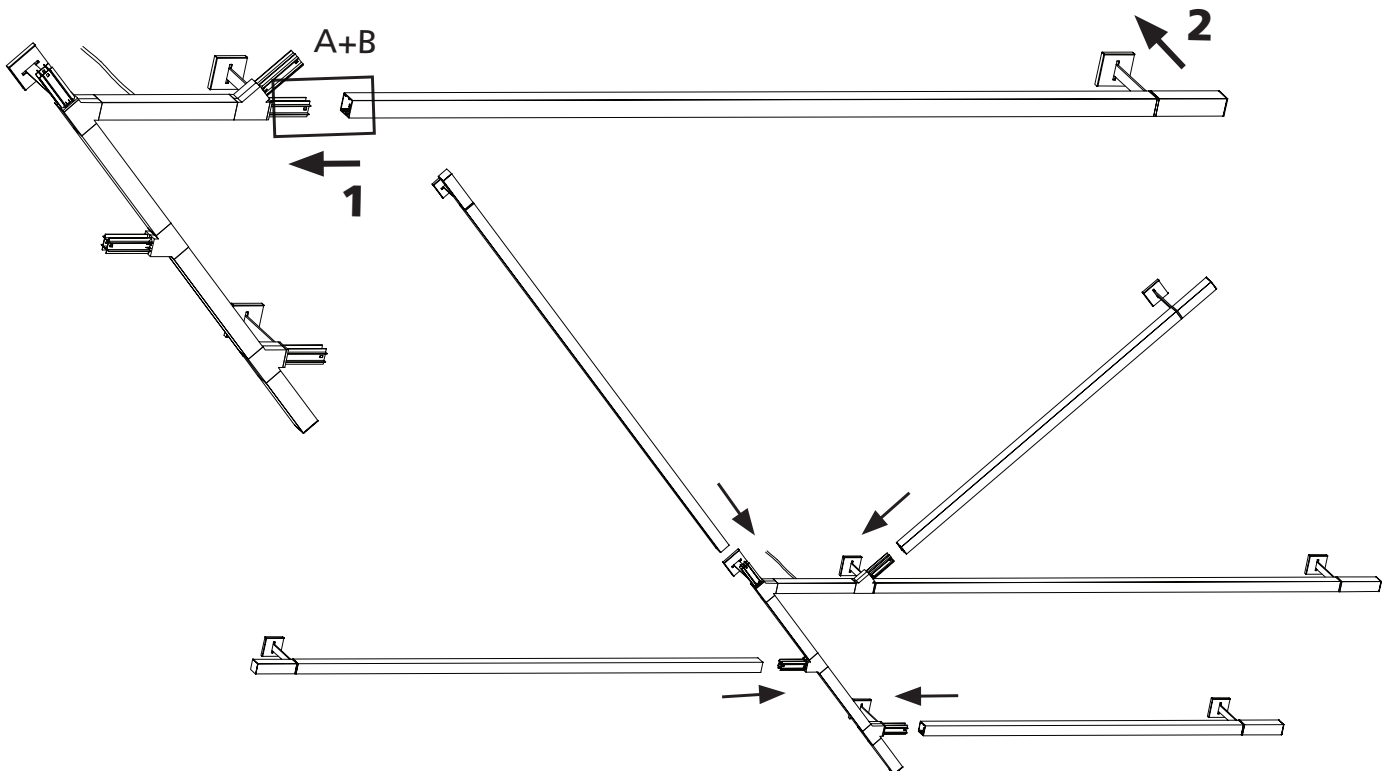
1. Remove the wall bracket cover
2. Screw the two screws in holes made in STEP '2
3. Replace the wall/ceiling magnetic bracket cover



**STEP 6**

Assemble all the parts together

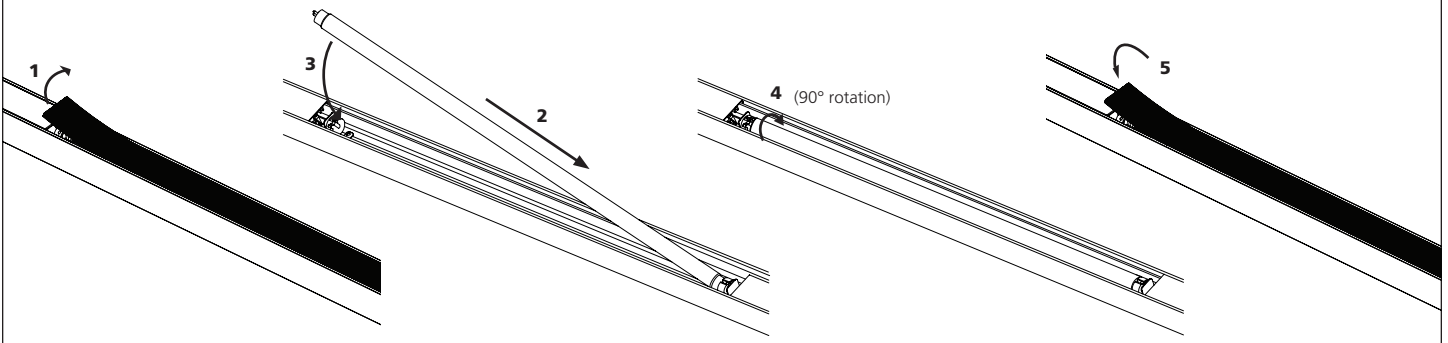
1. Fix the three long & two small light module to central holder. See STEP A+B
2. Fix the wall brackets of the lighting parts to the wall or ceiling as per STEP'5





**STEP 7**

Installation of the lamp for fluorescent luminaire

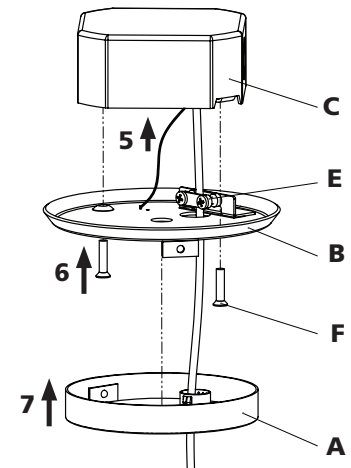
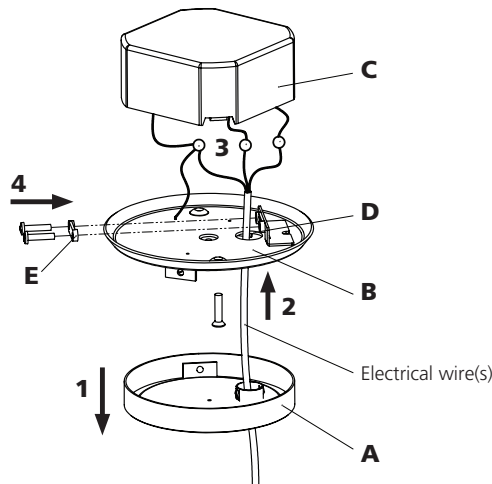


**STEP 8**

Fix the electrical wires and canopy

1. Remove part A
2. Pass Electrical wire(s) through part A and B and cut electrical wire(s) to required length
3. Make the appropriate electrical connections
4. Screw part E after connecting wires

5. Push the wires inside part C
6. Screw part B to part C
7. Clip part A to part B



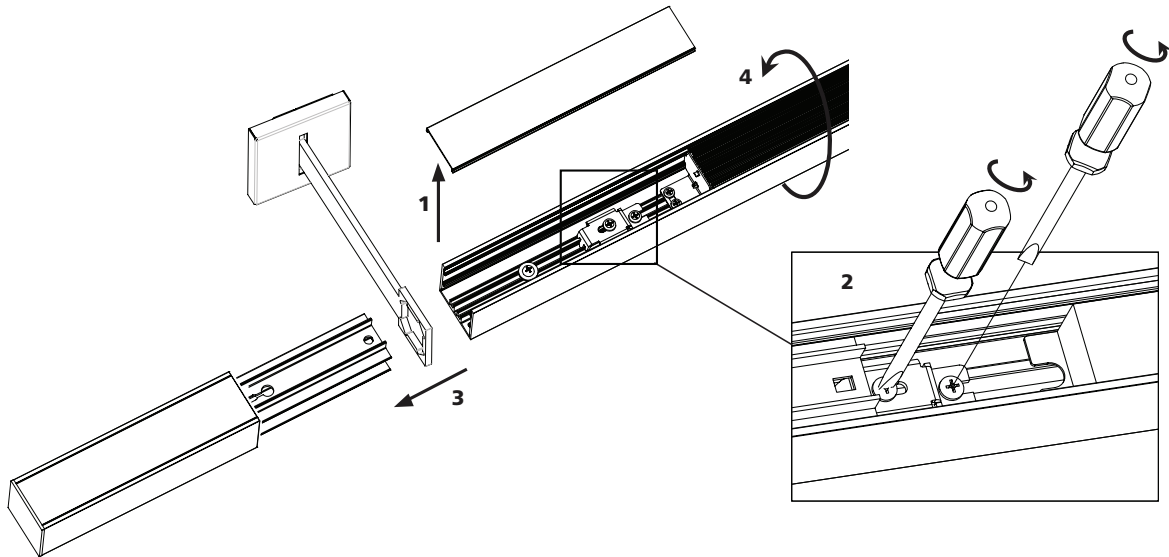
Codes Ending by (CI)		Codes Ending by (ES,H3)		Codes Ending by (TV)	
ON/OFF Standard		Dimmable - 3 Wires		0-10V Dimmable	
FIXTURE WIRES	CEILING WIRES	FIXTURE WIRES	CEILING WIRES	FIXTURE WIRES	CEILING WIRES
BLACK	BLACK	BLACK	BLACK	PURPLE	0-10VDC +
WHITE	WHITE	WHITE	WHITE	GREY	DC-
GREEN	GREEN	GREEN	GREEN		
		PURPLE	DIM HOT		



**STEP 9**

For different light orientation (optional)  
1. Remove cover to expose bracket.  
2. Loosen screws.

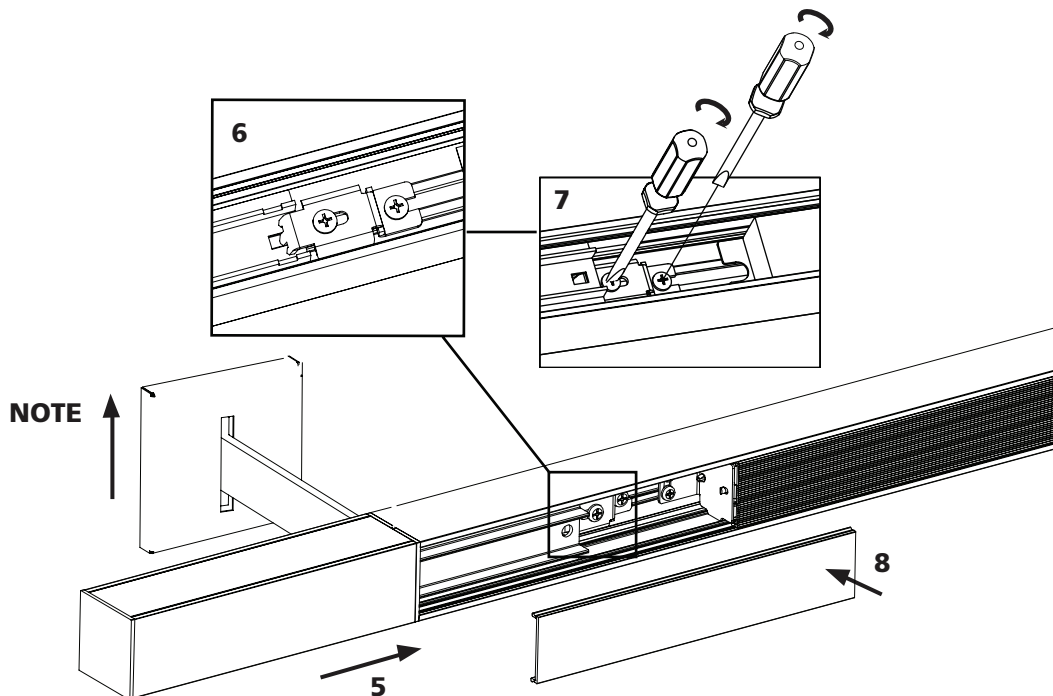
3. Remove end cap.  
4. Flip light module.



5. Insert end cap back in light module  
6. Lock the bracket tooth in the end cap hole.

7. Screw tightly the bracket.  
8. Clip back the cover.

Note : Be sure at the end, that the support bracket is in direction of either the ceiling or the wall.



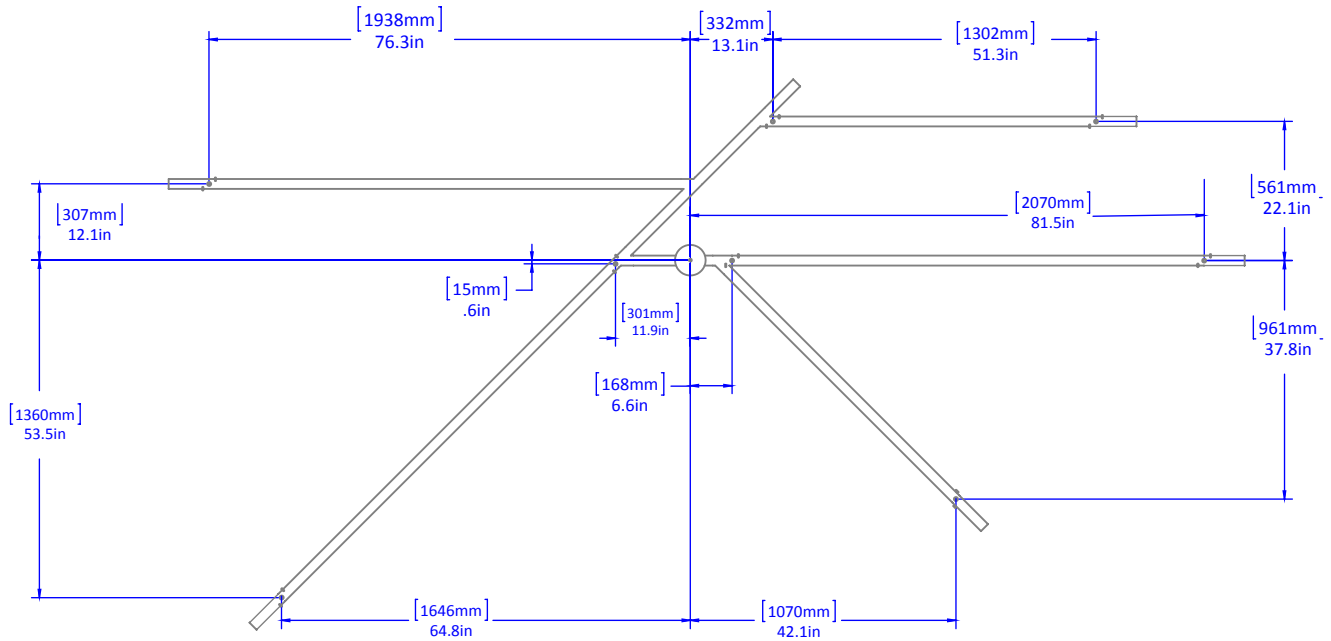


**CEILING FIXING POINT**

CODE: M1131\_8\_00\_C1

CODE: M1131\_8\_00\_TV

[ mm  
in ]



CODE: M1131\_8\_00\_ES

CODE: M1131\_8\_00\_H3

[ mm  
in ]

