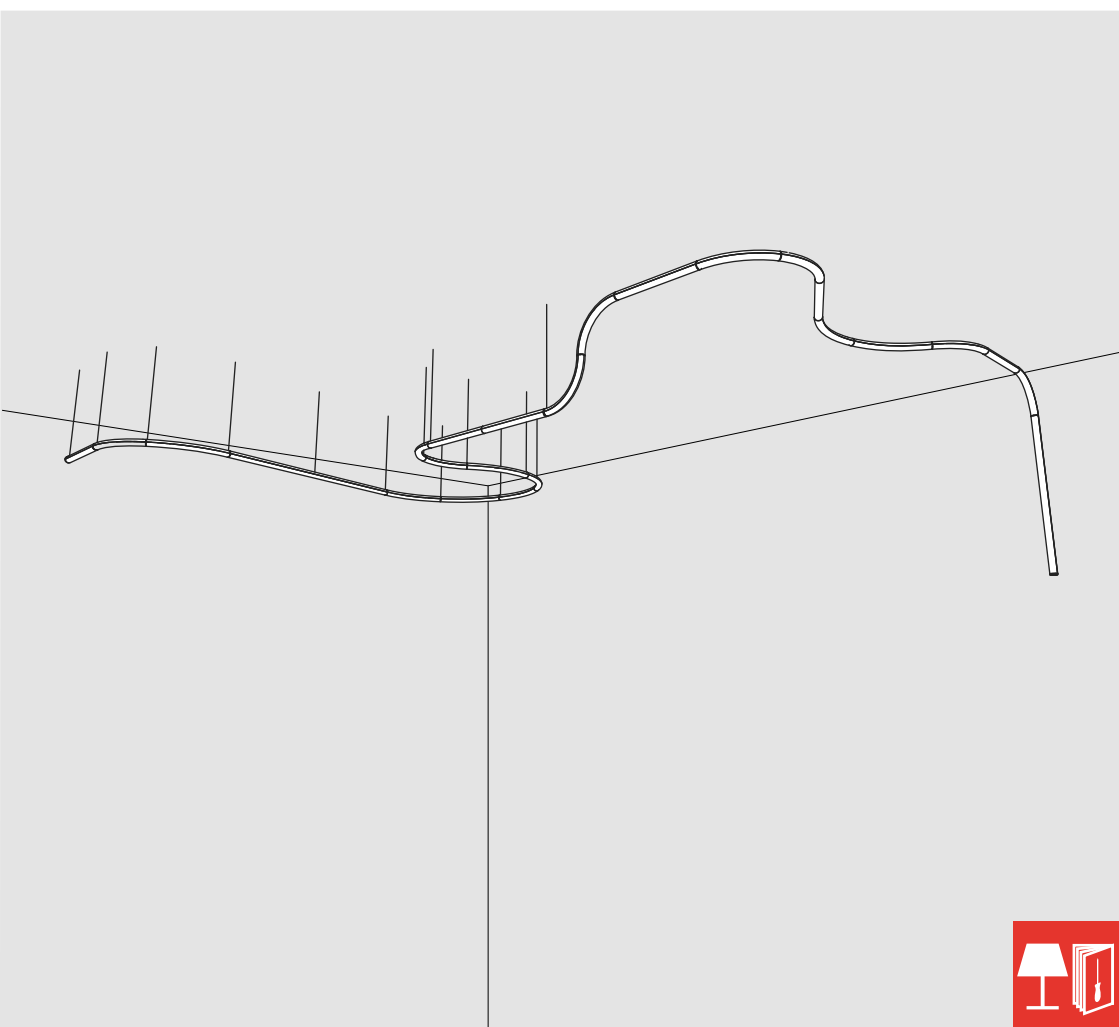


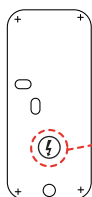
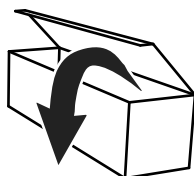
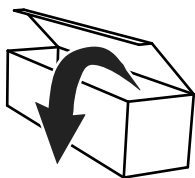
Alphabet of light system

design
BIG

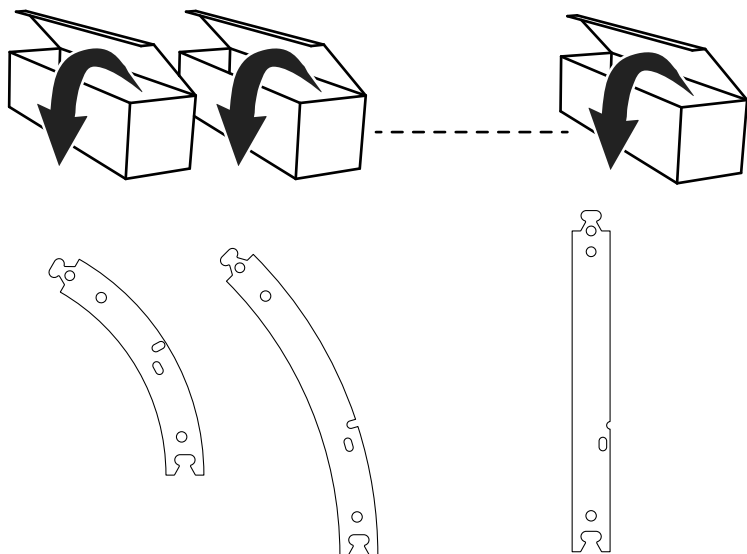
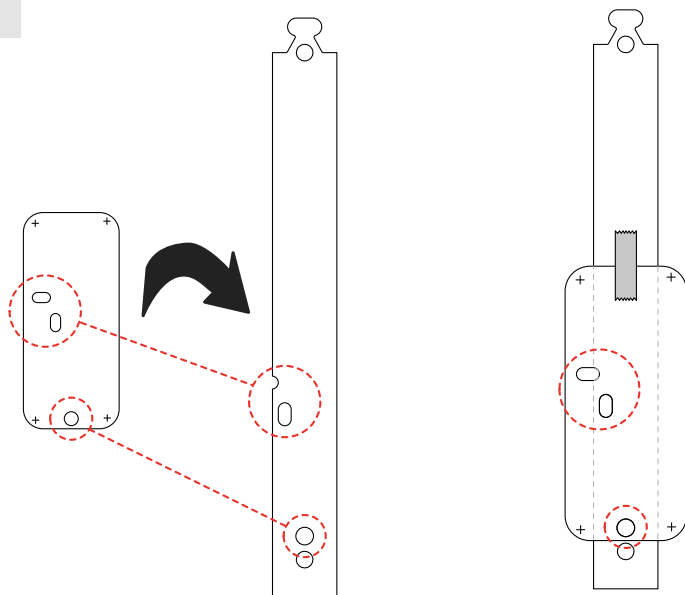




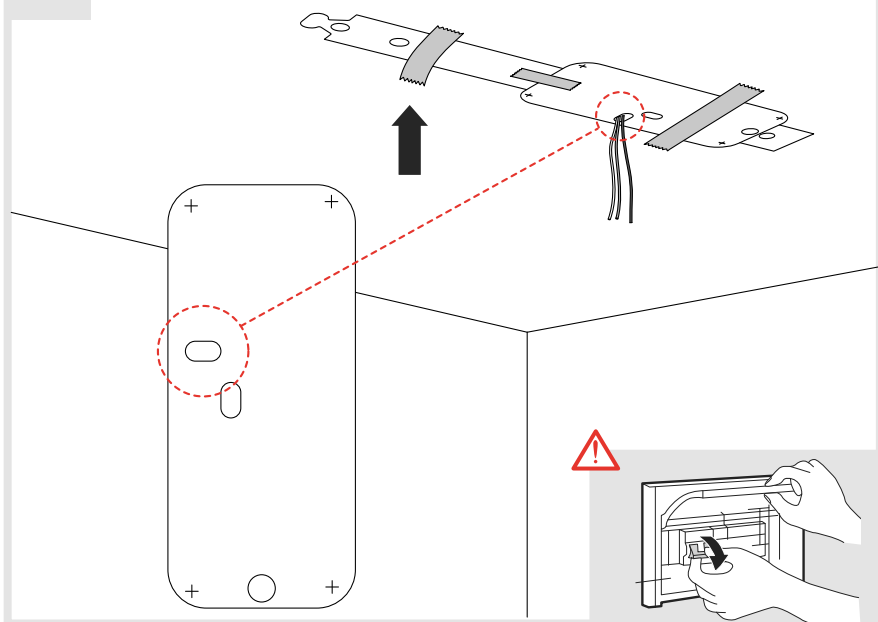
i



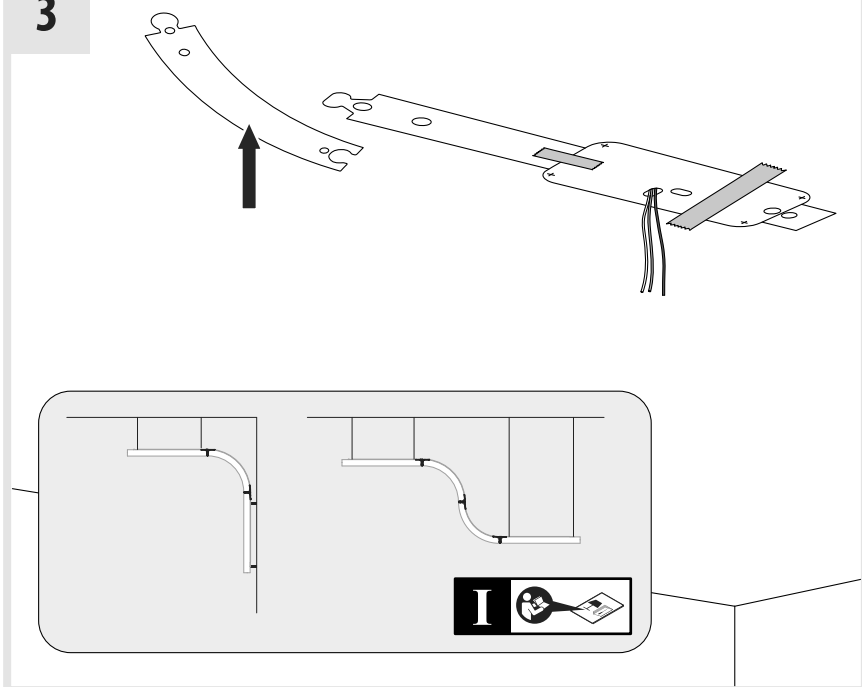
1



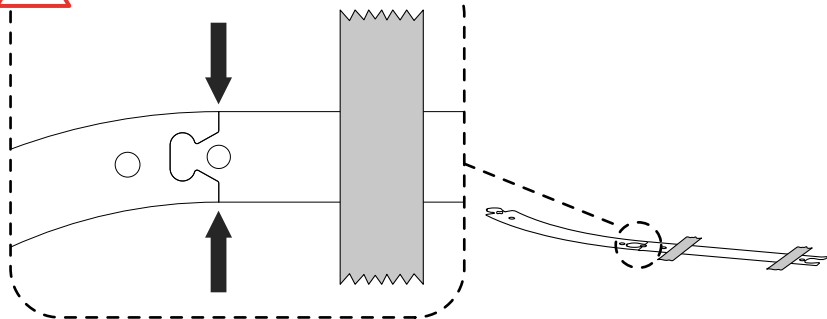
2



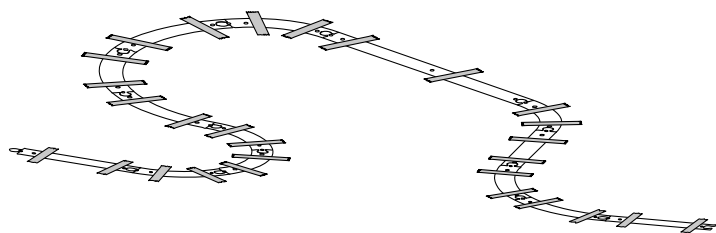
3



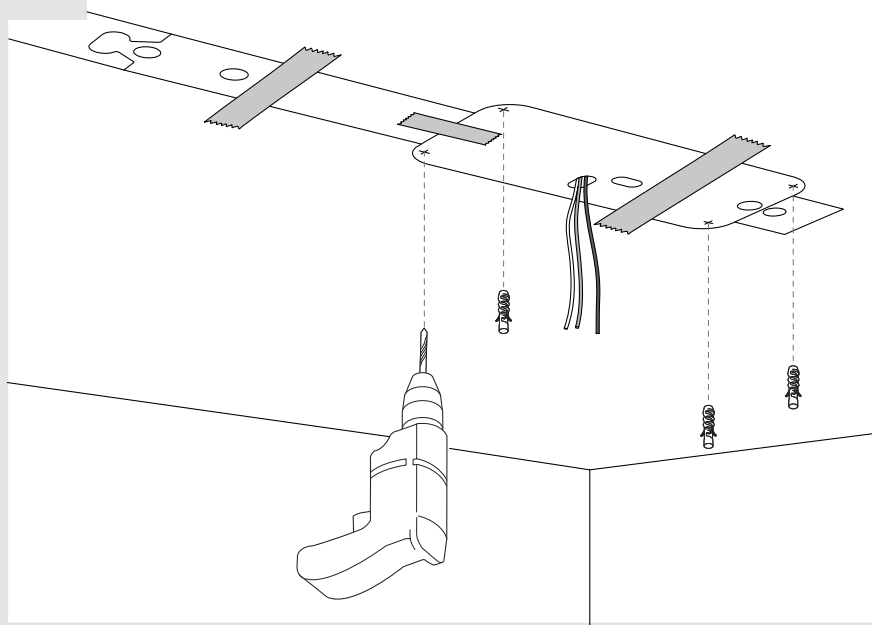
4



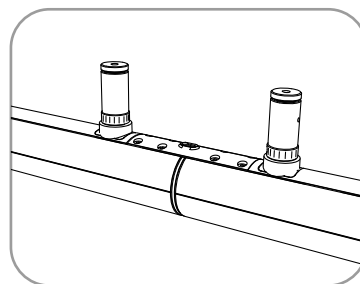
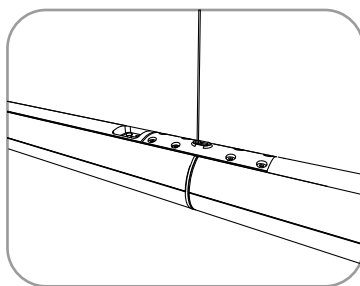
5

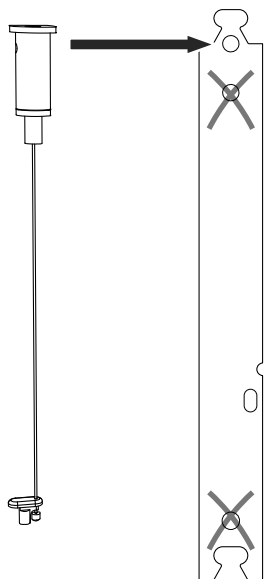
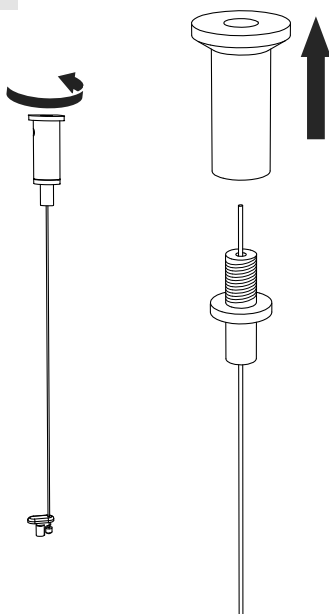
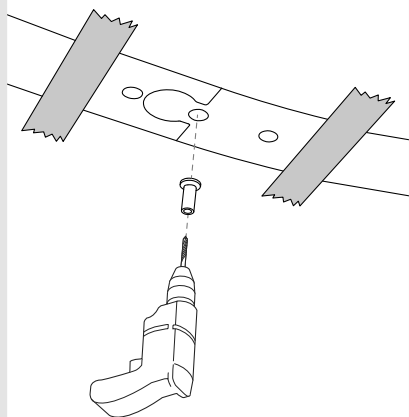
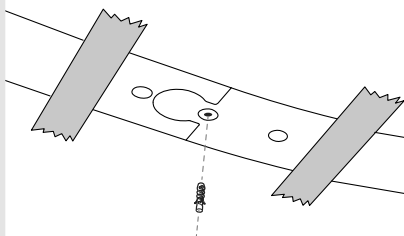


6

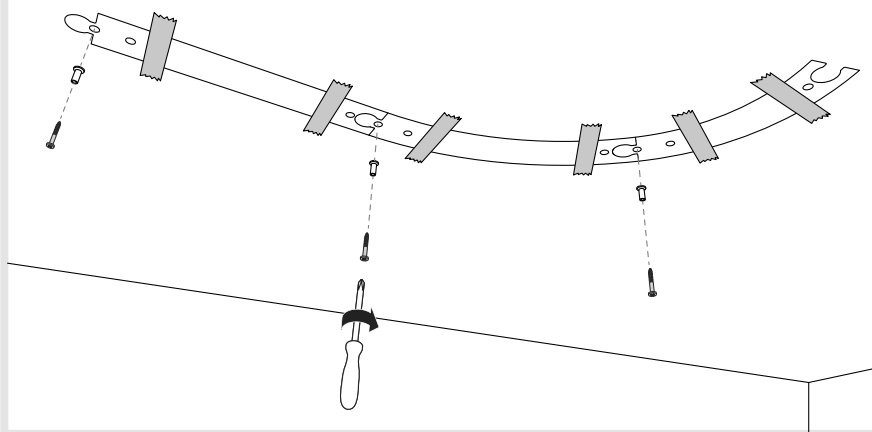


i

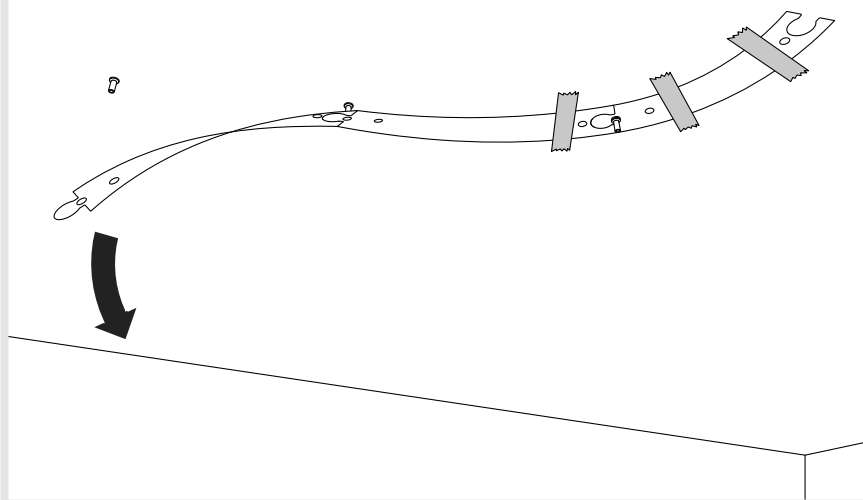


A**A1****A2****A3**

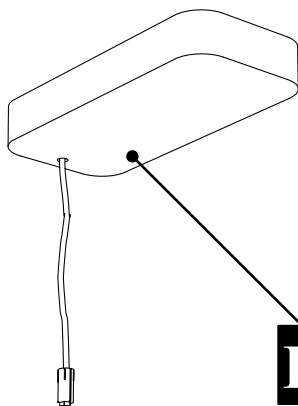
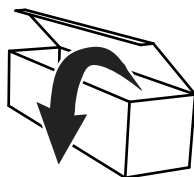
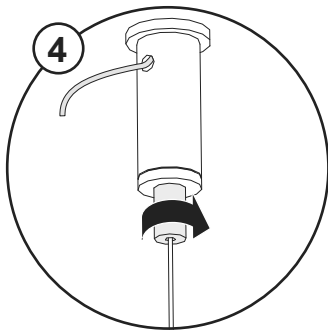
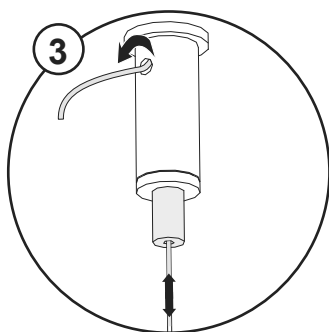
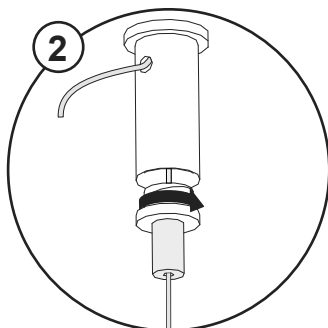
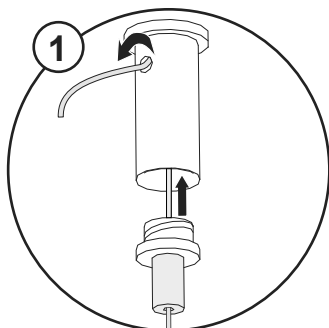
A4

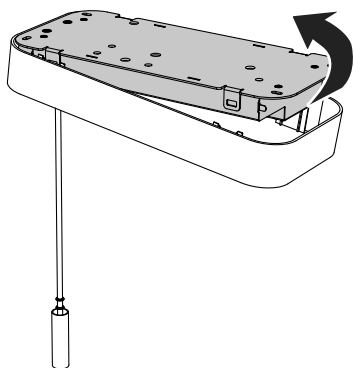
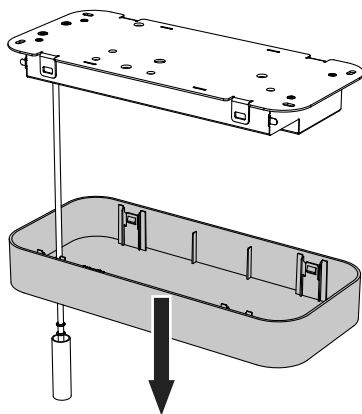
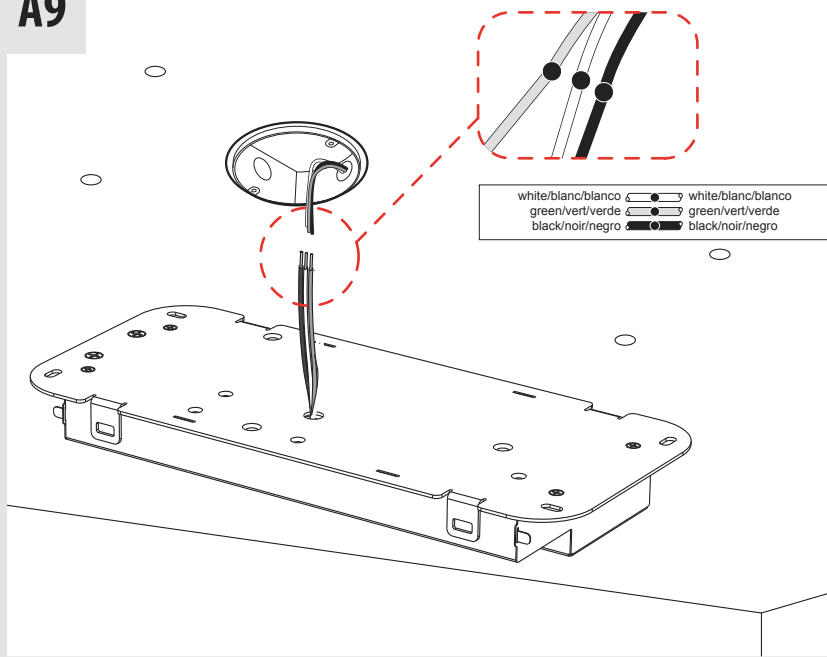


A5



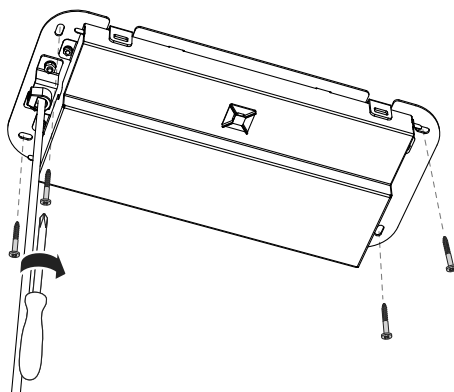
A6



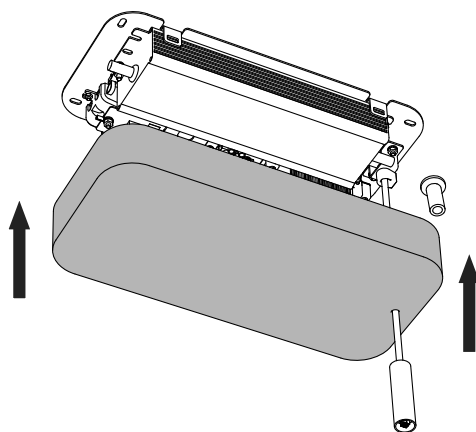
A7**A8****A9**



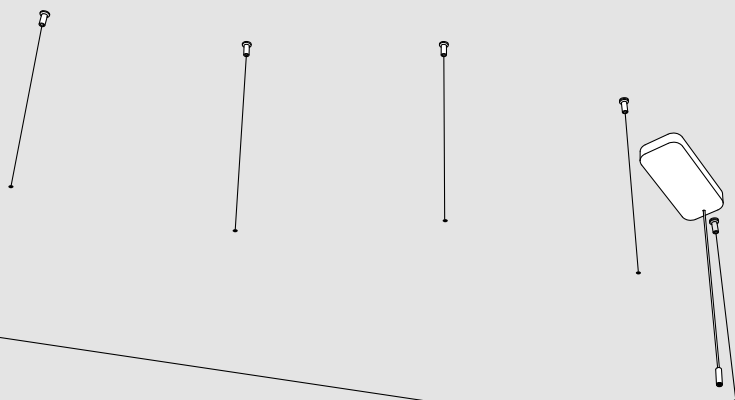
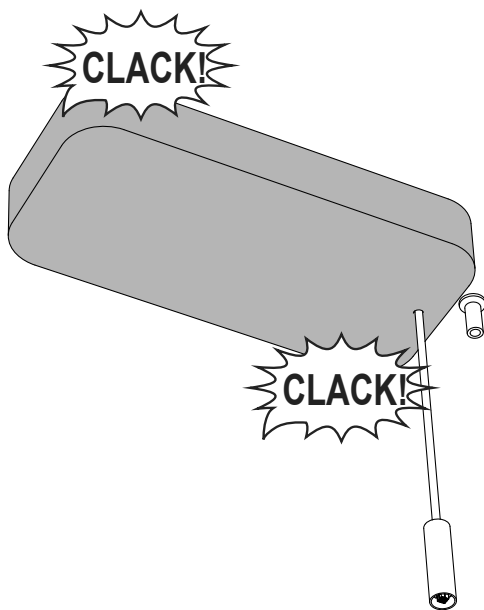
A10

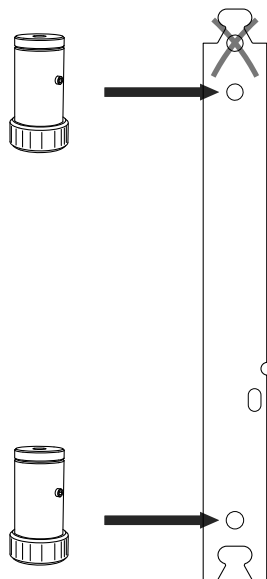
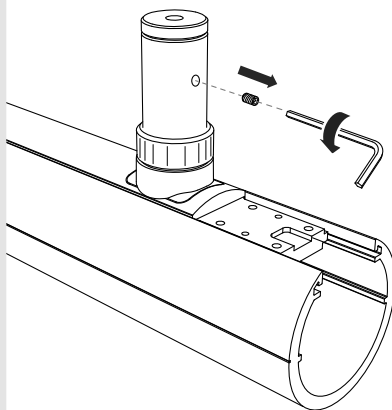
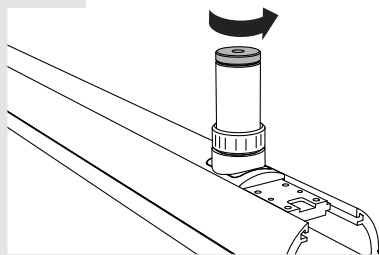
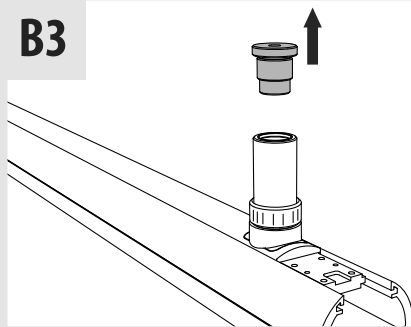
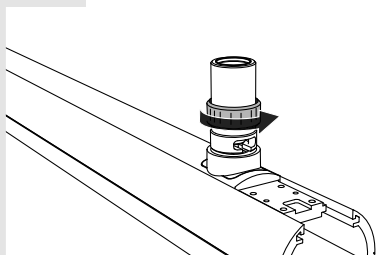
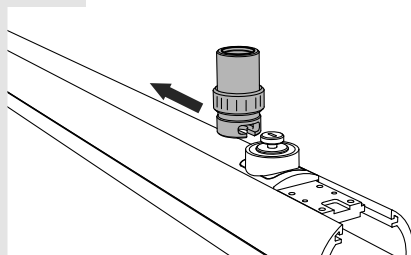


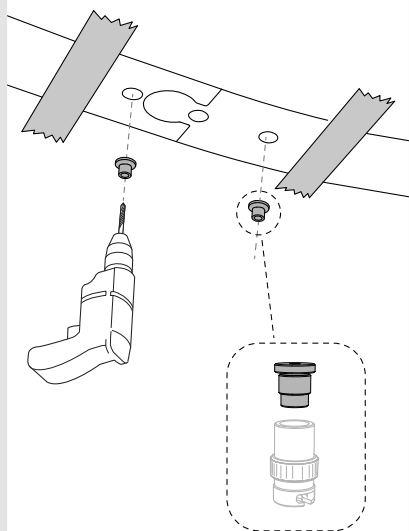
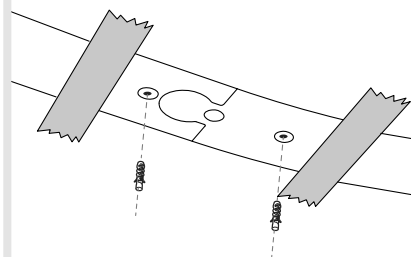
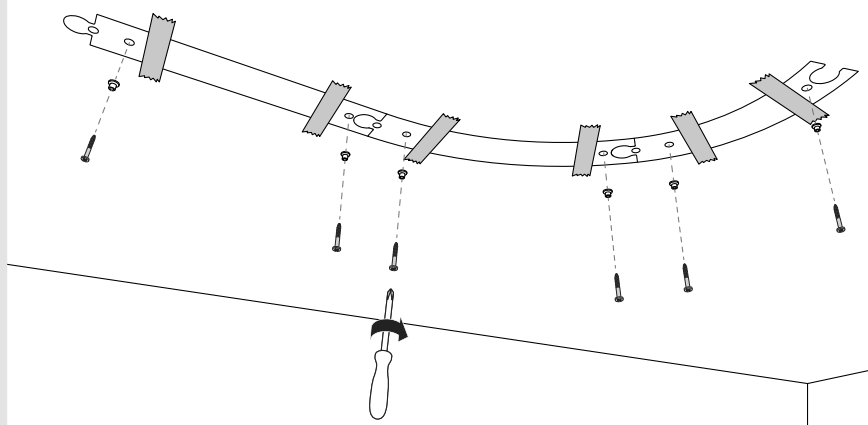
A11



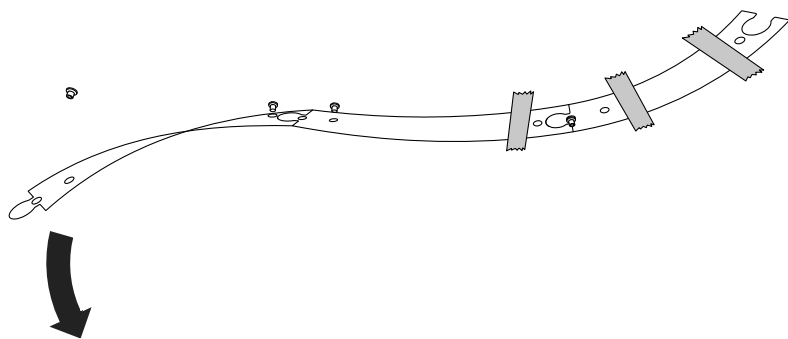
A12



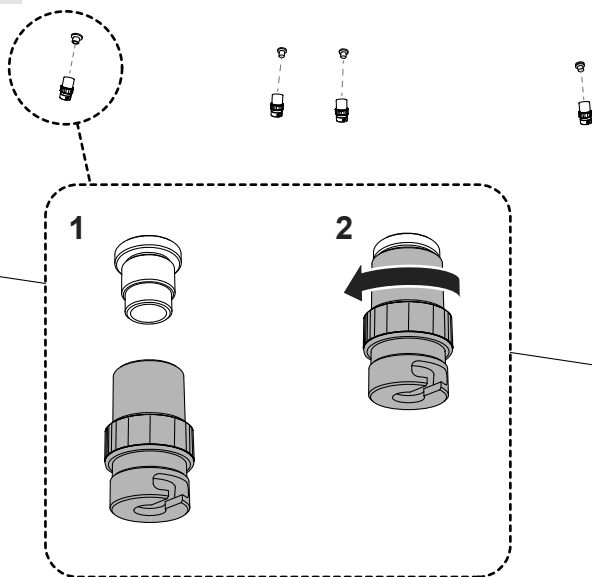
B**B1****B2****B3****B4****B5**

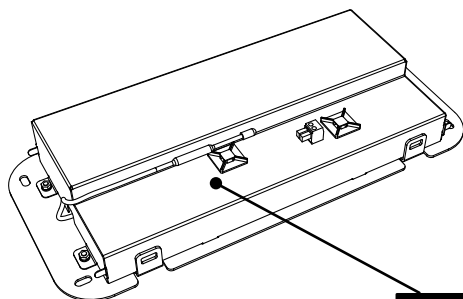
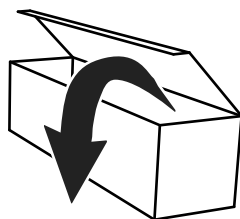
B6**B7****B8**

B9

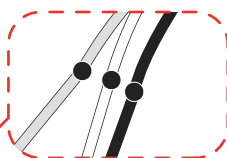
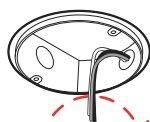


B10

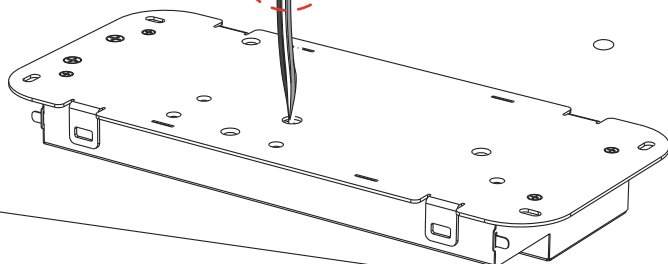




B11

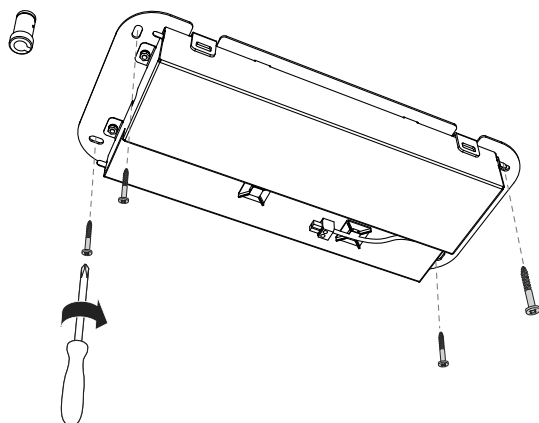


white/blanc/blanco	●	white/blanc/blanco
green/vert/verde	●	green/vert/verde
black/noir/negro	●	black/noir/negro

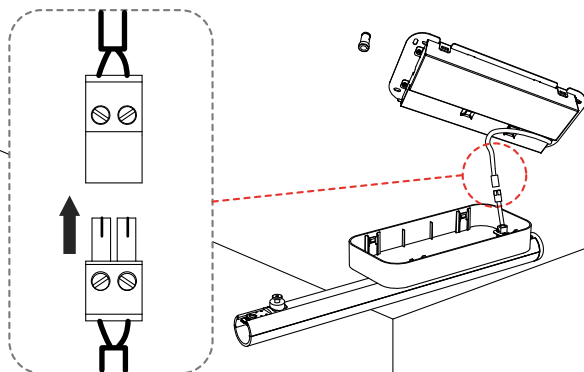




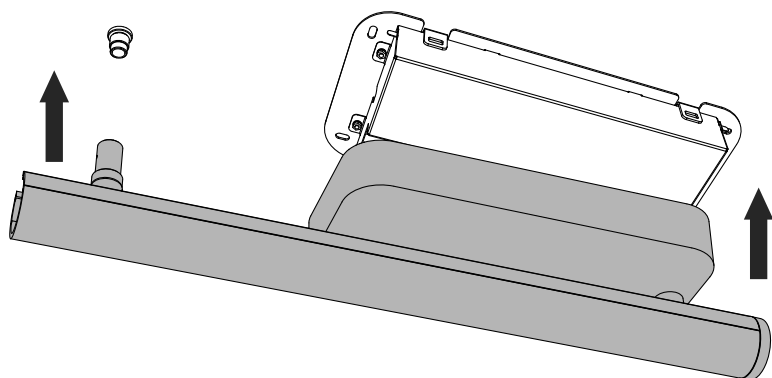
B12



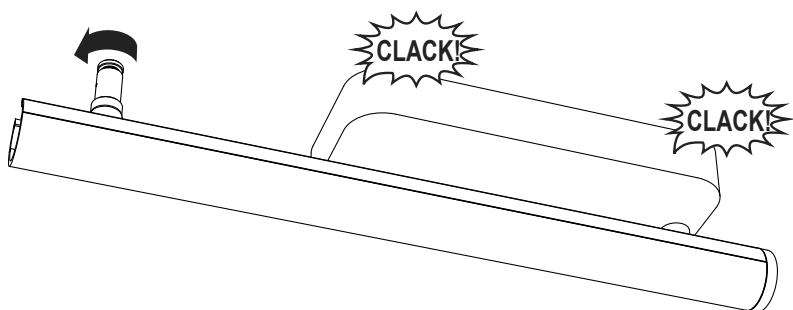
B13

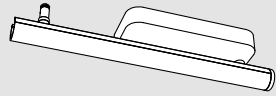


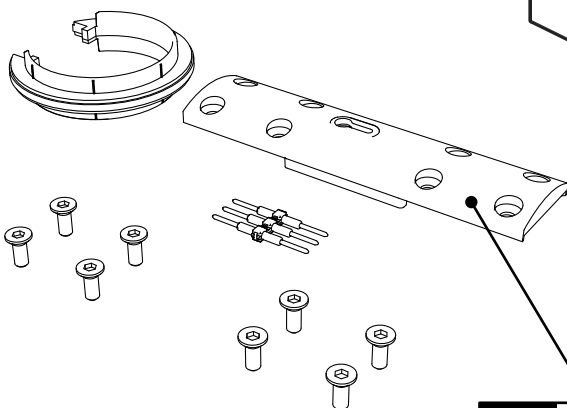
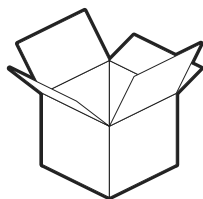
B14



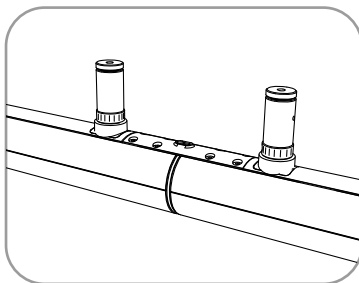
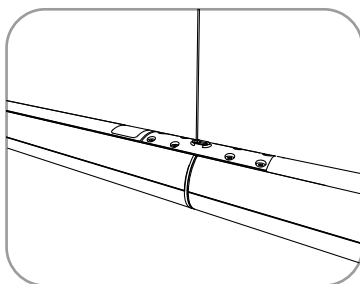
B15



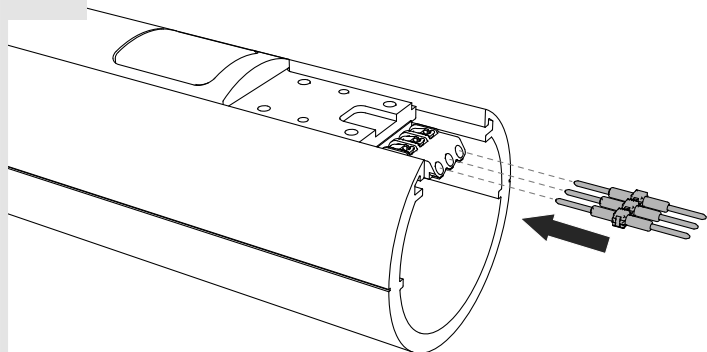




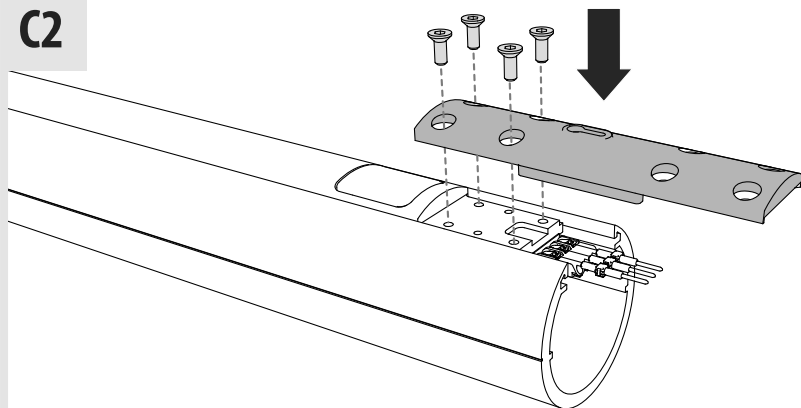
i



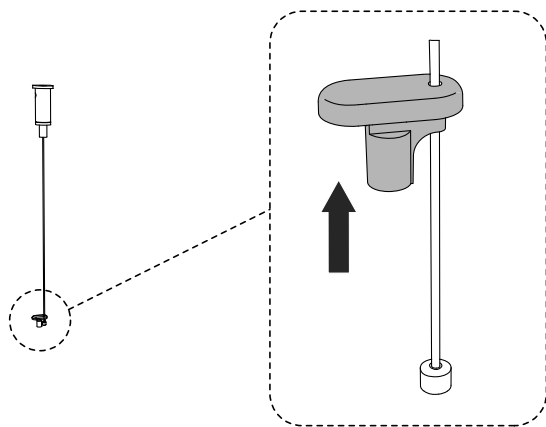
C1



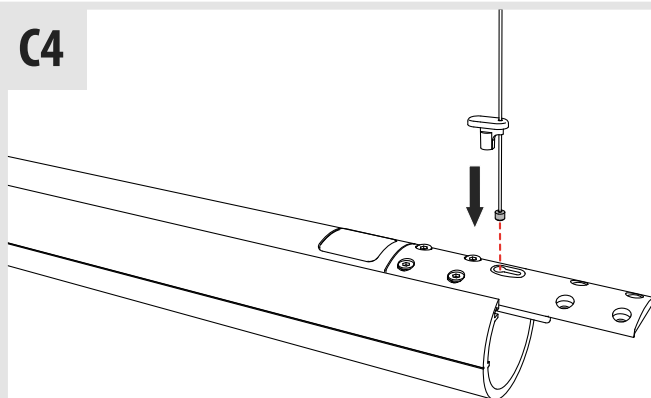
C2



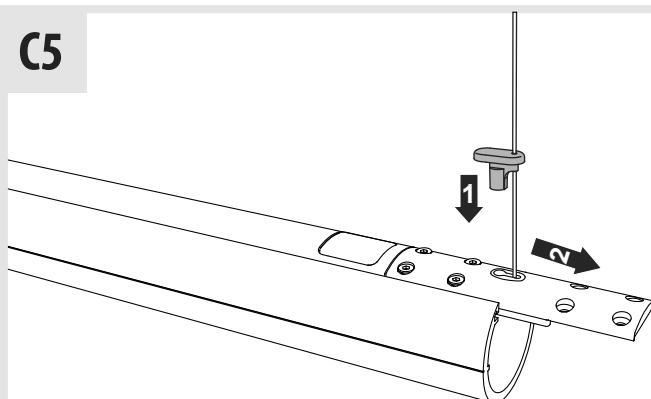
C3



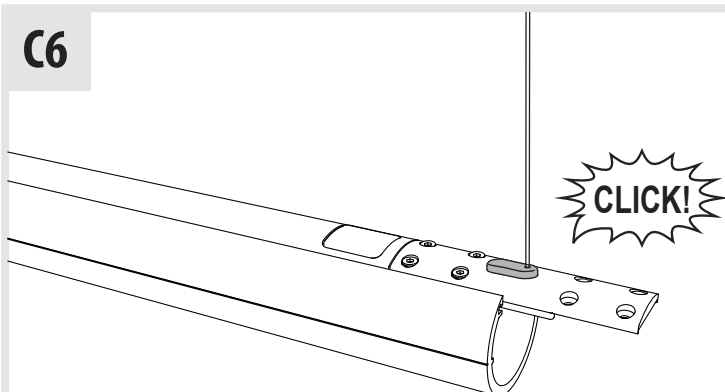
C4



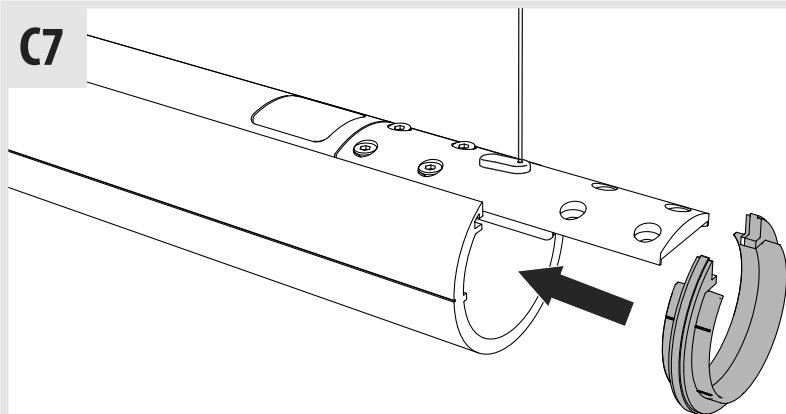
C5



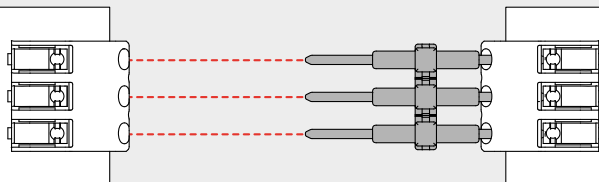
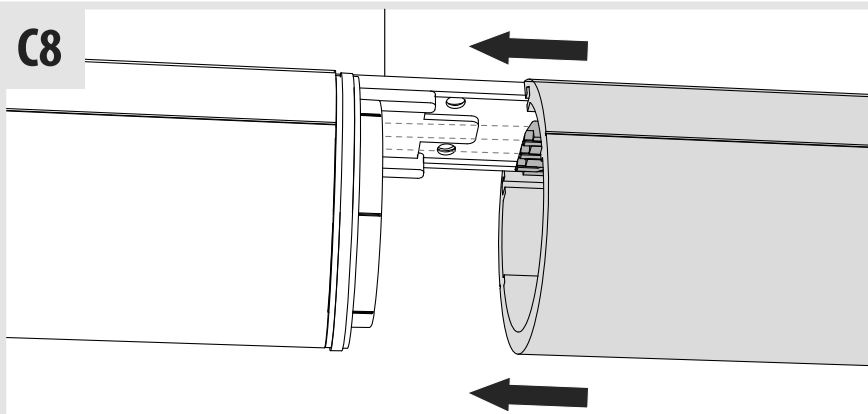
C6



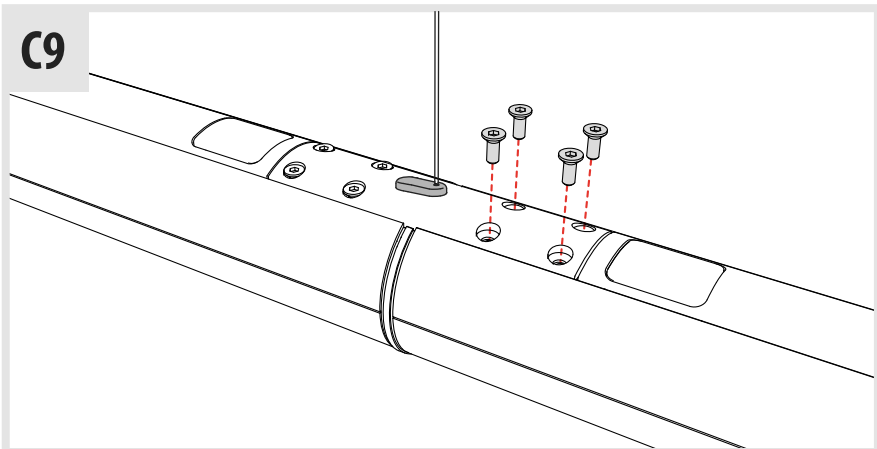
C7



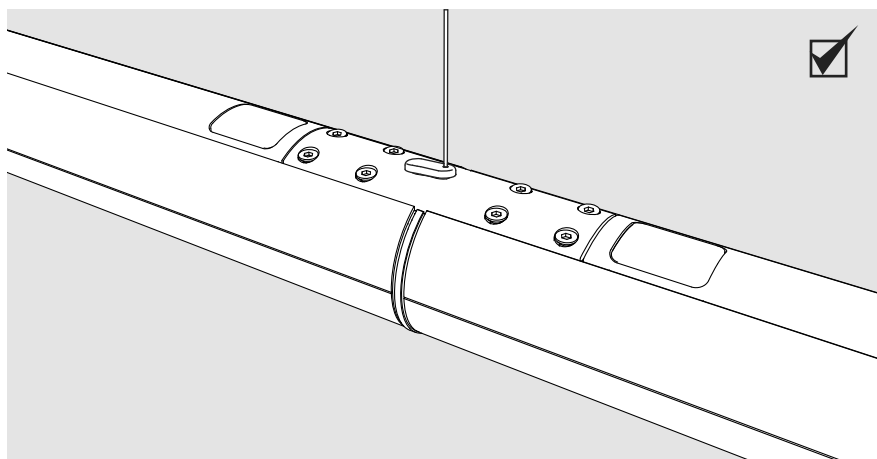
C8



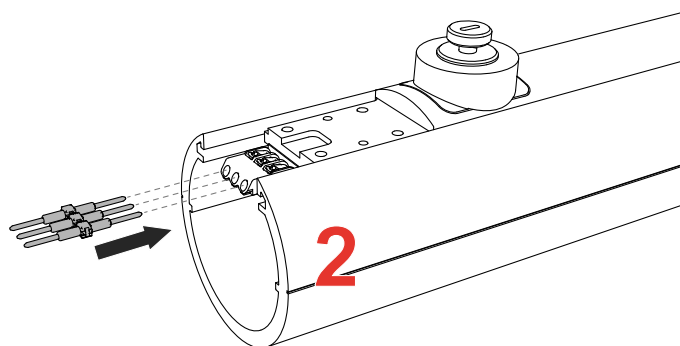
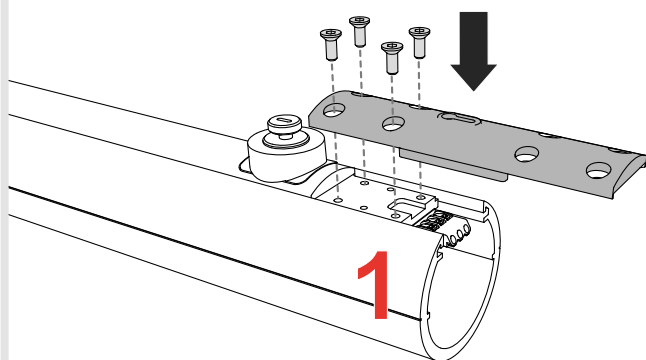
C9



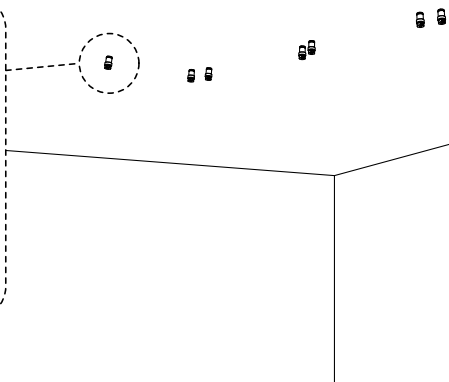
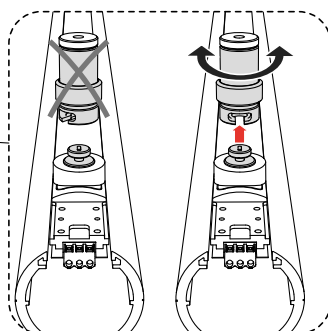
C10



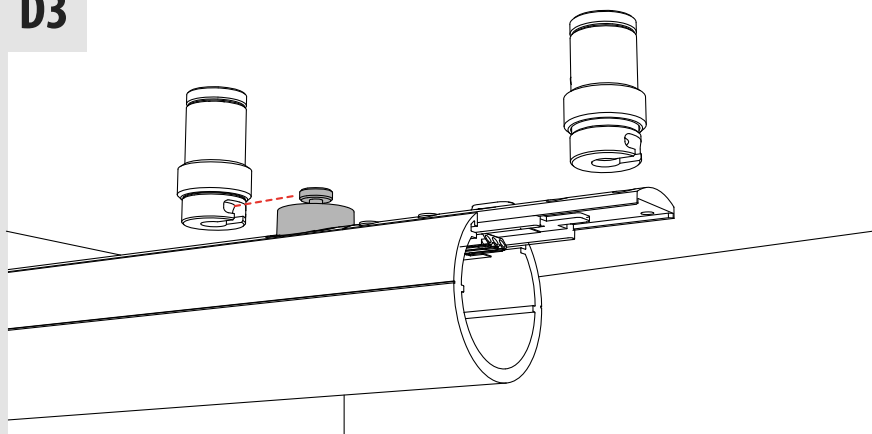
D1



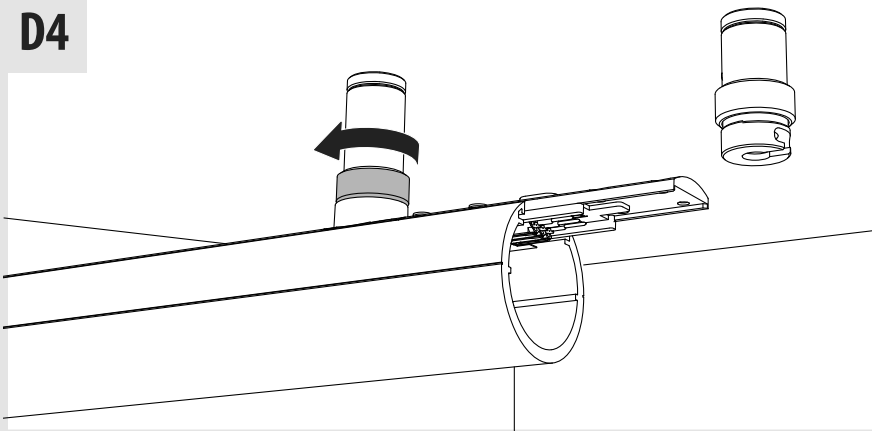
D2



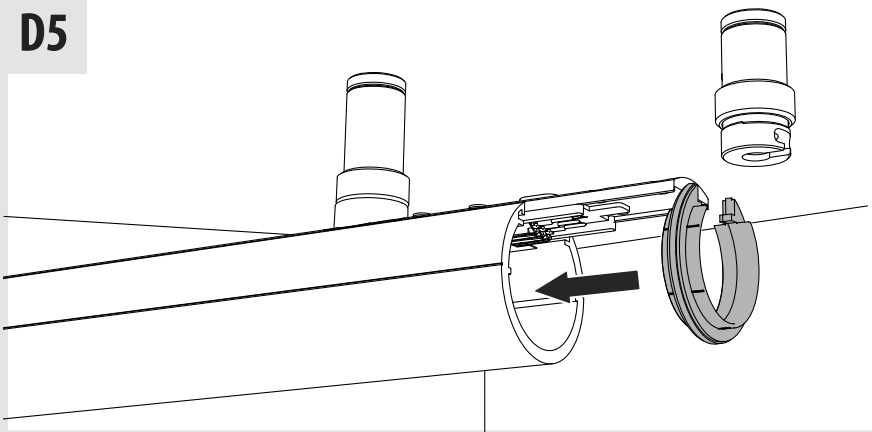
D3



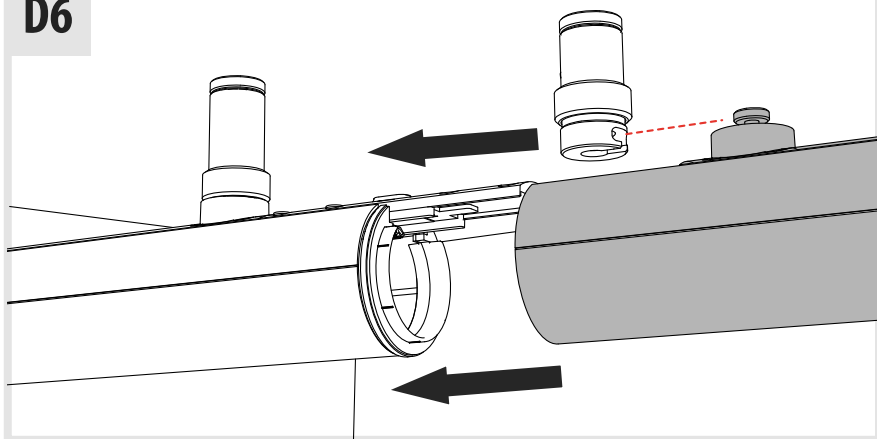
D4



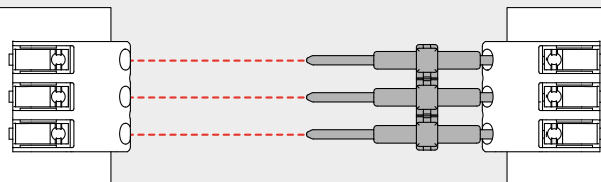
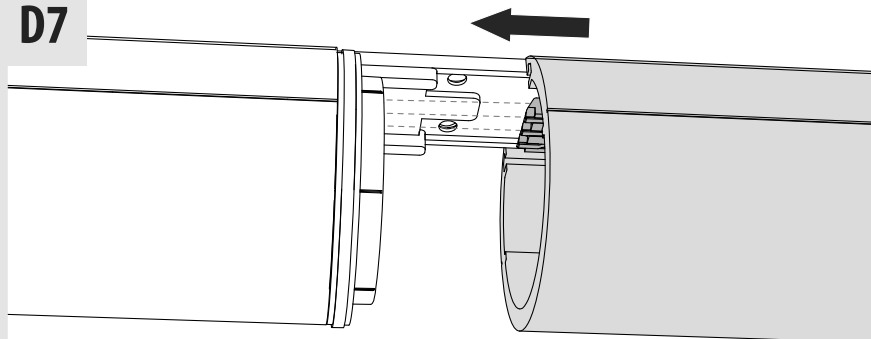
D5



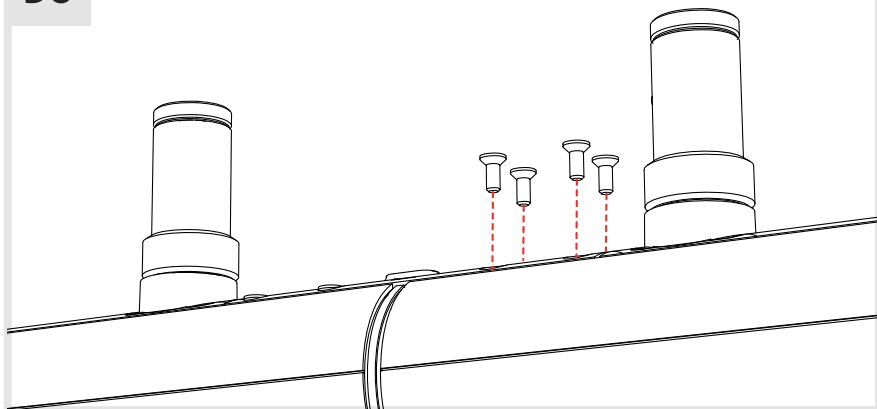
D6



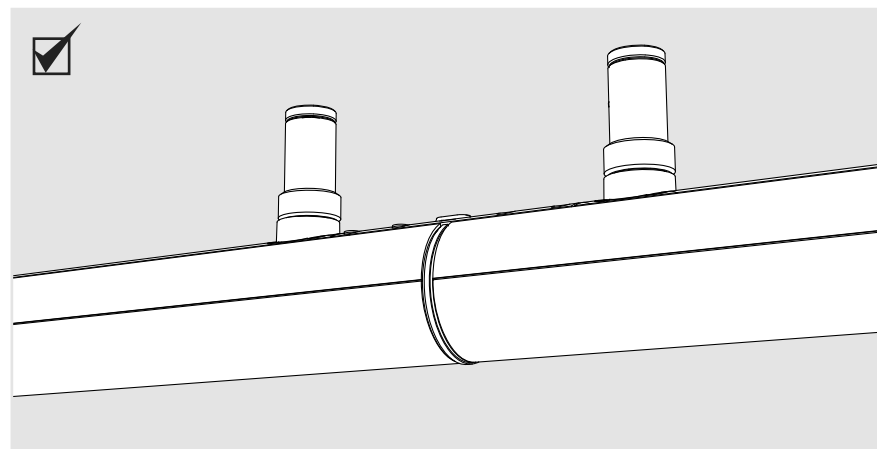
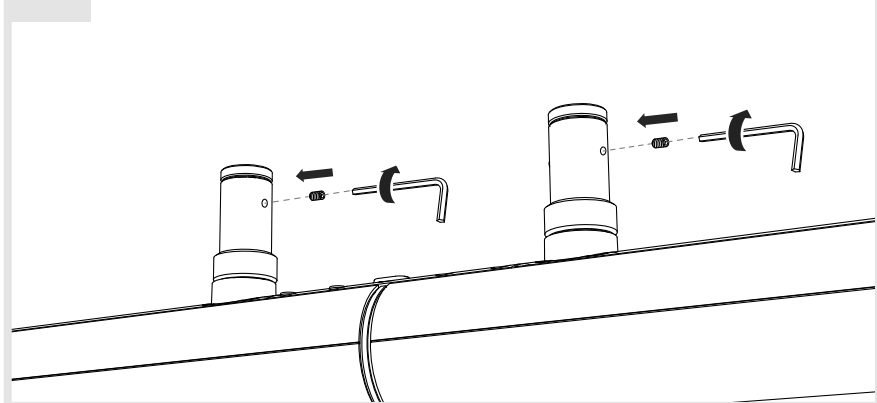
D7



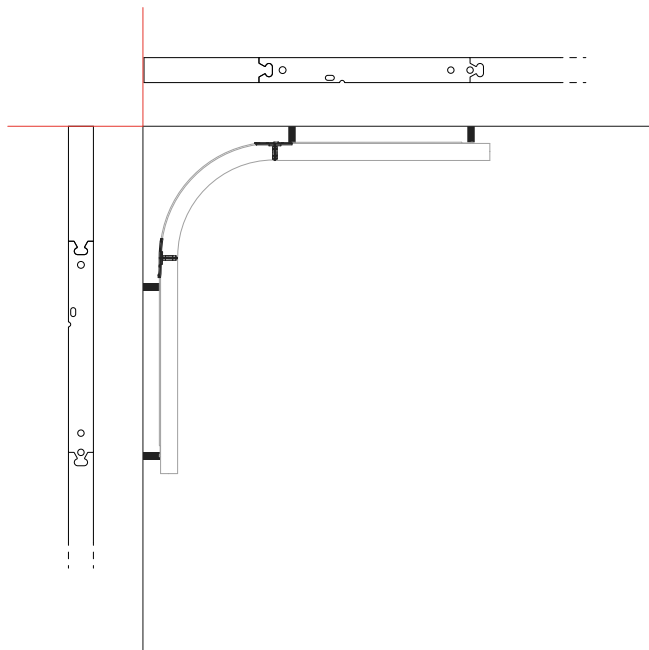
D8



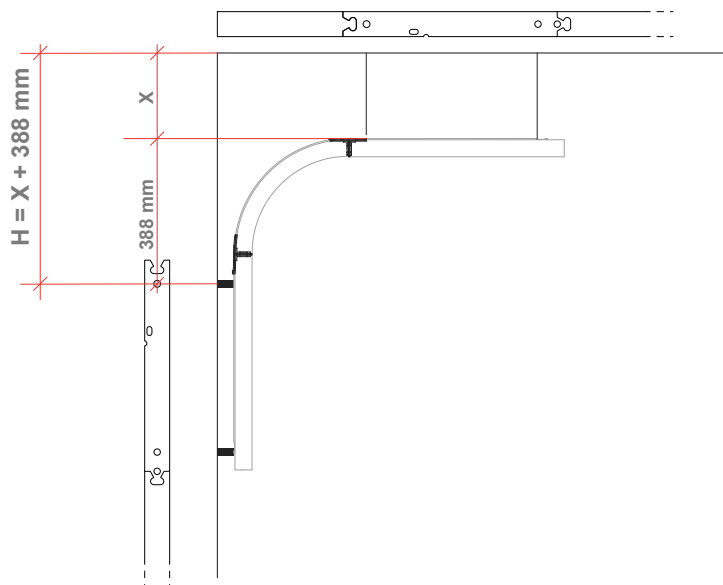
D9



Ia



Ib

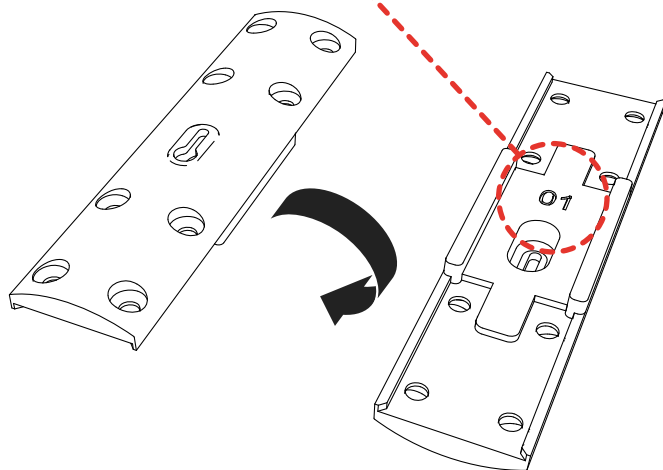


Ic

Technical drawing of a mechanical part, labeled 'Ic'. The drawing shows a top view and a side view. The top view is a rectangle with a semi-circular cutout on the left side. The side view shows the profile of the part, including a vertical section and a horizontal section. The drawing is labeled 'Ic' in the top left corner.

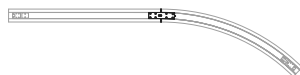


N°01 - COD. 2250010A

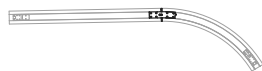




N°03 - COD. 2252010A



N°02 - COD. 2251010A



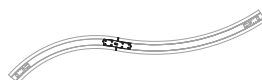
N°05 - COD. 2253010A



N°06 - COD. 2254010A



N°16 - COD. 2258010A



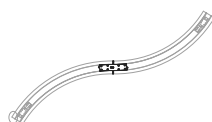
N°08 - COD. 2257010A



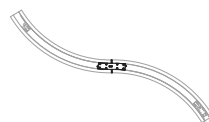
N°07 - COD. 2256010A



N°04 - COD. 2255010A

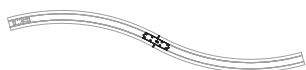


N°10 - COD. 2259010A



N°18 - COD. 2270010A





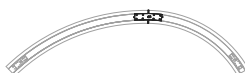
N°17 - COD. 2269010A



N°09 - COD. 2260010A



N°11 - COD. 2261010A



N°12 - COD. 2262010A



N°14 - COD. 2264010A



N°15 - COD. 2265010A

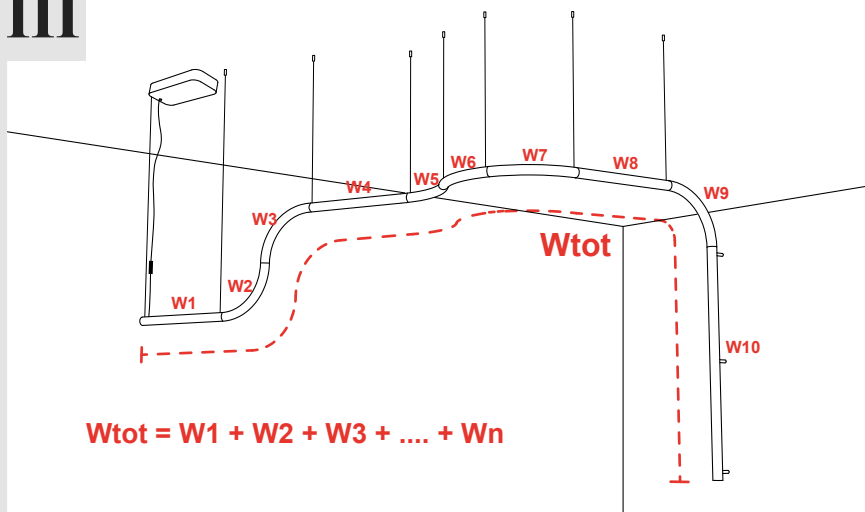


N°01 - COD. 2250010A



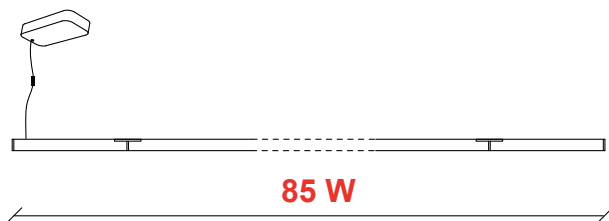
N°13 - COD. 2263010A

III



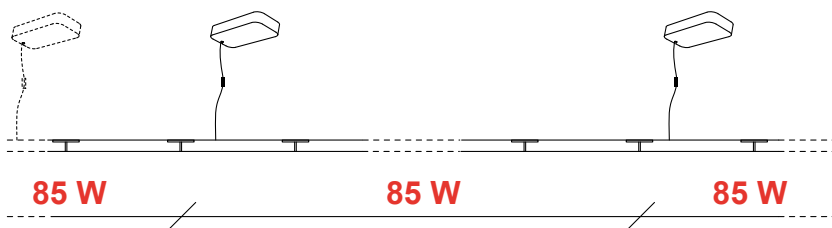
i

$W_{tot} \leq 85 \text{ Watt}$



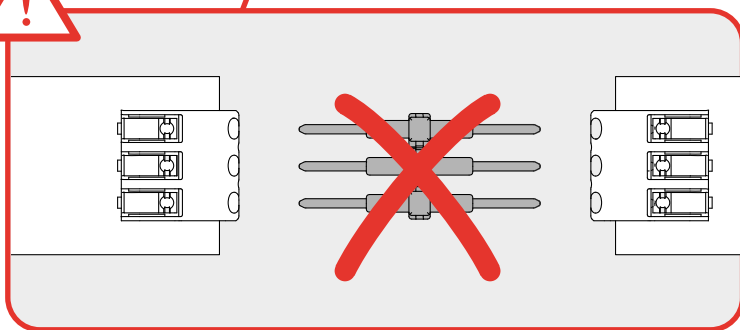
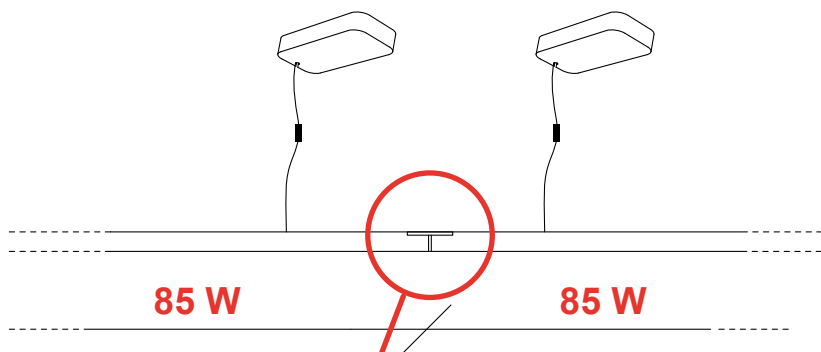
i

$W_{tot} \geq 85 \text{ Watt}$





$W_{tot} \geq 85 \text{ Watt}$



Artemide®



Artemide

via Bergamo, 18
20010 Pregnana M.se (MI)
ITALIA

tel. +39 02 935 181
fax +39 02 935 90 254
fax +39 02 935 90 496

www.artemide.com

VAT IT00846890150

Artemide Inc.

250 Karin Lane
Hicksville, NY 11801

Tel. 631 694 9292
Toll Free 1-877-Art-9111
Fax 631 694 9275

www.artemide.net

Artemide Ltée/Ltd.

11105 rue Renaude Lapointe
Montréal, Québec H1J 2T4

Tel. 514 323 6537
Toll Free 888 777 2783
Fax 514 323 8864

www.artemide.net

cod. Y513001159