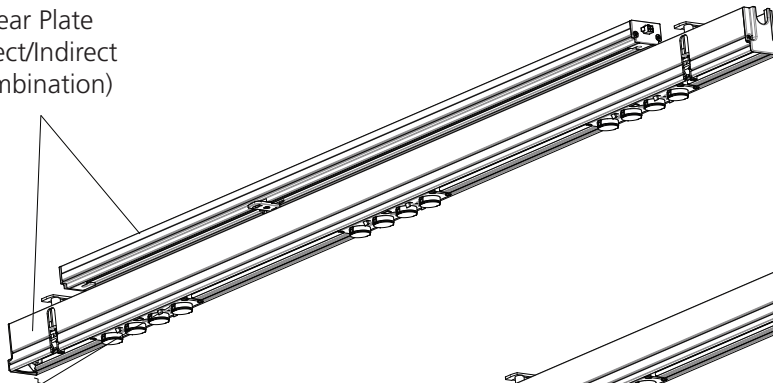




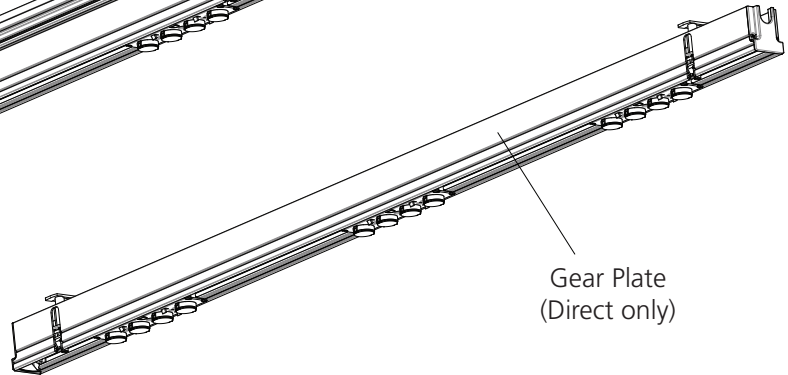
Attention: Read and understand these instructions before installing fixture. This fixture is intended for installation in accordance with National Electric Code and local regulation: To assure full compliance with local codes and regulations, check with your local electrical inspector before installation. This equipment is guaranteed only when used as indicated in these instructions; therefore they should be kept for future reference. To prevent electrical shock, turn off power supply before carrying out any connection or maintenance operations.

The following instructions allow you to install the gear plates on all algoritmo system configuration; your installation process may vary.

Gear Plate
(Direct/Indirect
Combination)

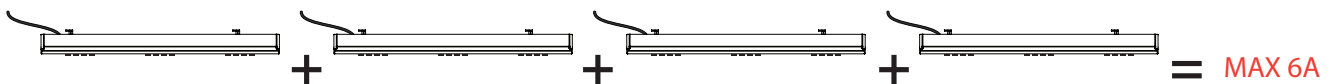


Gear Plate
(Direct only)



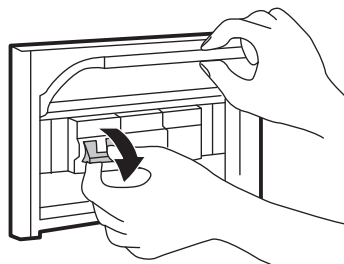
NOTE 1

The electrical feed is rated at 6A maximum, make sure the sum of gear plates on the same circuit does not exceed it. Consult the gear plate datasheets to find the values.



NOTE 2

The electrical wiring contained in the Gear plate is not capped; it is mandatory to disconnect the circuit to avoid electrical shock before making connections.

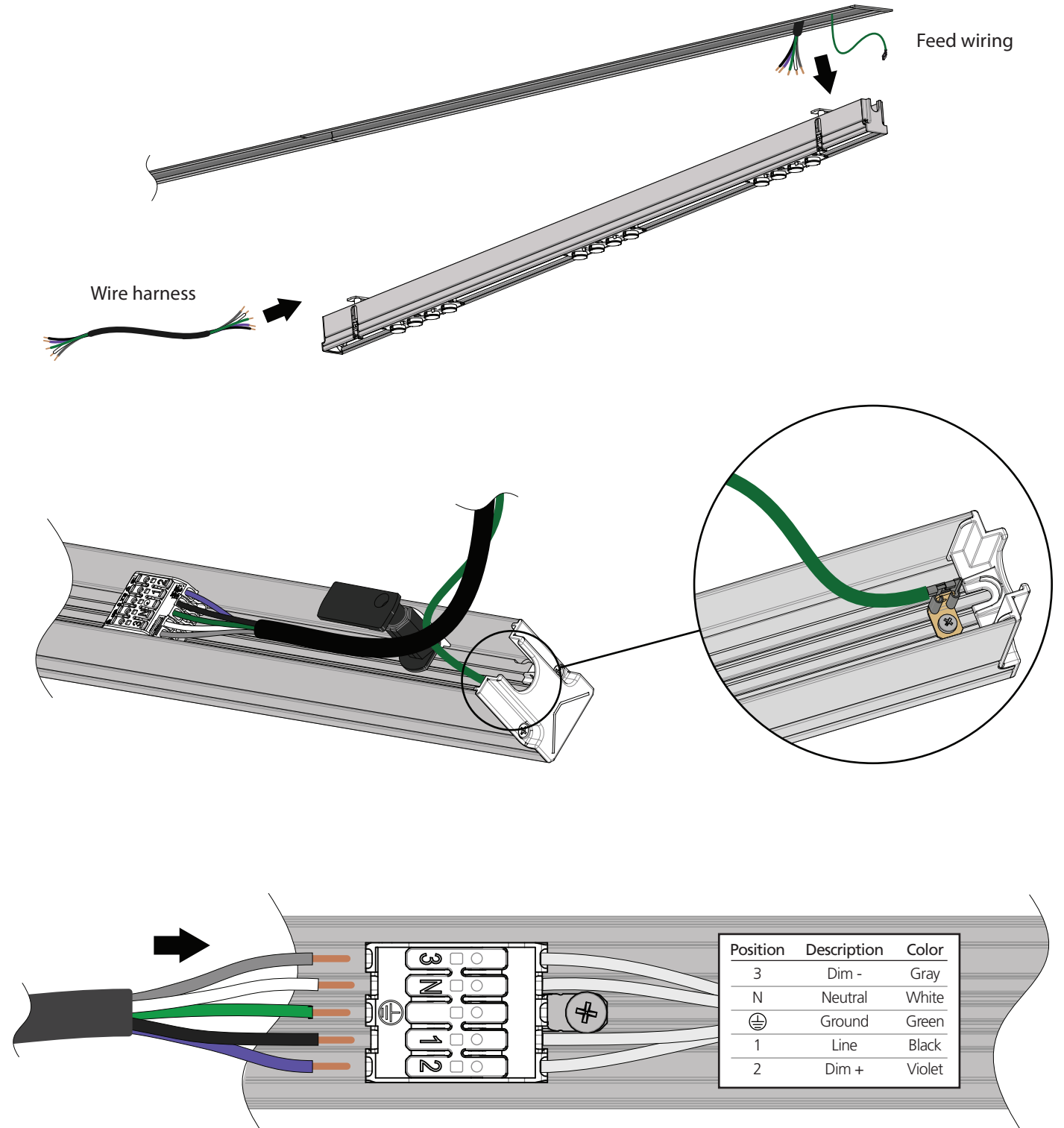




STEP 1

DIRECT GEAR PLATE INSTALLATION

Make the connections from the feed housing to the first gear plate, and connect the wire harness to the other end. Refer to the table below for connections.

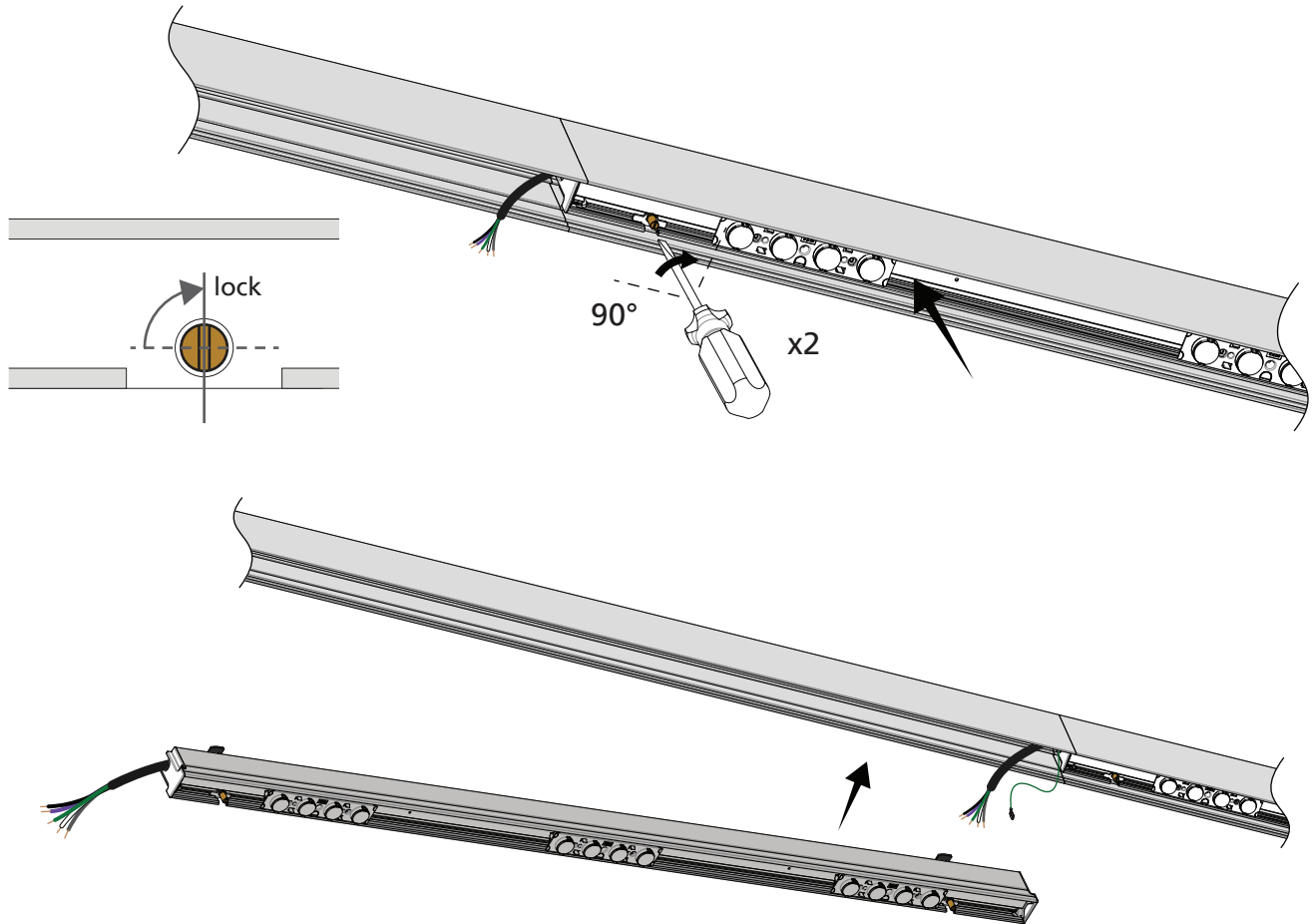




STEP 1 (cont.)

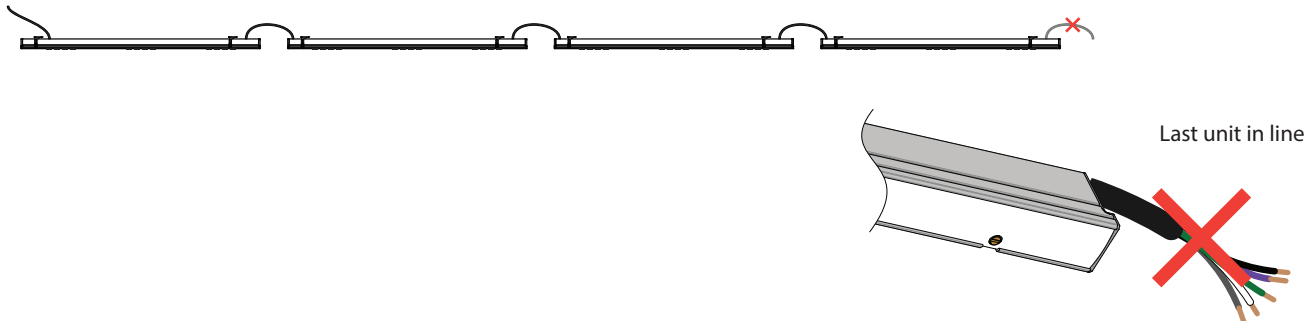
Lock in the gear plate by turning both brass screws perpendicular to it's length. Be careful to route the wiring carefully as the gear plate may not lock properly into place. DO NOT turn the pins by force as they will not lock. Continue wiring and locking in the remaining gear plates. The last gear plate will not need the wiring harness.

For Optics Installation, see Installation document Y503-12078.



NOTE 3

Do not connect a wire harness coming out of the last unit in the configuration to prevent short circuit and/or shock.





**STEP 2
(IF EQUIPPED)**

INDIRECT GEAR PLATE INSTALLATION

Insert and lock in the indirect gear plate by turning the brass screw perpendicular to it's length. **DO NOT** turn the pins by force as they will not lock. Plug in electrical connector coming out of body into the indirect gear plate.

NOTE : Indirect gear plate does not require any additional optics.

